

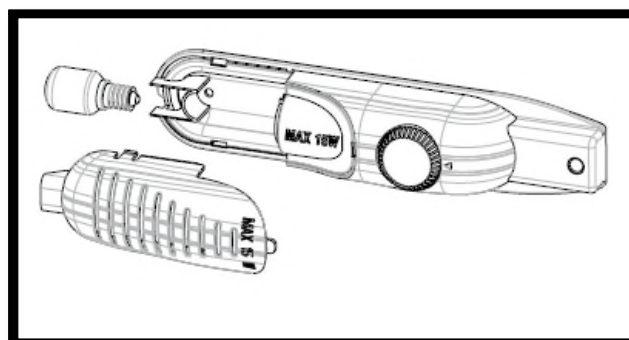
Thermostat Control

- Larders (coolers) have not any freezer compartment but can cool below 5°C.
- Thermostat automatically regulates the inside temperature of the refrigerator compartment. By rotating the knob from position 1. to 5., colder temperatures can be obtained.
- « • » position shows thermostat is closed and no cooling is available.
- For short-term storage of food in the freezer/refrigerator compartment, you can set the knob between minimum and medium position.(1-3)
- For long-term storage of food, you can set knob to medium position.(3-4)



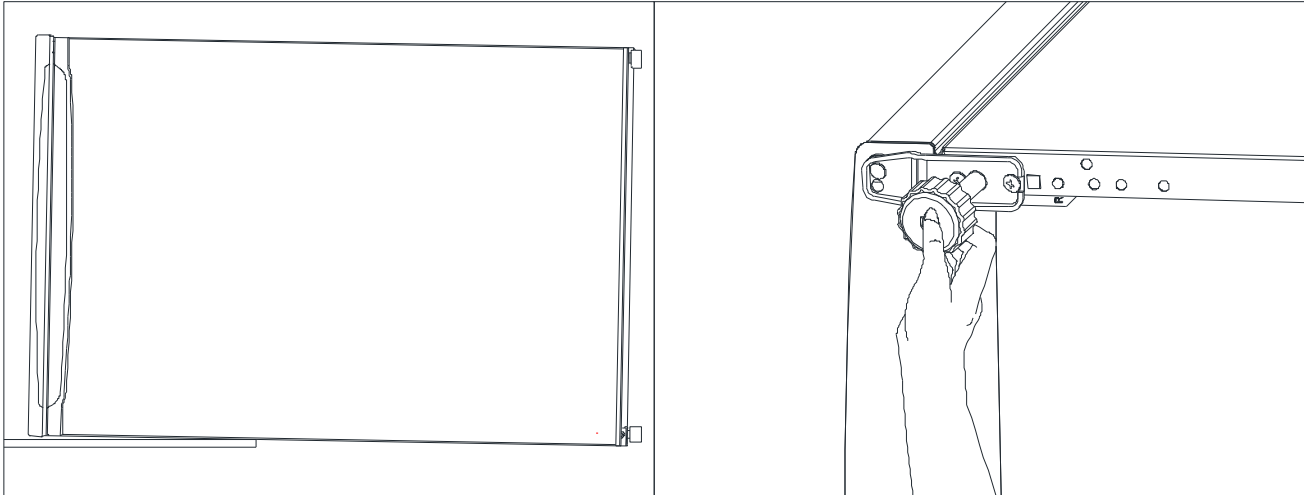
Replacement of Refrigerator Lamp (optional)

- 1- Unplug your fridge.
- 2- Remove the cover of the box from the claws using a screwdriver.
- 3- Replace with a bulb of maximum 15 Watts.
- 4- Install the cover.
- 5- Wait for 5 minutes before re-plugging and bring the thermostat to its original position.

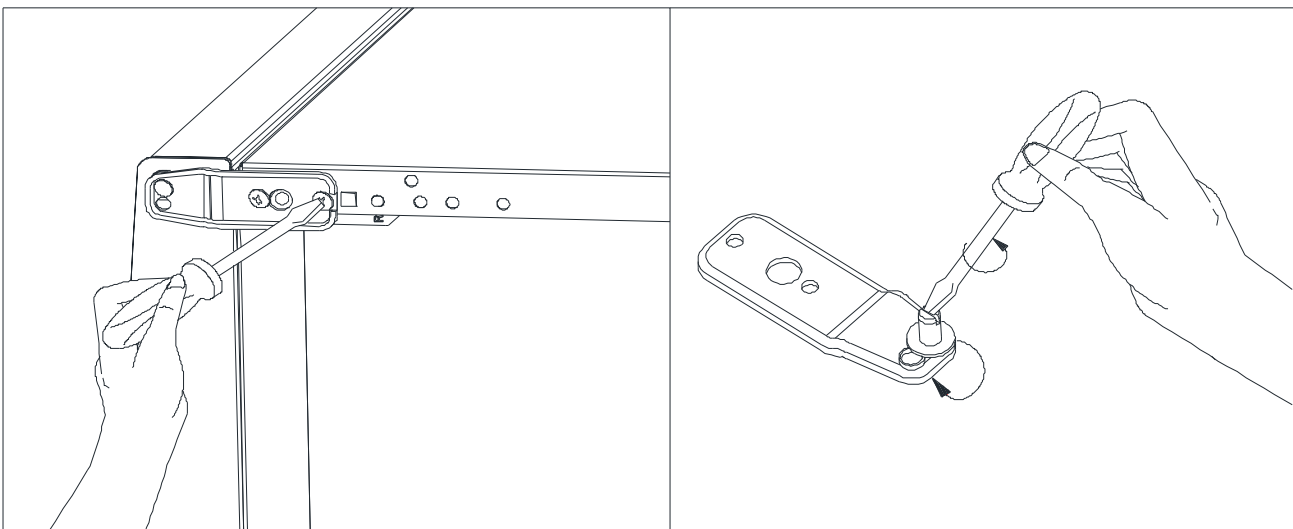


CHANGING THE DOORWAY DIRECTION

1. Lie down the appliance to the left side and dismantle both leveling foot.

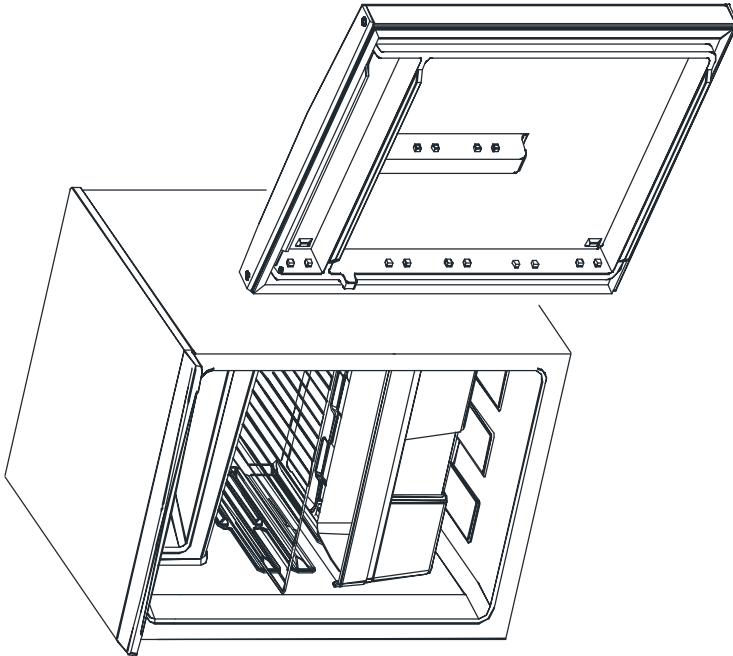


2. Unscrew the bottom hinge fixing screws and remove it. Unscrew the bottom hinge pin and screw in the next hole.

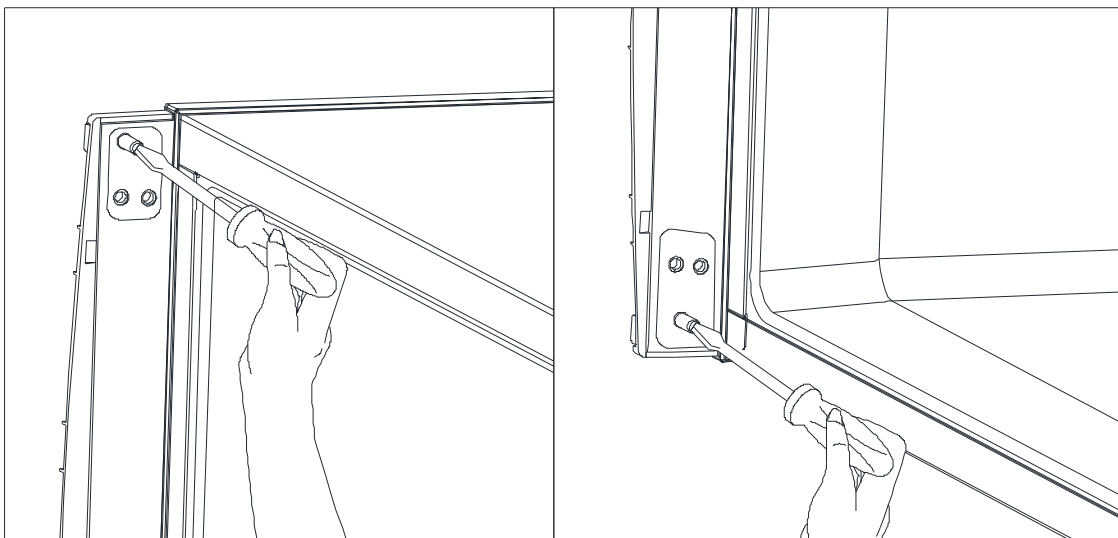


CHANGING THE DOORWAY DIRECTION

3. Remove the door.

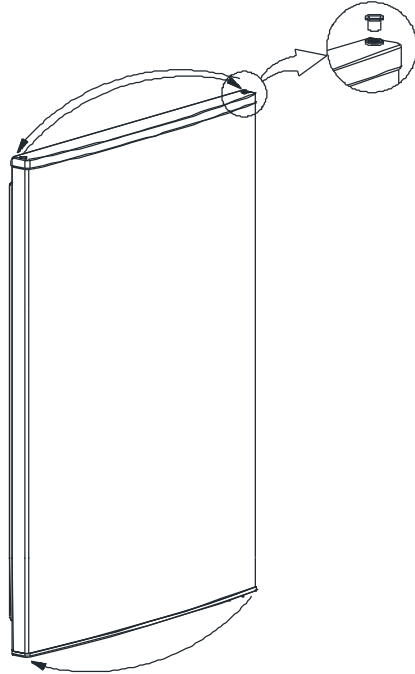


4. Unscrew the the top hinge and screw the hinge on the left hole of the top panel.



CHANGING THE DOORWAY DIRECTION

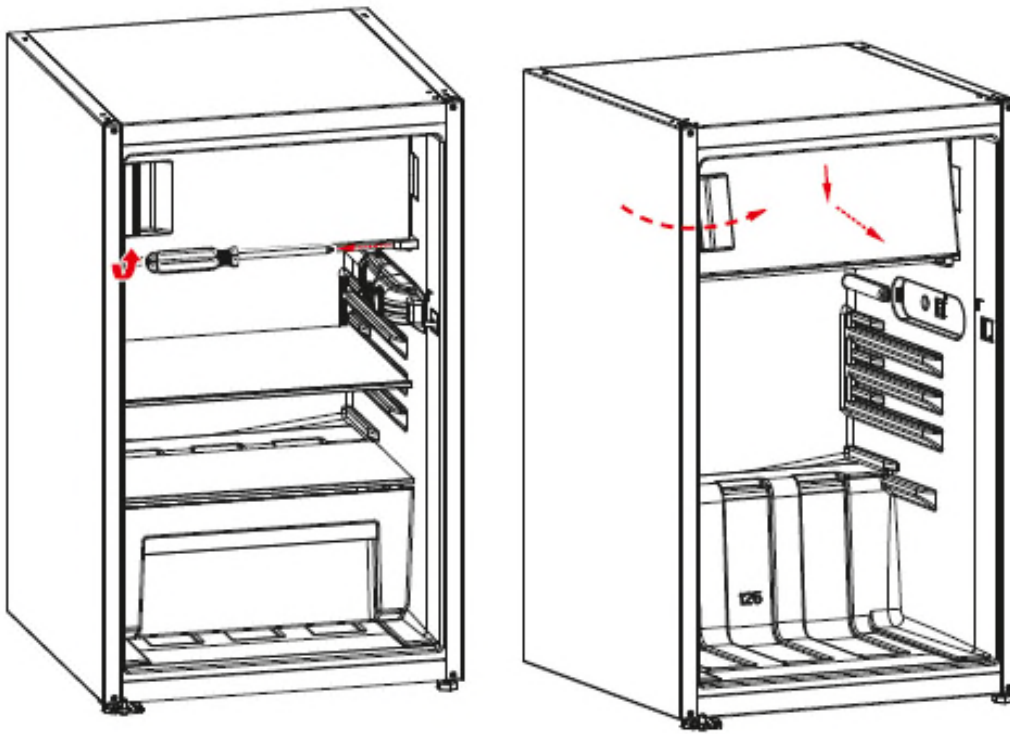
5. Replace the top bushing and top bushing cap.
Remove the bottom bushing and assemble it to the left side.



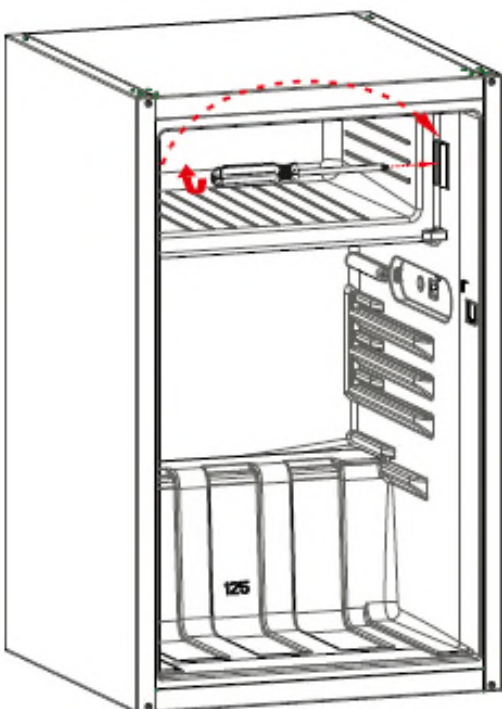
6. Assemble the door to the top hinge. (Reverse operation of item 3)
Screw the bottom hinge to the left side.
Finally, screw the leveling foot to right side.

Changing The Freezer Door Swing Direction

1. Unscrew the two screws fixing the freezer door hinge and remove the freezer door.

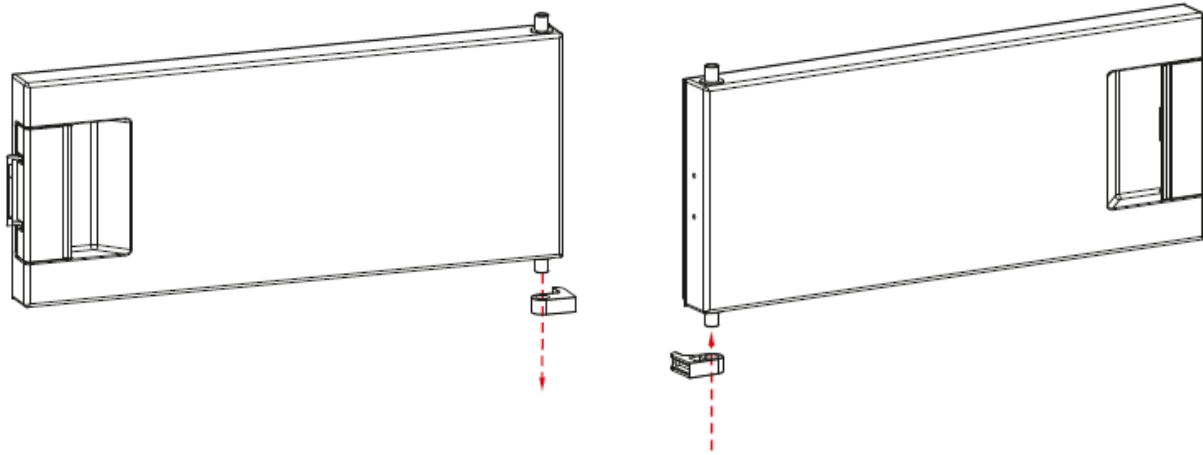


2. Unscrew the screw fixing the freezer door holder and remove it. Then screw it to the right side.

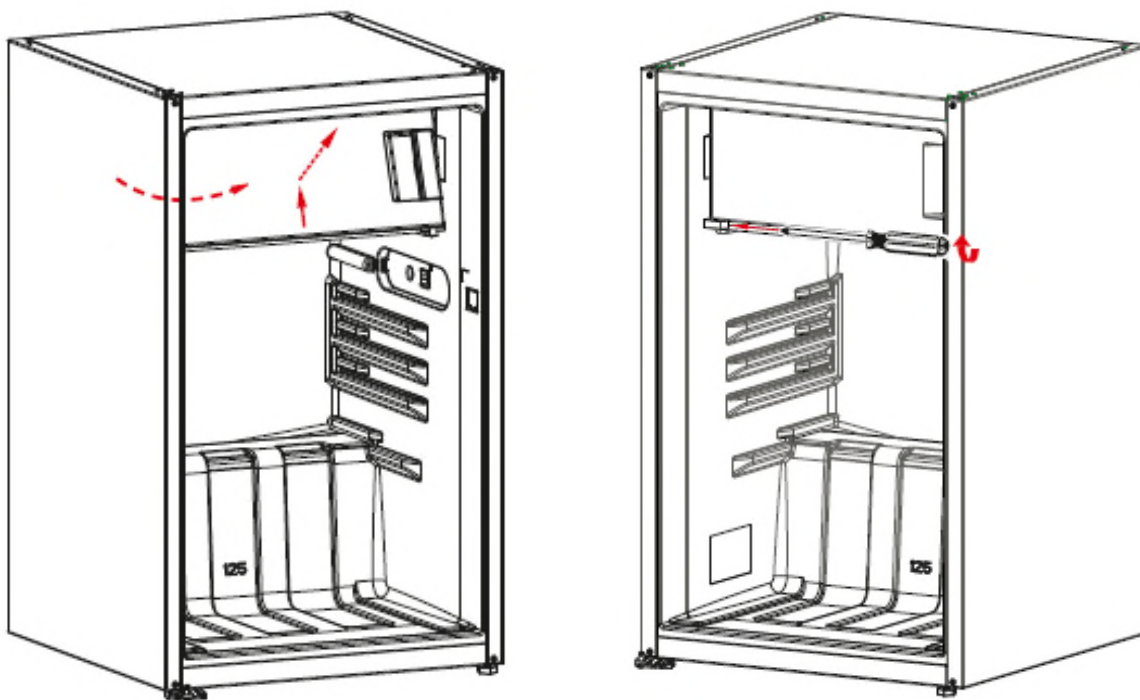


CHANGING THE DOORWAY DIRECTION

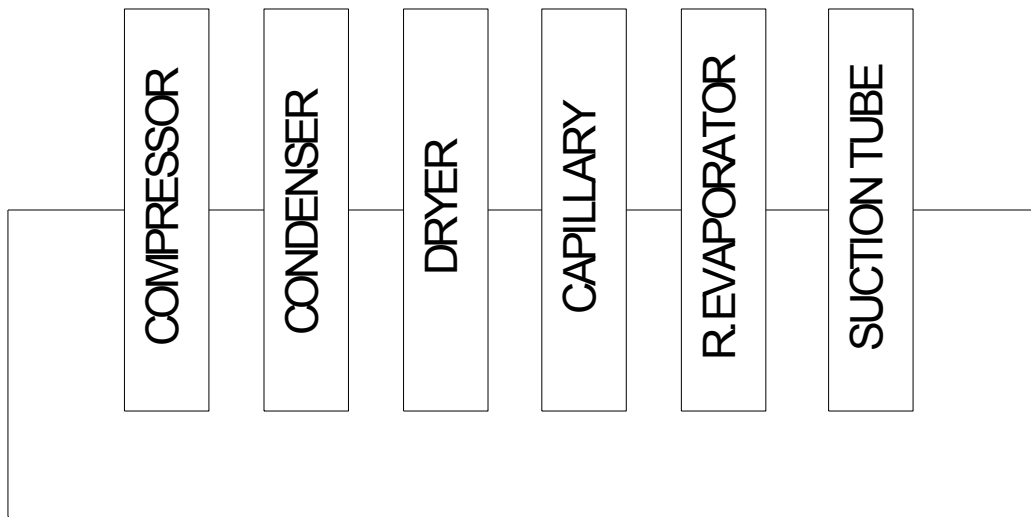
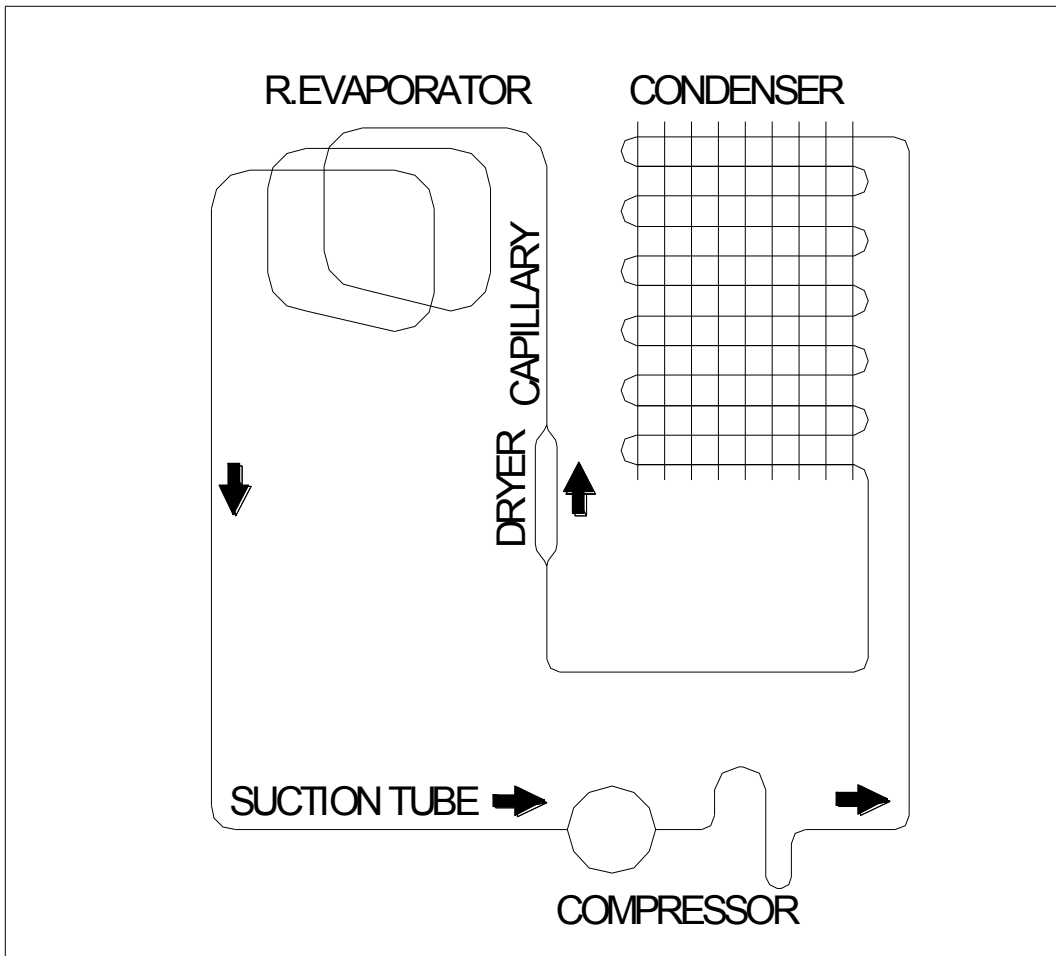
3. Remove the freezer door hinge and insert it to the left side.



4. Assemble the freezer door and fix the freezer door hinge by tightening the screws.



REFRIGERANT CYCLE DIAGRAM

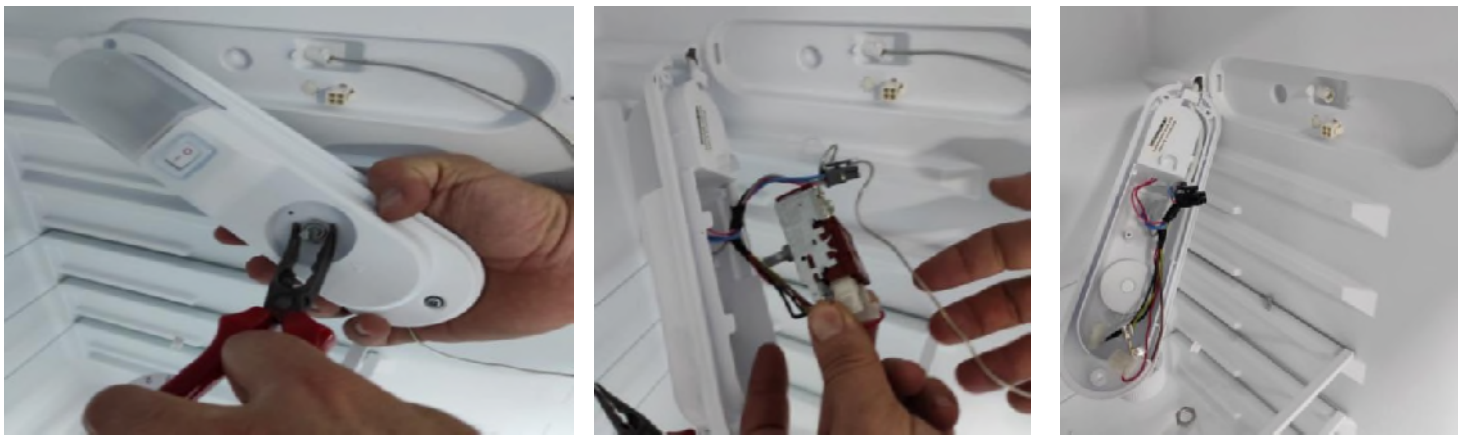


CAUTION: The plug must be pulled out before the mainboard group is removed.

Remove screw which is attached one side of the thermostat



Firstly take off the button and screw and then take off all cable connection and pull thermostat bulb out



Take off the lamp cover, cable connection and screw at below picture



REPLECAMENT OF THERMOSTAT

Firstly cut off the black band and change the thermostat



Place the thermostat, screws is tightened, insert the button
Connect cables as shown below



Send the thermostat bulb pipe throughout the hole until it end

Plug the black socket to the frige

Close the lamp cover ve screw is tightened which are attached one side of the thermostat.

REPLECAMENT OF DOOR GASKET (OPTIONAL)

Pull the gasket towards starting from top right corner
 Slowly pull the rest of the gasket.
 Completely remove the gasket from door.

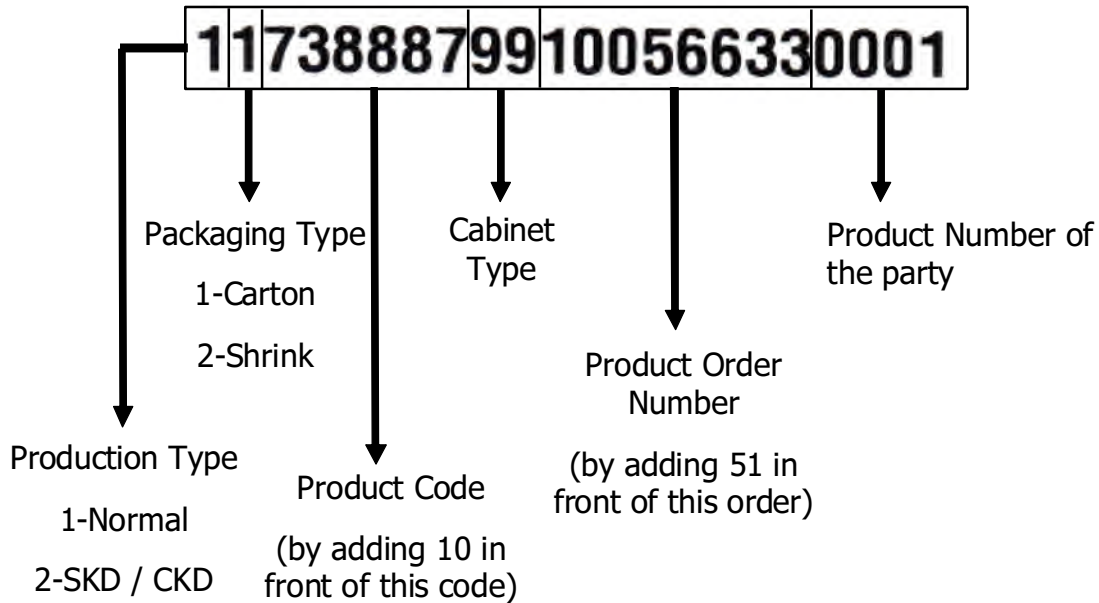
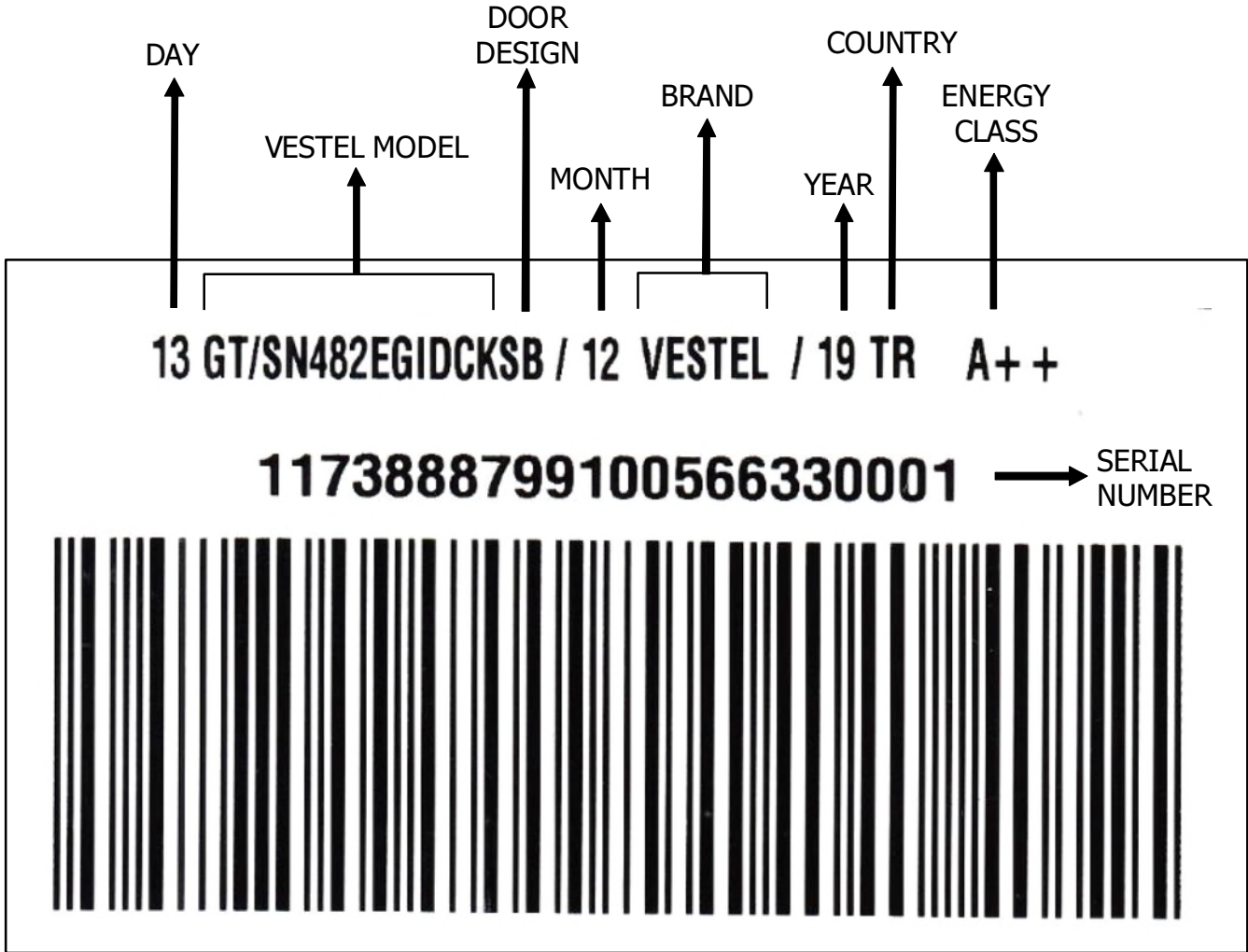


Check the replacement gasket form
 Starting with upper right corner , press on the gasket until it fits to its place..
 Place the other sides of the gasket with the help of your thumb



After the replacement check if there any non-fitting point on the gasket. Also check if there any opening at the gasket while the door is closed. If so that might cause condensation/icing or insufficient cooling/freezing. To prevent this soften the form of the gasket with the help of a hair dryer or hot water and make sure that all points are closing perfectly.

Vestel refrigerator serial numbers are consist of 22 digits.



Exp:10738887