

Lighting (If available)

When the product is plugged in for the first time, the interior lights may turn on 1 minute late due to opening tests.

Temperature Set Button

This button allows setting temperature of the fridge. In order to set values for fridge partition, press this button.

Temperature Settings

- Every time you press the button, the setting temperature will decrease.
- Settings display and you do not press any button within the following 3 seconds.

Super Freeze Mode

When would it be used?

- To freeze huge quantities of food.
- To freeze fast food.
- To freeze food quickly.
- To store seasonal food for a long time.

If refrigerator is cooler

Super Cooling Mode

When would it be used?

- To cooling huge quantities of food.
- To cooling fast food.
- To cooling food quickly.
- To store seasonal food for a long time.

How to use?

- Hold down temperature set button for 5 seconds to activate super mode when set is MAX.
- All lights will be lighted constantly.

During this mode:

If you hold down set button for 5 seconds, super mode will be deactivated. The super mode will be cancel automatically after max 48 hours.



2460 - ELID



Display and Control Panel

Door Open Alarm Function

If cooler door is opened more than 2 minutes, appliance will give sound warning.

Stand-By Mode

Select min set value

Press the set button for 5 seconds.

All components will be off.(include lighting)

When mode activated, all leds will blink three times and turn off.

If the mode is active when the set key is pressed for less than 5 seconds, all leds will blink 3 times.

For cancel this mode, press the set button for 5 seconds.

Demo Mode

This mode can be used to show functions & modes to customer or end-user without operating cooling components such as a compressor, fan etc.

While in the mode, you can do all the operations on the display as if the product is working. This includes all temperature settings and entry-exit operations for special modes such as holiday and economy mode. Interior lighting will continue to function in normal operation. Parts that provide only cooling functions will not operate.

Entering Demo mode:

Plug the product in.

First select the "4" set value, after that push set button 5 seconds.

Procedure must be completed within first 1 minute

All components will be off except interior lighting and set value leds.

Set leds will light sequentially every 1 seconds.

Example; set_1 led light, after 1 second set_1 led light off set_2 led light on...

When appliance is in Demo mode; if plug is removed or there is an electricity breakdown; demo mode will continue with current settings after user plug into or electricity breakdown finish.

Canceling Demo mode:

Push set button 5 seconds.

There is no automatic exit for demo mode.

A- Changing The Door Swing Direction to Right Hand

1- Unscrew the two screws fixing the top hinge (Fig-1) and remove the freezer door. (Fig-2)



Figure 1



Figure 2

2- Uncrew the two screws fixing the middle hinge (Fig-3) and remove the refrigerator door. (Fig-4)



Figure 3



Figure 4

3- Remove the bottom hinge pin (Fig-5) and insert it to the left side foot. (Fig-6)



Figure 5



Figure 6

5- Assemble the refrigerator door. (Fig-7) Rotate the middle hinge by 180° and screw it to the left side. (Fig-8)



Figure 7



Figure 8

6- Remove the top hinge screw caps (big) on the left side (Fig-9) and insert them to the right side. (Fig-10) (You can find the new caps in the user manual bag)



Figure 9



Figure 10

7- Unscrew the pin of the hinge from Hole 1, rotate the top hinge by 180° and screw the pin to Hole 2. (Fig-12)



Figure 11

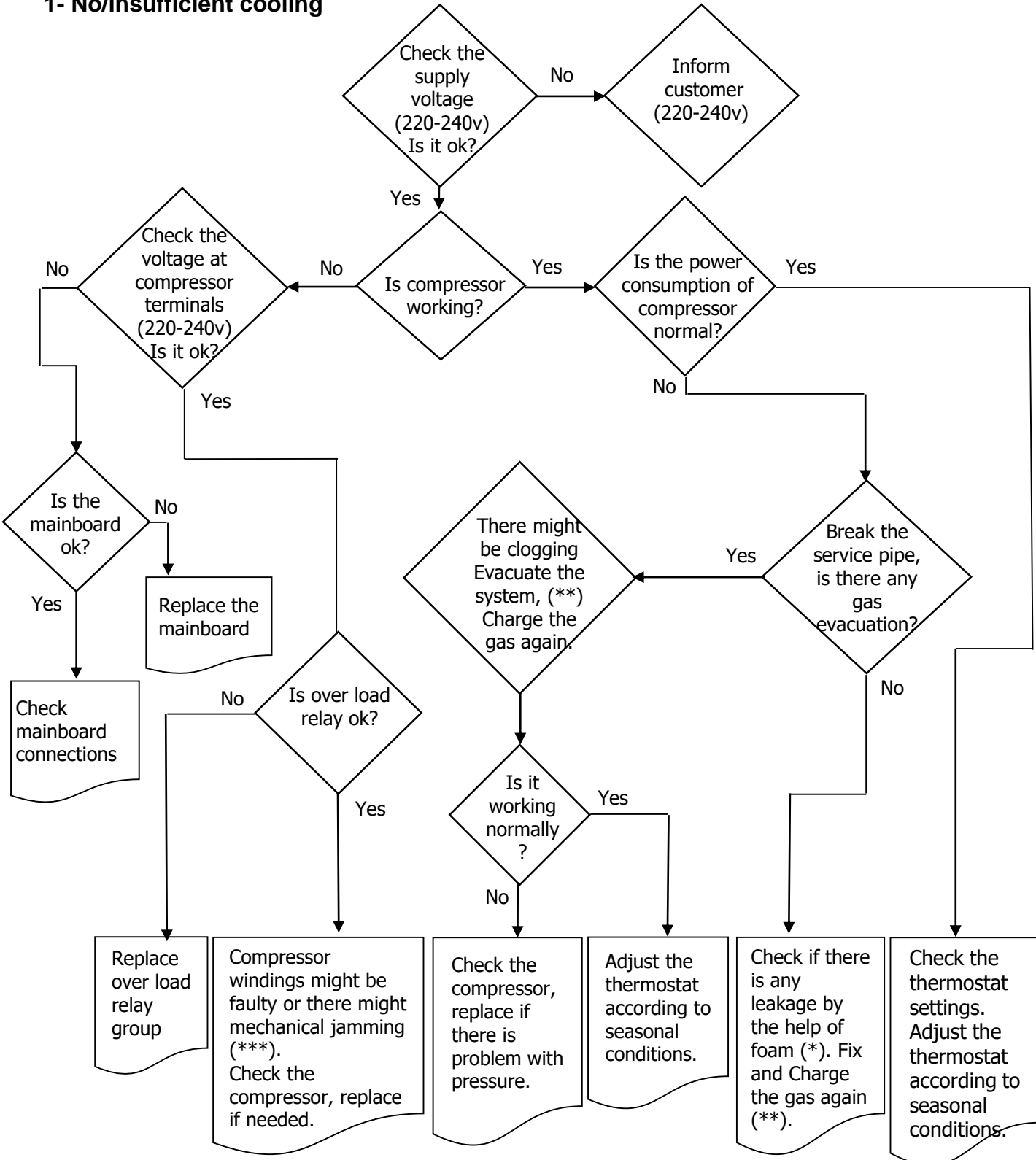
8- Assemble the freezer door and screw the top hinge to the left side. (Fig-12)



Figure 12

TROUBLE-SHOOTING CHART

1- No/Insufficient cooling



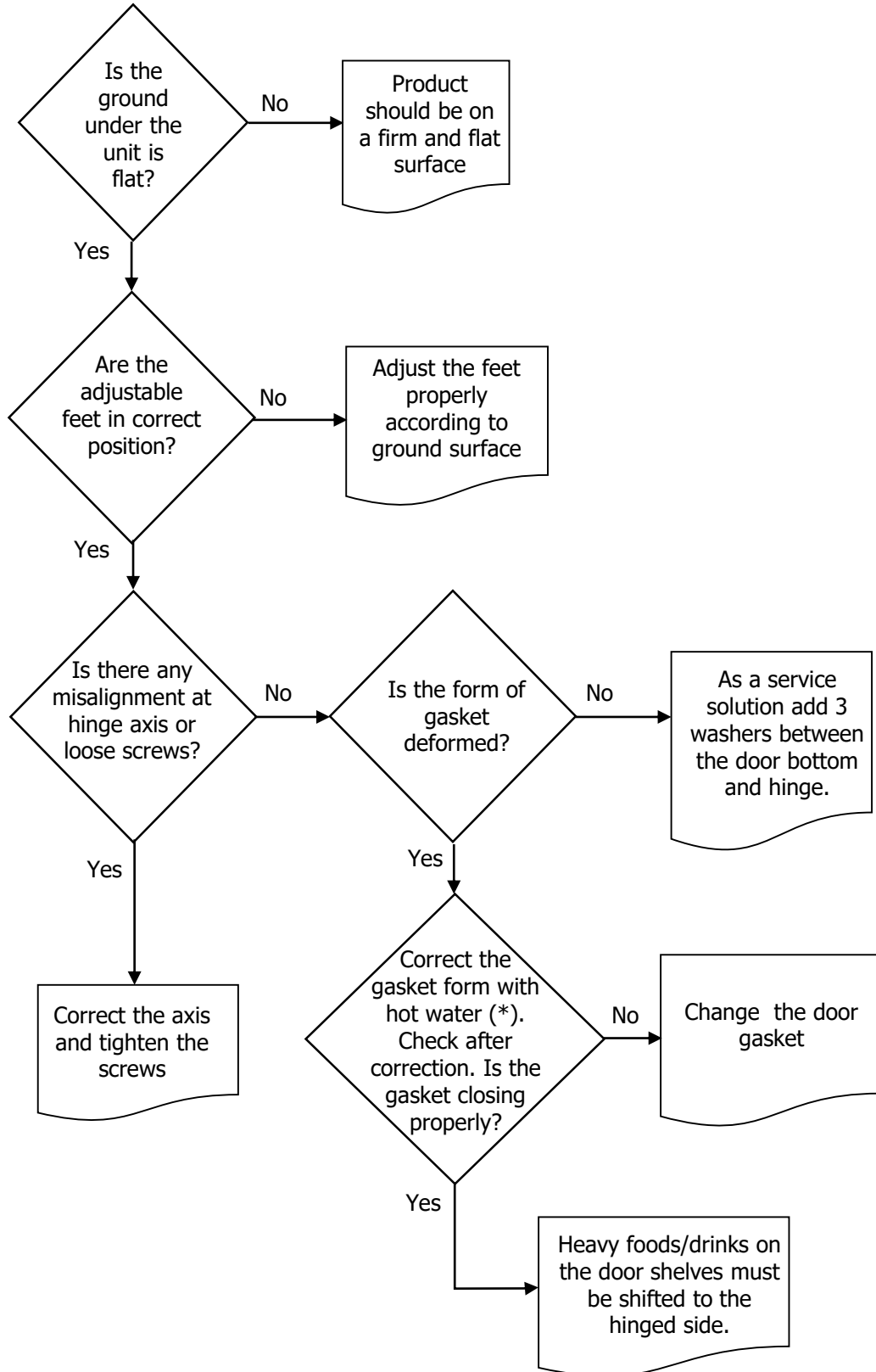
(*) Check all pipes, tubes and welding points against gas leakage.

(**) Before charging gas to system, change dryer and vacuum at least 30 minutes, then charge the system with amount written on label

(***) Compressor primary winding should be around 10 Ω and secondary around 15 Ω (at 25°C ambience temp.)

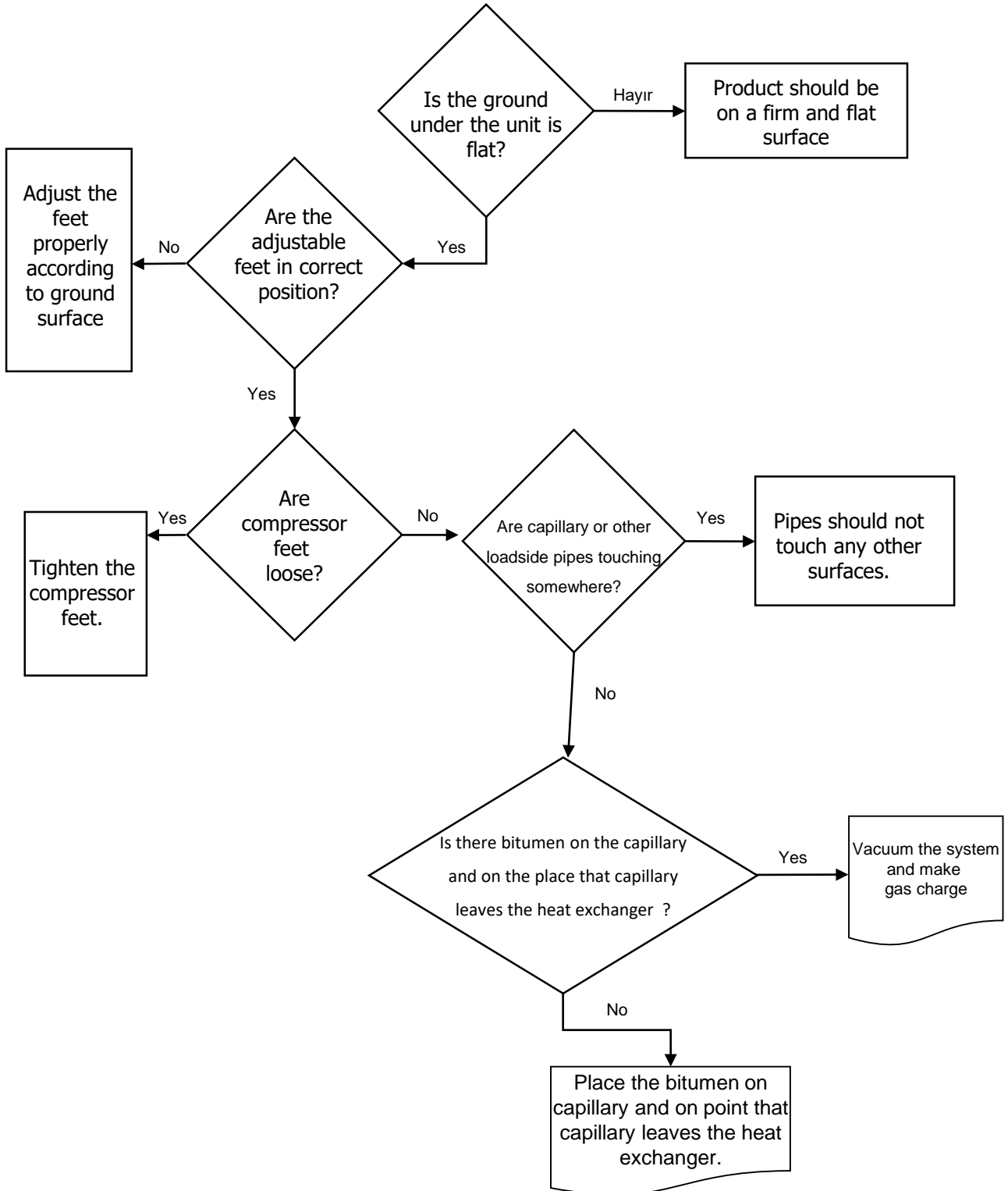
TROUBLE-SHOOTING CHART

3- Door/Gasket Adjustment



(*) Correct the gasket form by the help of hot water and hair dryer.

4- Abnormal noise



Removing/Assembling The Door Switch

1. Stick a tape to protect the body plastic. Flex it with the help of a tool like a slotted screwdriver. (Pic-1)



Picture-1

2. Also flex the top-side of the switch and then displace by pulling. (Pic-2)



Picture-2

3. Put the switch connector cable in the housing. First place the top-side of the switch and then push the bottom side.(Pic-3.1/Pic-3.2)



Picture-3.1

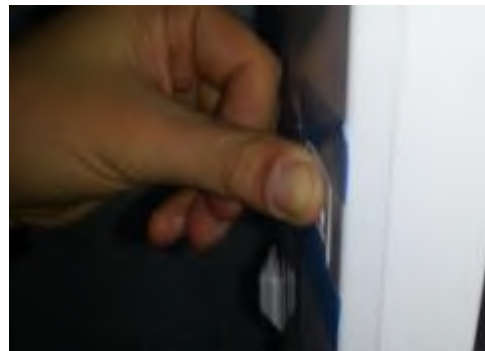


Picture-3.2

4. After the switch is placed, complete the assembly by pushing. (Pic-4)



Picture-4.1



Picture-4.2

CAUTION: The bottom-top details of the switch are different from each other to avoid assembling wrong!

Removing The Thermostat Box Gr

Unscrew the screw fixing the thermostat box.



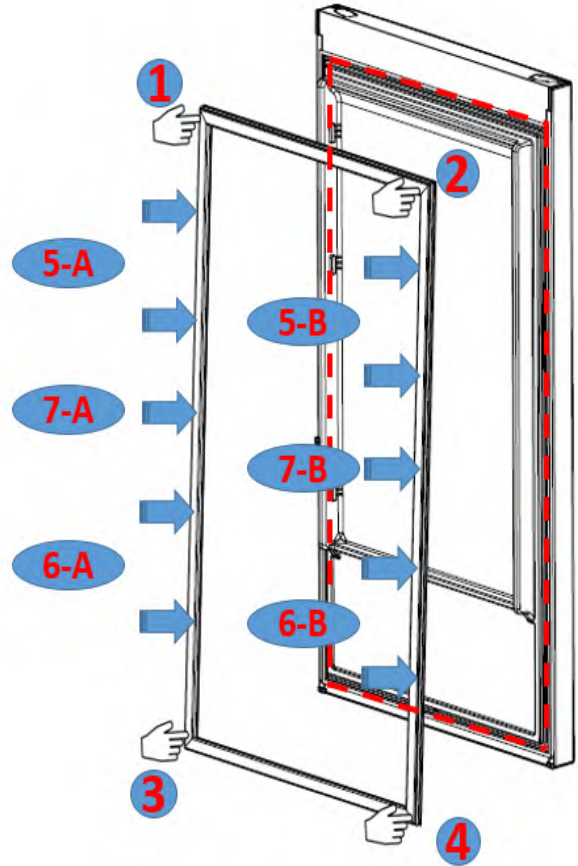
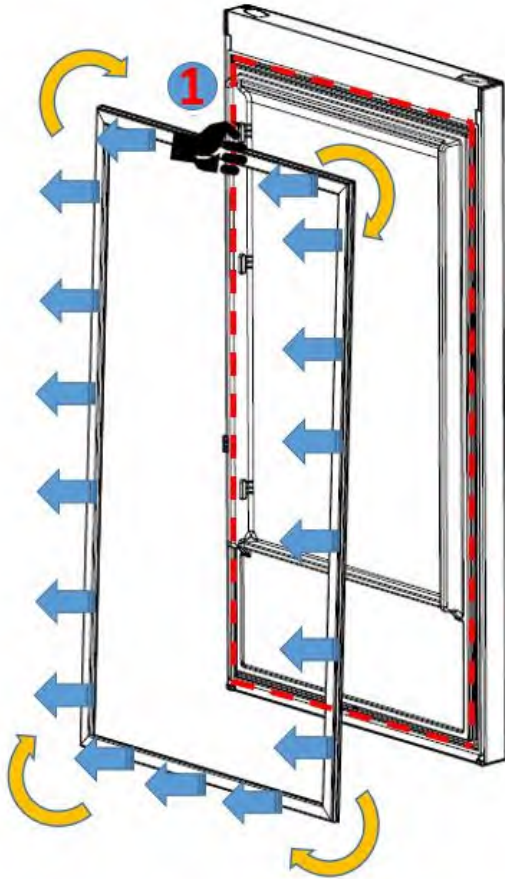
Disconnect the connector after removing it.



Removing- Assembling The Door Gasket

Pull the gasket towards starting middle of the top edge as shown. Slowly pull towards left and right corner. Then continue through frame until the gasket will completely removebe removed from door.

Check the replacement gasket form. Starting with upper left corner, press on the gasket until it fits to its place.. Place the other sides of the gasket with the help of your thumb as the sequence shown on picture.



After the replacement check if there any non-fitting point on the gasket. Also check if there any opening at the gasket while the door is closed. If so that might cause condensation/icing or insufficient cooling/freezing. To prevent this soften the form of the gasket with the help of a hair dryer or hot water and make sure that all points are closing perfectly.

Barcode and Serial Number Explanation:

Vestel refrigerator serial numbers are consist of 22 digits.

