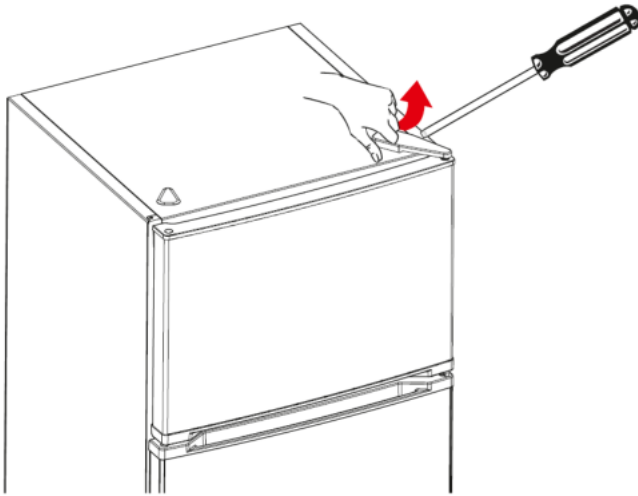
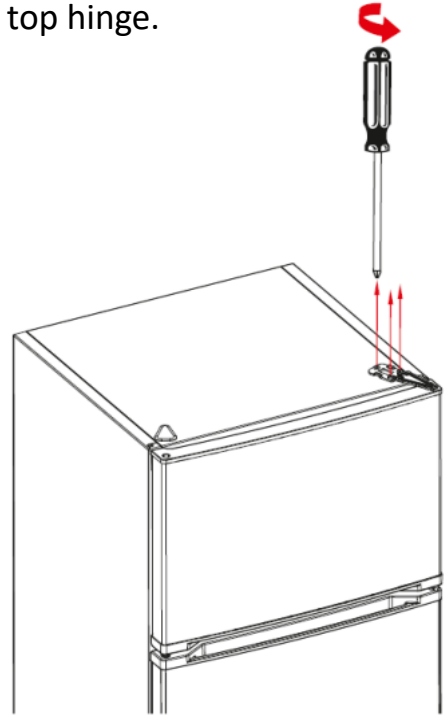


Changing The Door Swing Direction to Right Hand

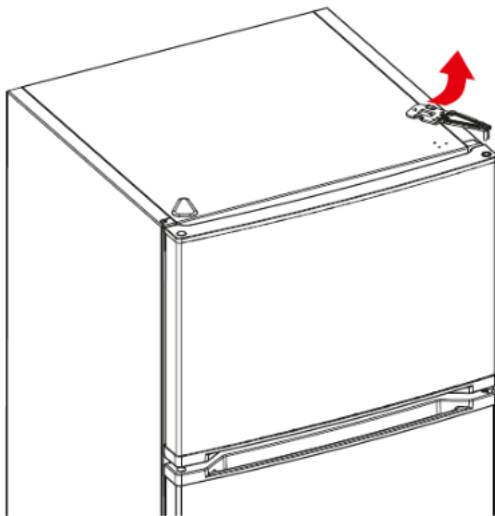
Hold the top hinge cover and remove it toward that direction.



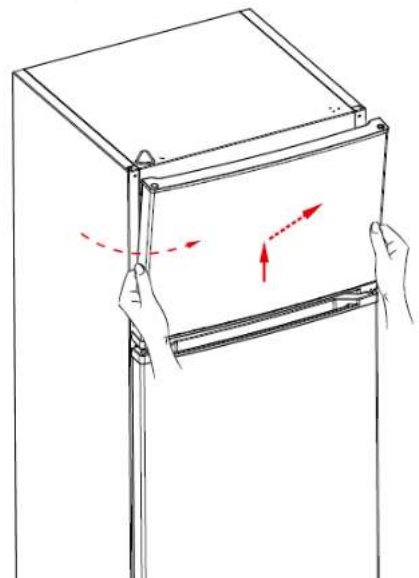
Unscrew the screws fixing the top hinge.



Remove the top hinge.

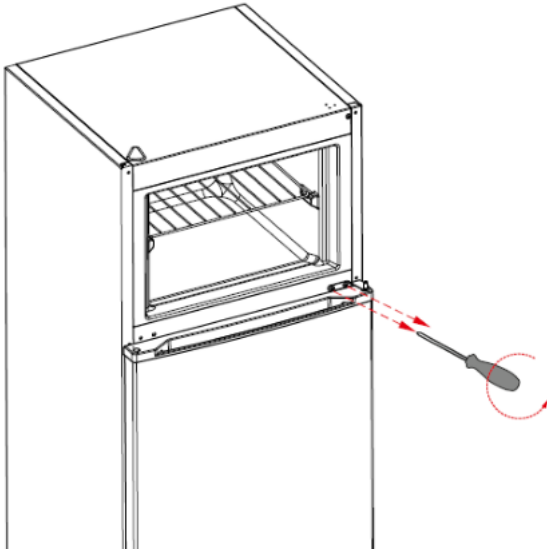


Displace the top door

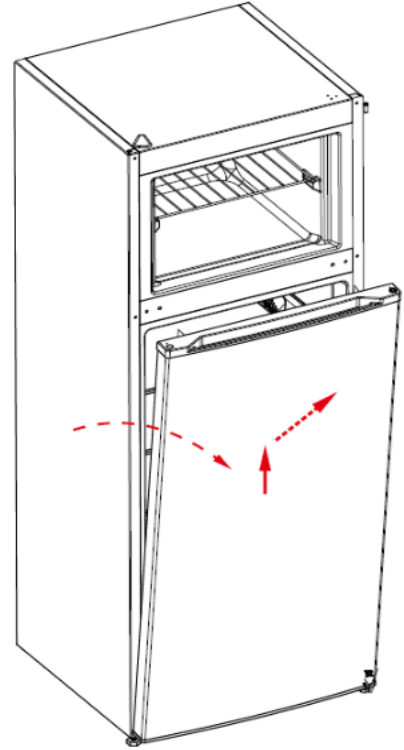


	233-263-283 (NEW DESIGN)	
	ASSEMBLE & DISASSEMBLE	

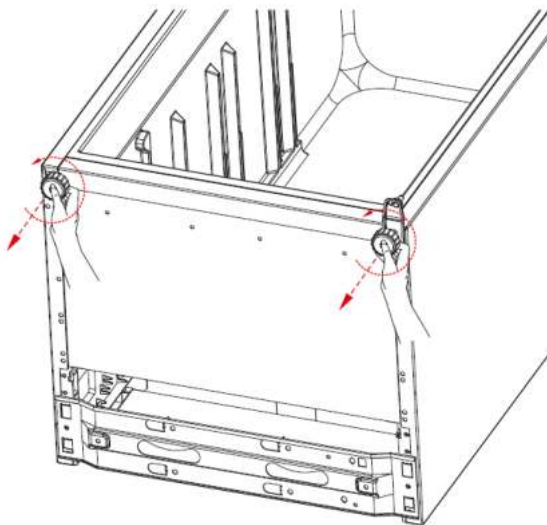
Unscrew the two screws fixing the middle hinge and remove it.



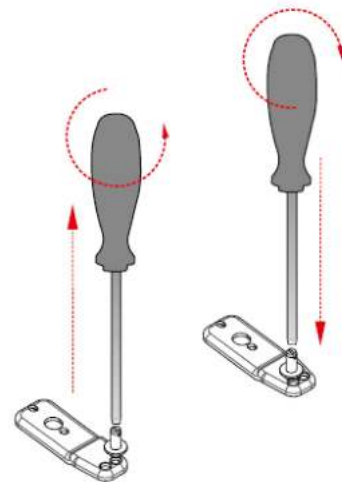
Displace the bottom door.



Dismantle both leveling feet and unscrew the bottom hinge fixing screws and remove it.

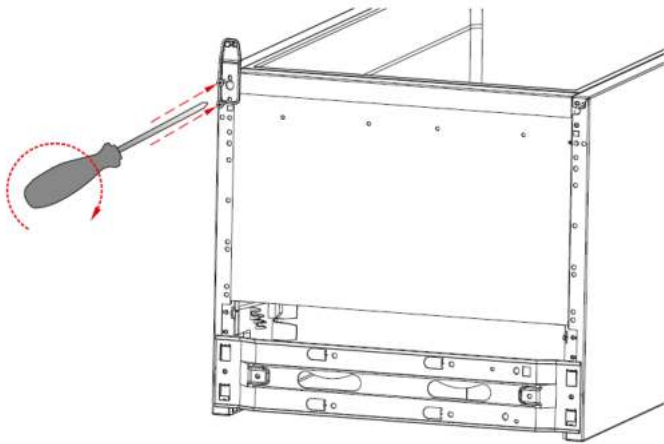


Unscrew the bottom hinge pin and screw in the next hole.

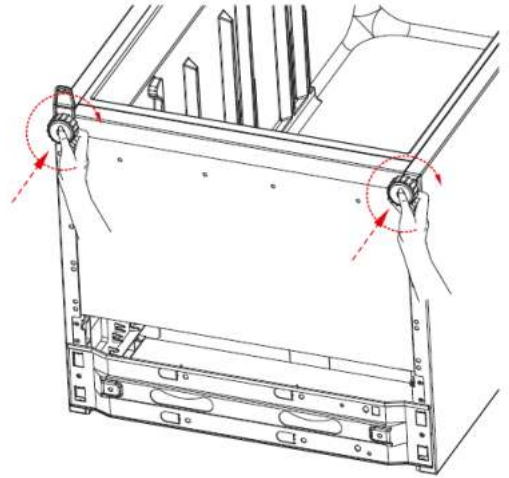


	233-263-283 (NEW DESIGN)	
	ASSEMBLE & DISASSEMBLE	

Then screw the hinge to left side of the refrigerator



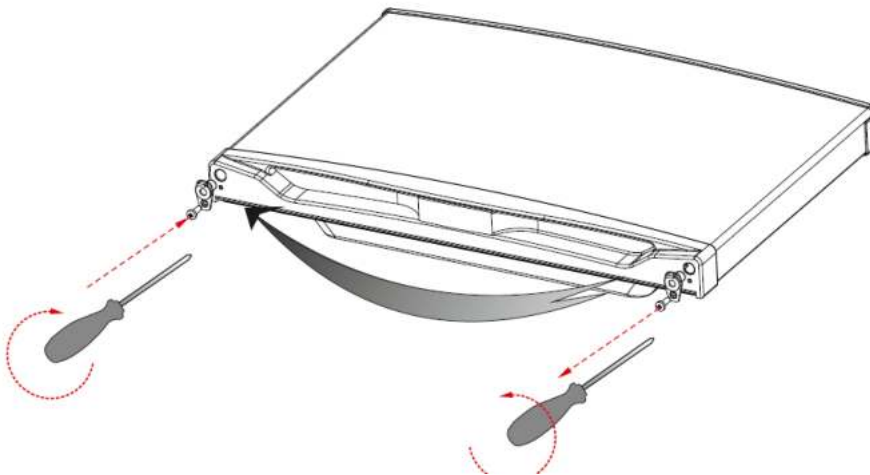
Screw the both leveling feet



Remove the stopper and bushing under the upper door.

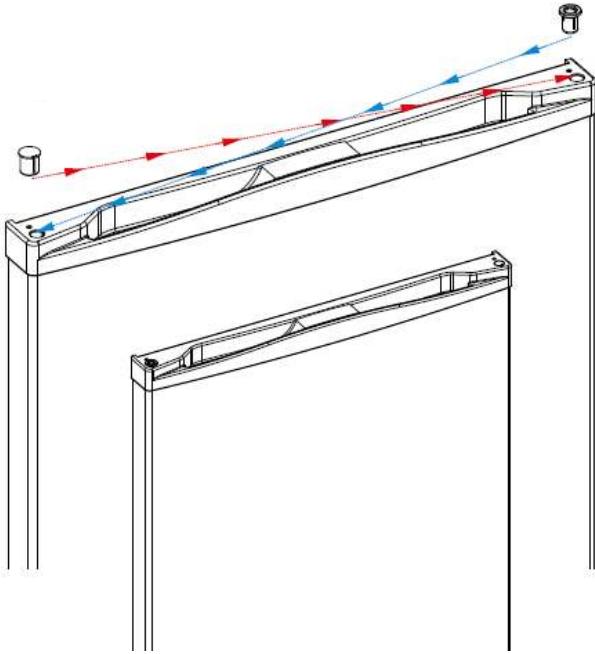
Then re screw these parts to the other side symmetrically.

(remember the screw for the stopper be screwed to the hole which is closer to the bushing). Do not use cordless screwdriver for these screws.

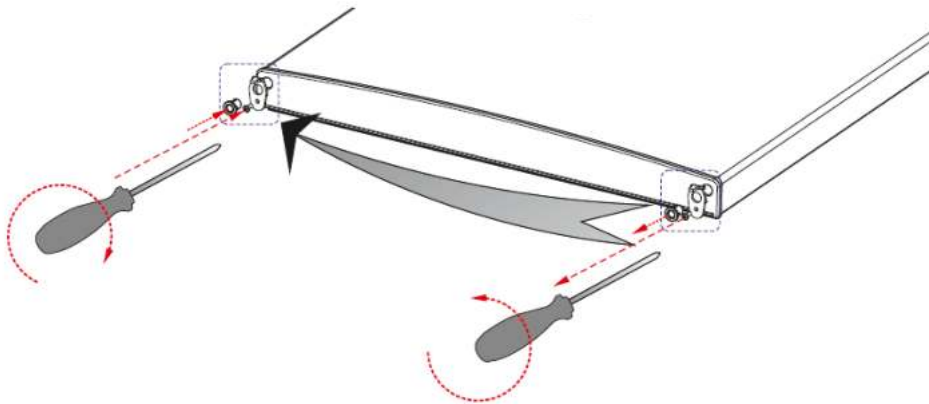


	233-263-283 (NEW DESIGN)	
	ASSEMBLE & DISASSEMBLE	

Replace the top bushing and the top bushing cap at the bottom door.

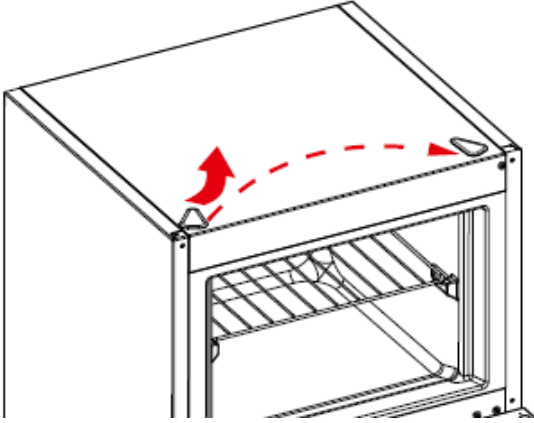


Unscrew the screws fixing stopper and bushing under the bottom door.
After that screw the other side.

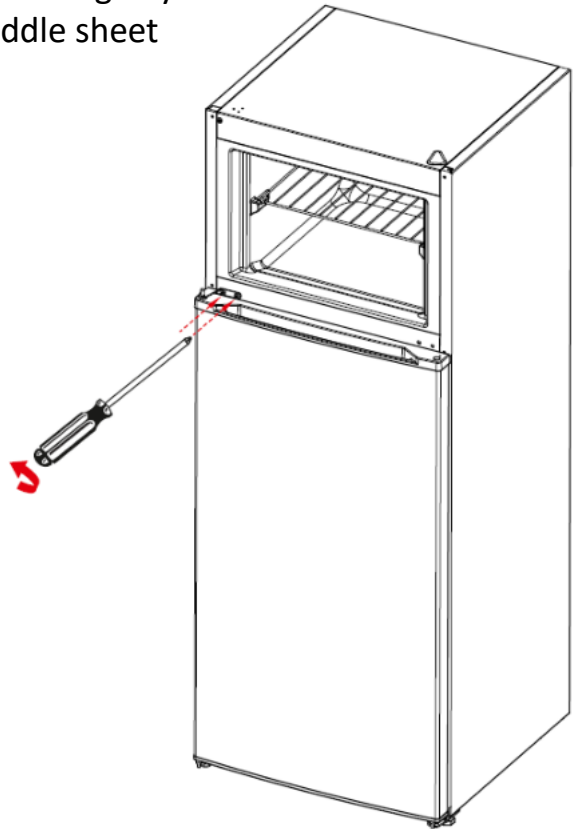


	233-263-283 (NEW DESIGN)	
	ASSEMBLE & DISASSEMBLE	

Replace the top hinge cover and hinge cap.

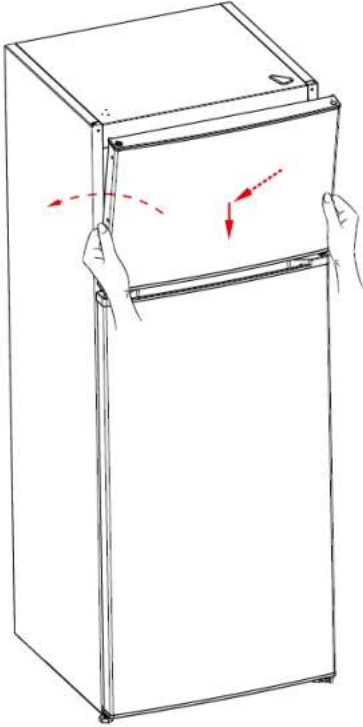


Place the bottom door and rotate the middle hinge by 180°.
After that, Screw to the right side on the middle sheet

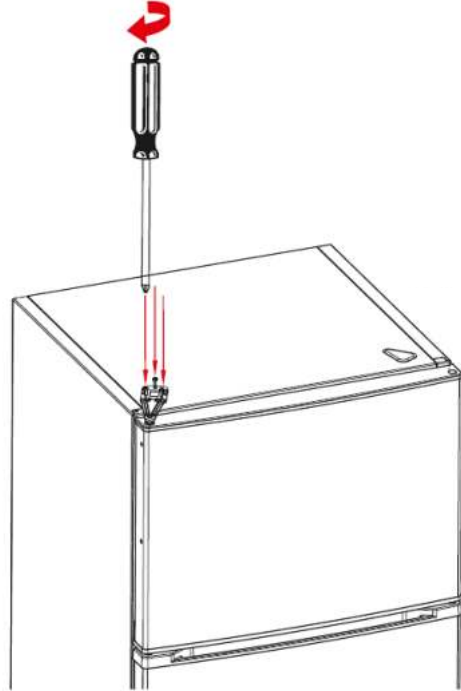


	233-263-283 (NEW DESIGN)	
	ASSEMBLE & DISASSEMBLE	

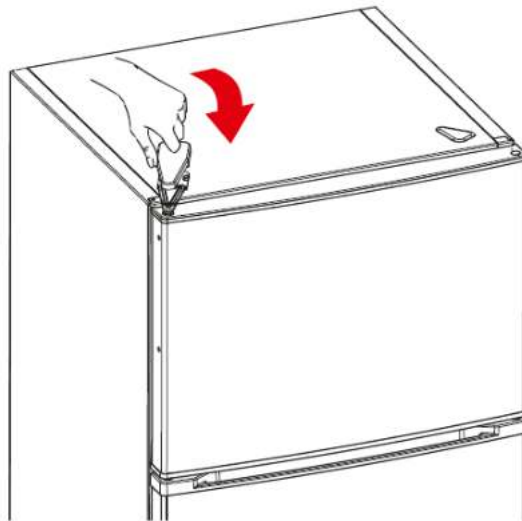
Place the top door to the middle hinge.



Screw the top hinge to the top panel.



Place the top hinge cover.



	233-263-283 (NEW DESIGN)	
	THERMOSTAT SETTING	

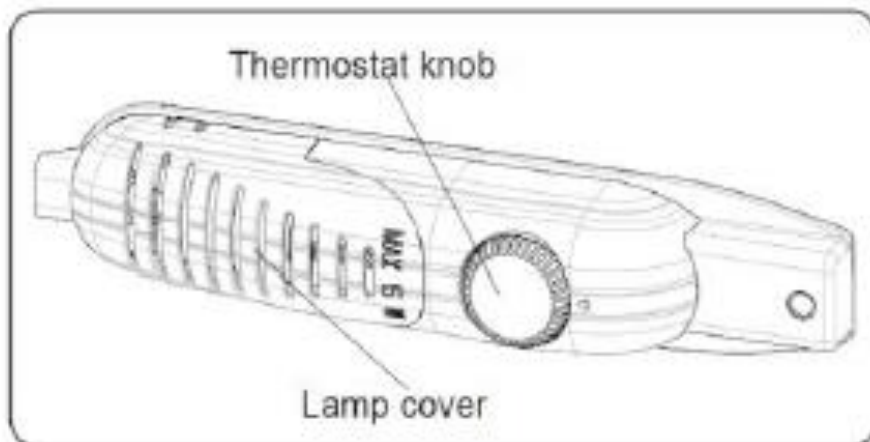
Your unit has only one control for regulating the temperature in the compartment. The temperature control is located on the upper right hand side of the compartment. The first time you turn the unit on, set the temperature control to "5". The range of the temperature control is from position "1" to "5". After 24 to 48 hours, adjust the temperature control to the setting that best suits your needs. The setting of "3" should be appropriate for home or office use.

NOTE:

If the unit is unplugged, has lost power, or is turned off, you must wait 3 to 5 minutes before restarting the unit. If you attempt to restart before this time delay, the unit will not start.

Interior Light

When you open the door, the light will be ON automatically. When you close the door, the light will turn OFF automatically.



	233-263-283 (NEW DESIGN)	
	REPLECAMENT OF DOOR GASKET	

Pull the gasket towards starting from top right corner
Slowly pull the rest of the gasket.
Completely remove the gasket from door.



Check the replacement gasket form

Starting with upper right corner , press on the gasket until it fits to its place..
Place the other sides of the gasket with the help of your thumb

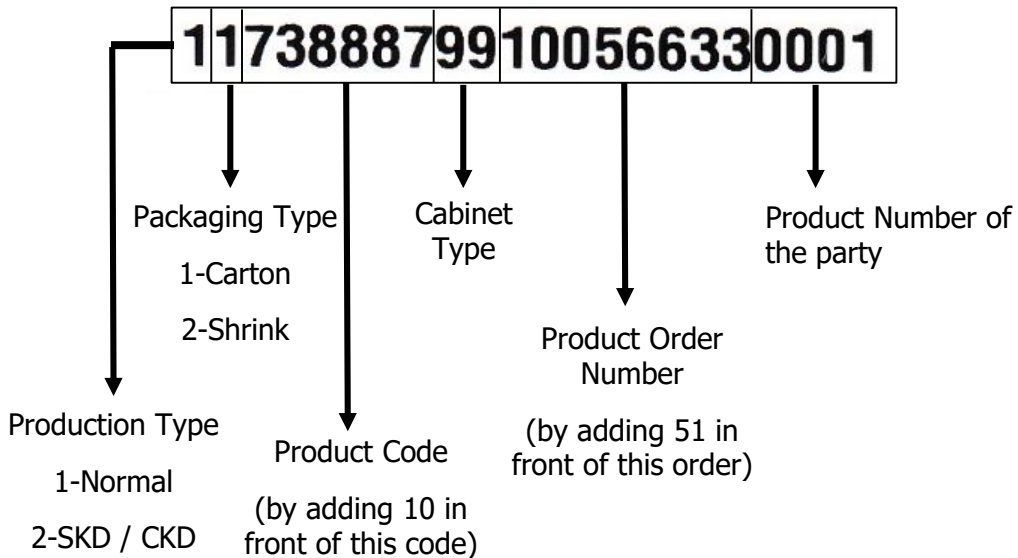
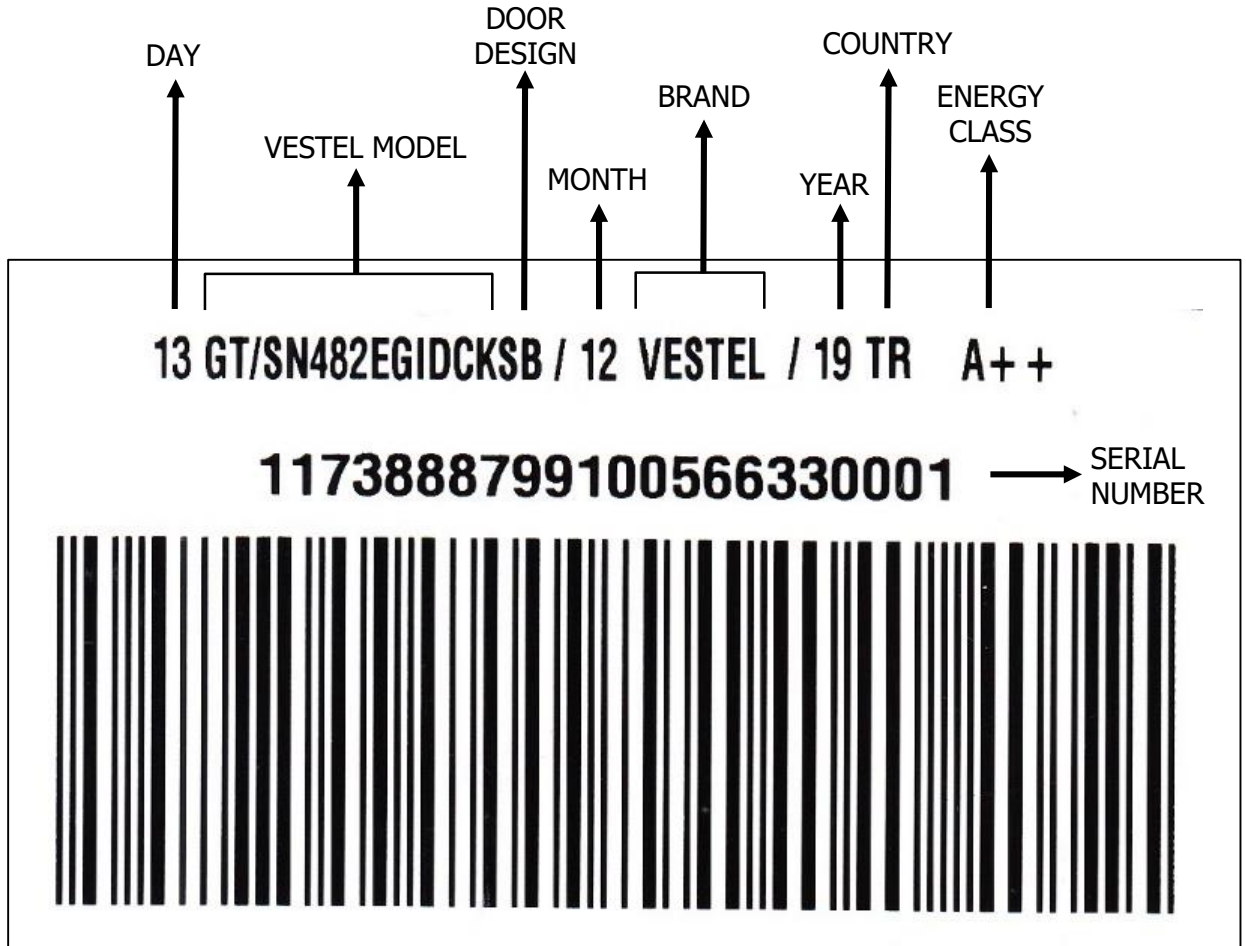


After the replacement check if there any non-fitting point on the gasket. Also check if there any opening at the gasket while the door is closed. If so that might cause condensation/icing or insufficient cooling/freezing. To prevent this soften the form of the gasket with the help of a hair dryer or hot water and make sure that all points are closing perfectly.

233-263-283 (NEW DESIGN)

Barcode and Serial Number Explanation:

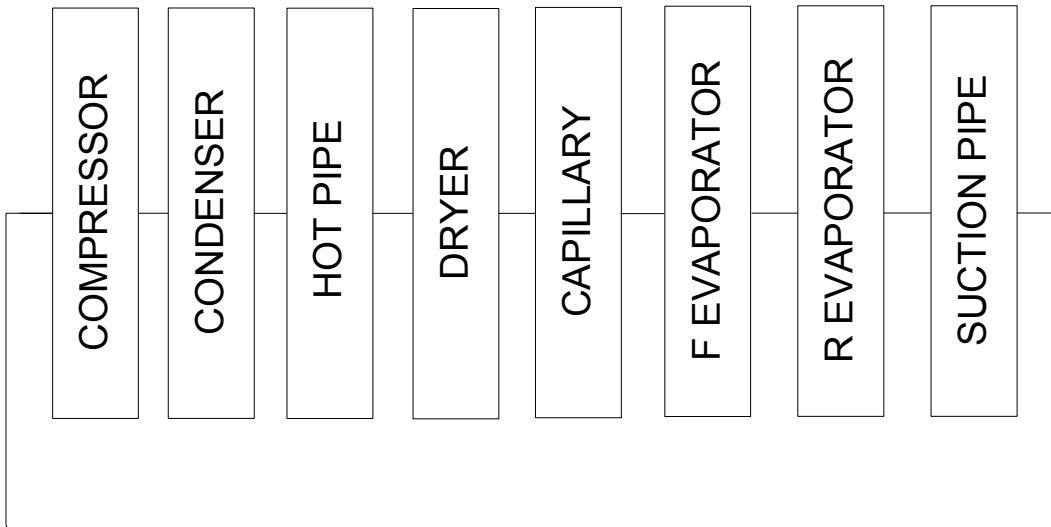
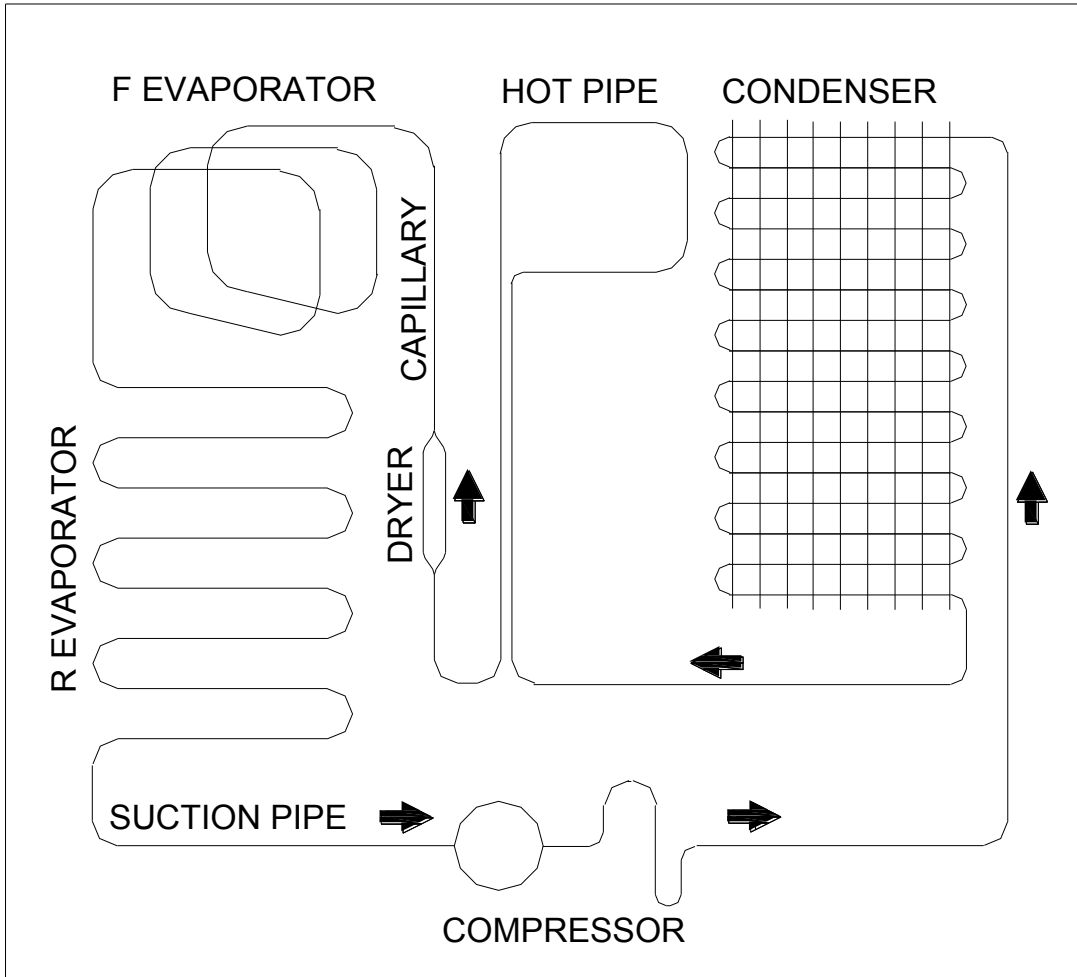
Vestel refrigerator serial numbers are consist of 22 digits.



Exp:10738887

233-263-283 (NEW DESIGN)

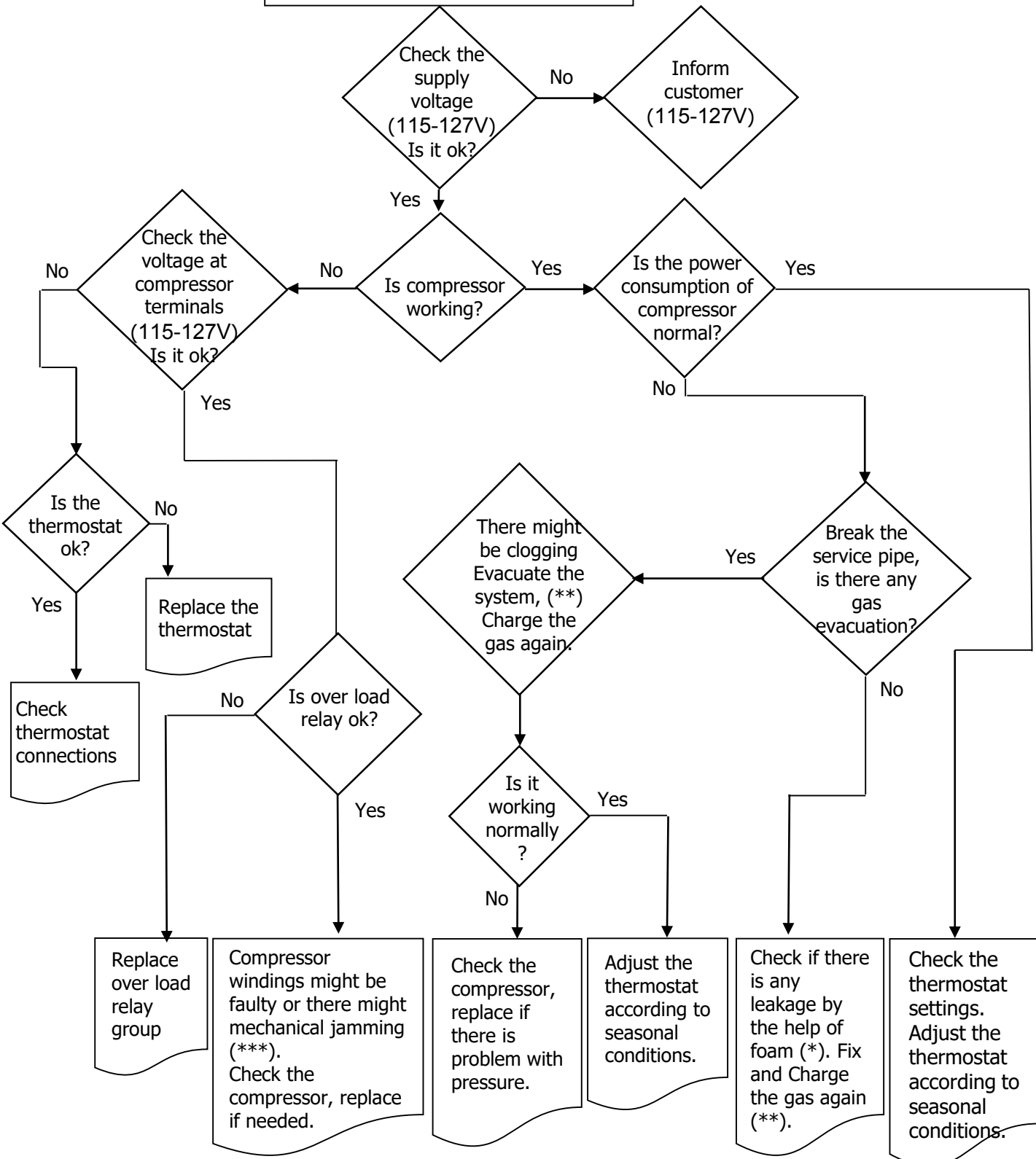
REFRIGERANT CYCLE DIAGRAM



233-263-283 (NEW DESIGN)

TROUBLE-SHOOTING CHART

No/Insufficient cooling

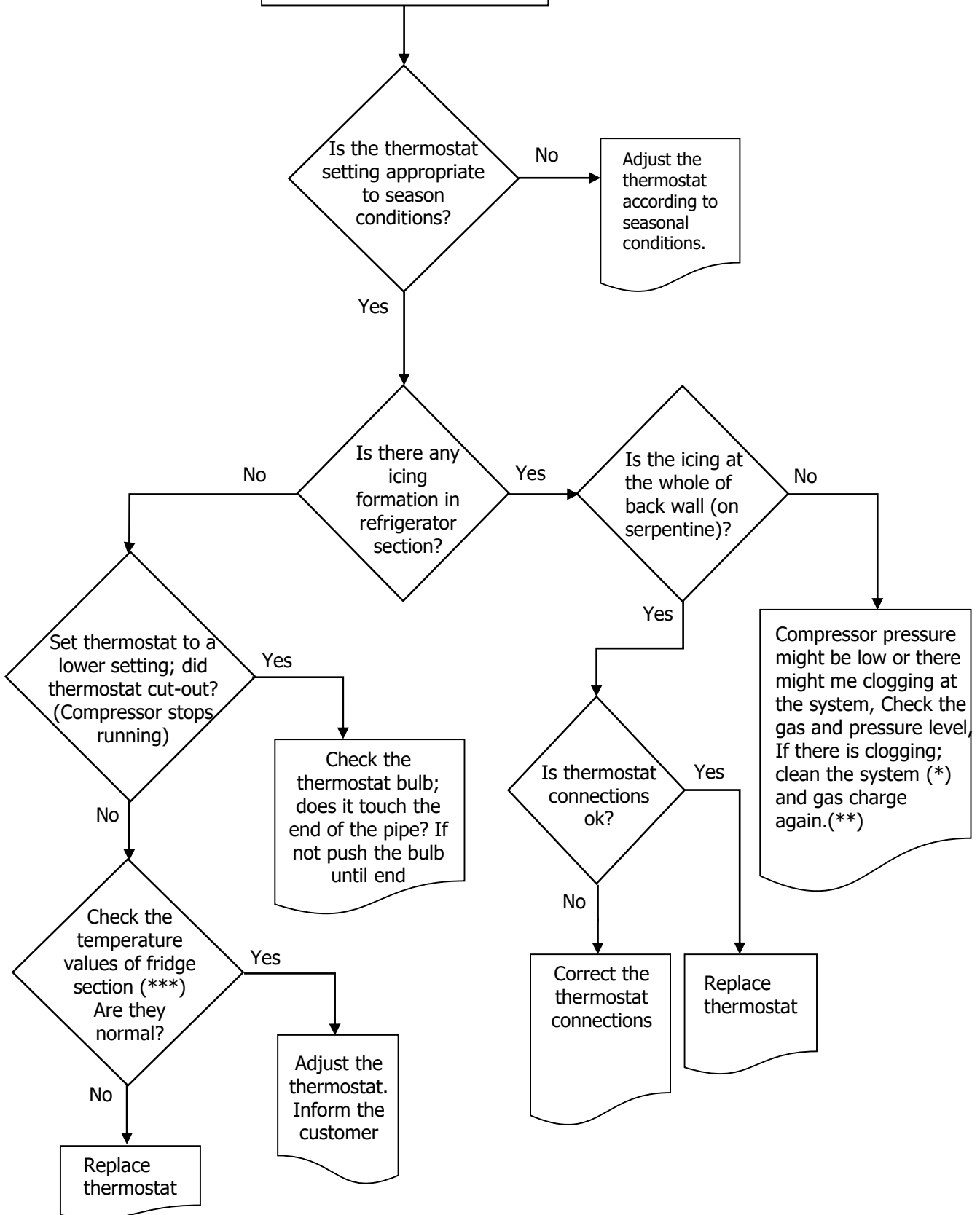


(*) Check all pipes, tubes and welding points against gas leakage. (**) Before charging gas to system, change dryer and vacuum at least 30 minutes, then charge the system with amount written on label (***) Compressor primary winding should be around 10 Ω and secondary around 15 Ω (at 25°C ambience temp.)

233-263-283 (NEW DESIGN)

TROUBLE-SHOOTING CHART

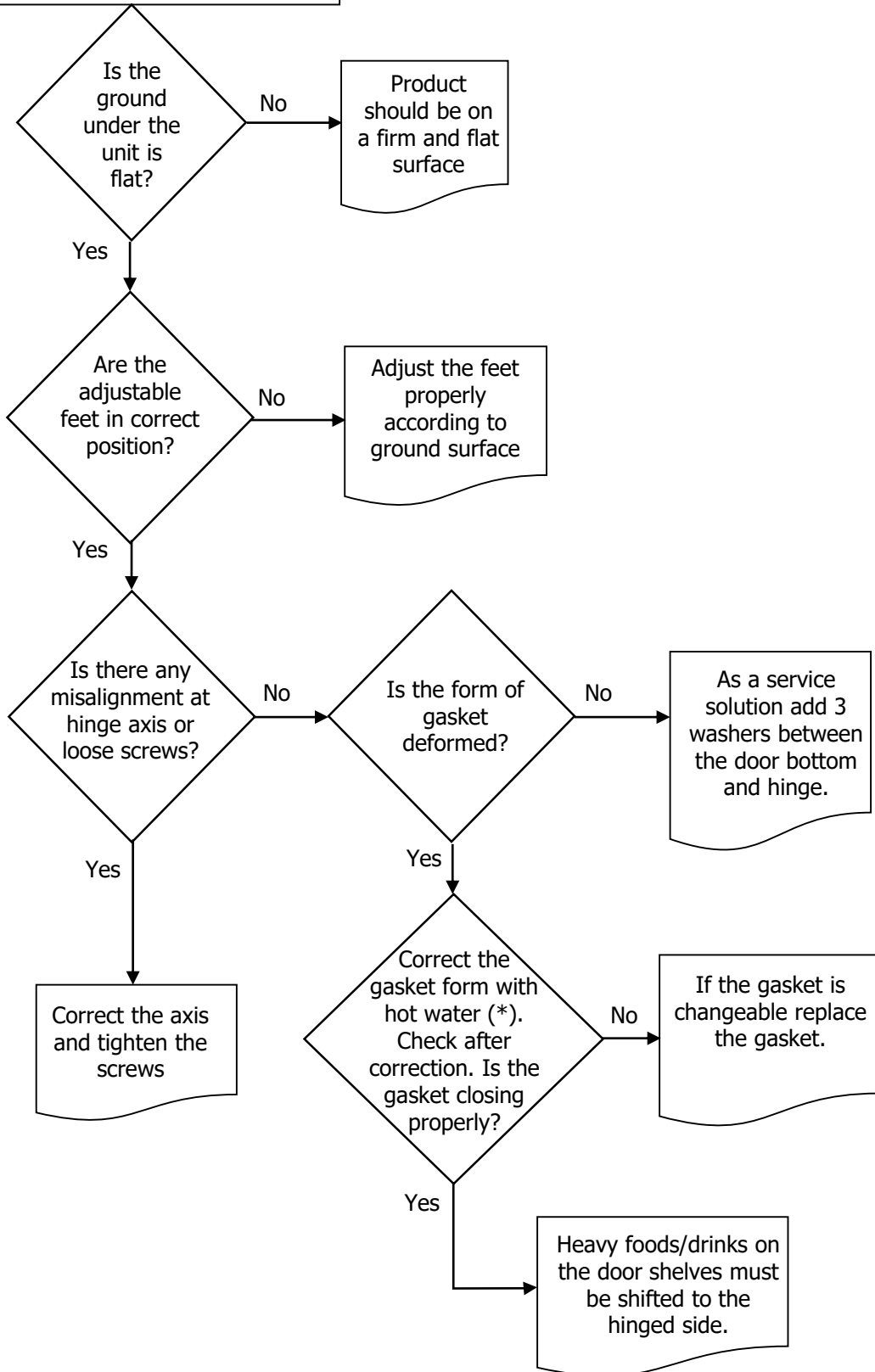
Excessive Cooling



233-263-283 (NEW DESIGN)

TROUBLE-SHOOTING CHART

Door/Gasket Adjustment



(*) Correct the gasket form by the help of hot water and hair dryer.

233-263-283 (NEW DESIGN)

TROUBLE-SHOOTING CHART

