

Thermostat Setting

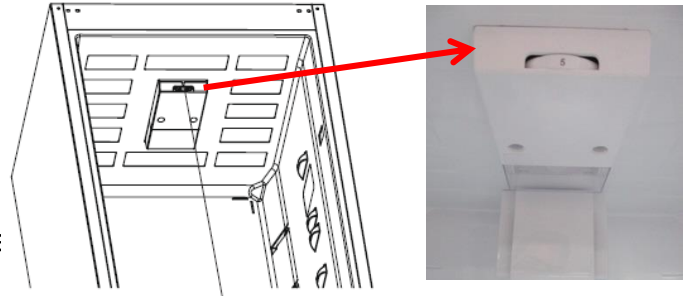
It ensures that the temperature settings in the cooling and freezing compartments of your refrigerator are performed automatically. It may be set to any value ranging from 1 to 5. As you turn the thermostat setting knob from 1 to 5, the temperature decreases. To save energy in winter months, operate your refrigerator in a lower position.

Fridge compartment thermostat knob;

1 – 2 : For short-term storage of food in the freezer compartment.

3 – 4 : For long-term storage of food in the freezer compartment.

5: For freezing fresh food. The appliance will work longer. Once the food is fully frozen, reset the thermostat to its original position.

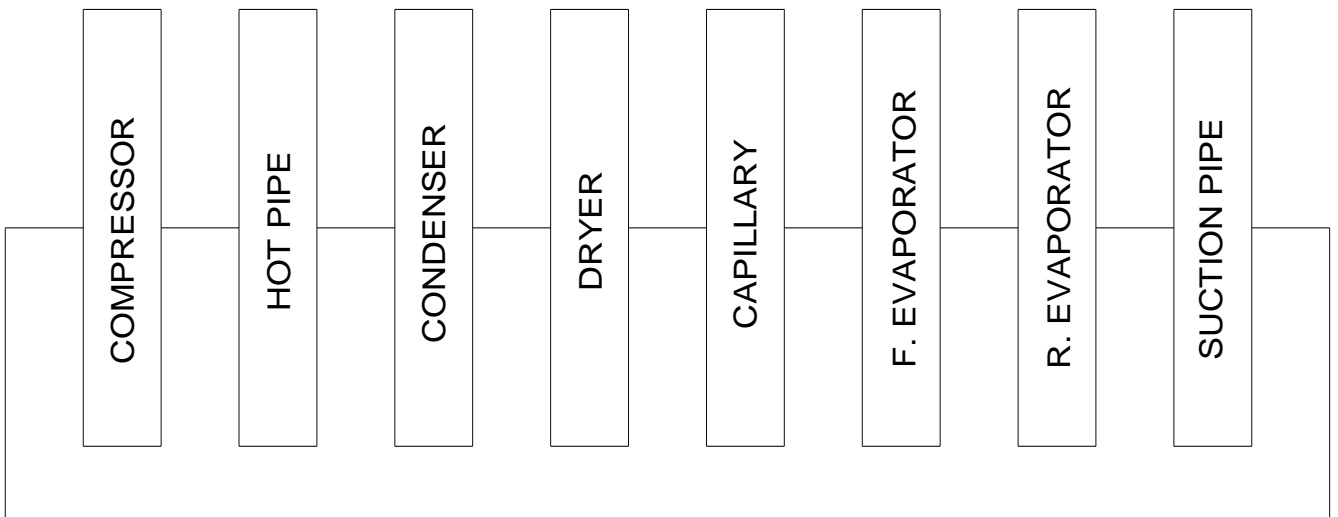
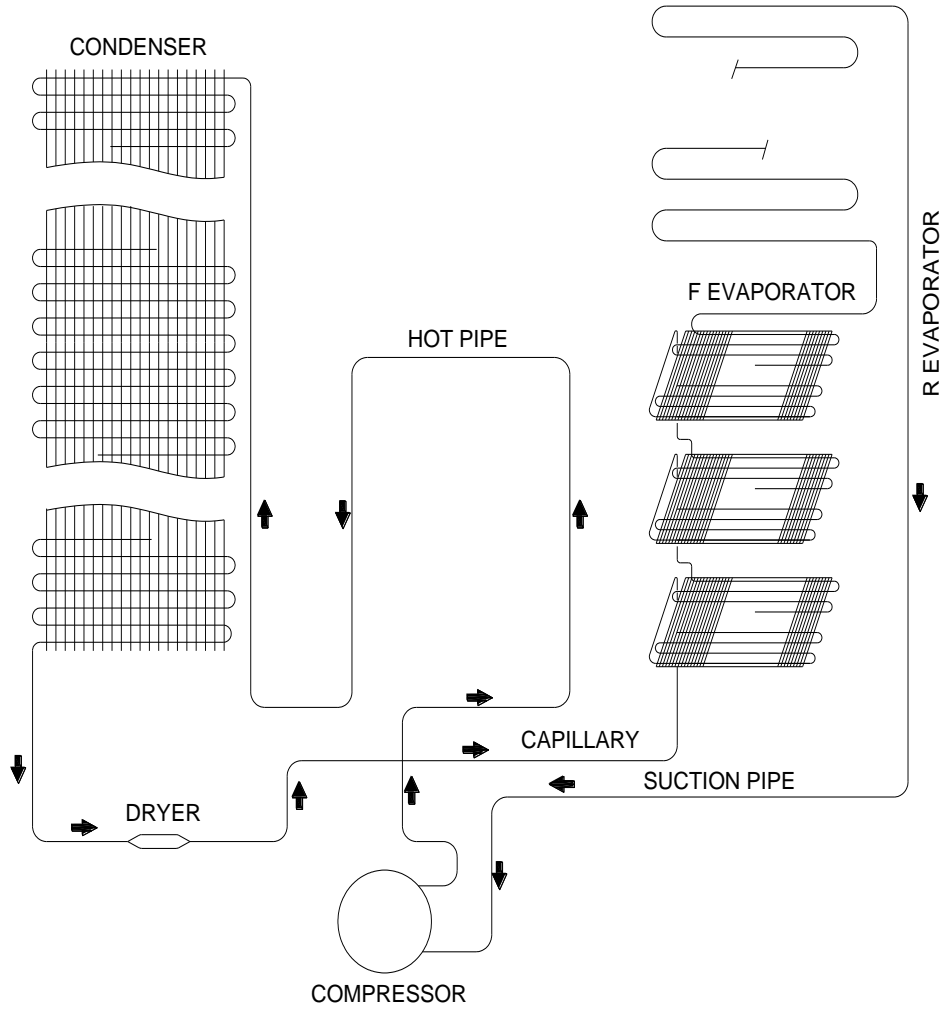


Thermostat knob

Warnings about Temperature Adjustments

- It is not recommended that you operate your fridge in environments colder than 10 °C in terms of its efficiency.
- Temperature adjustments should be made according to the frequency of doors openings and the quantity of food kept inside the fridge-freezer.
- Your fridge-freezer should be operated up to 24 hours according to the ambient temperature without interruption after being plugged in to be completely cooled. Do not open doors of your fridge-freezer frequently and do not place much food inside it in this period.
- During power cut, to prevent any compressor problem you should unplug the fridge-freezer. You should delay plugging in 5 – 10 minutes after your power supply returns. Of you plug out the fridge-freezer for a reason you should wait at least 5 min to replug. It is important for avoiding damage to fridge-freezer's components.
- Your fridge-freezer is designed to operate in the ambient temperature intervals according to the climate class stated on the information label. In terms of cooling effectiveness, we do not recommend operating your fridge-freezer outside of the stated temperature values.
- This equipment is designed for use at an ambient temperature within the 16°C - 38°C range.

Climate class	Ambient temperature °C
T	Between 16 - 43 °C
ST	Between 16 - 38 °C
N	Between 16 - 32 °C
SN	Between 10 - 32 °C



Changing The Door Swing Direction to Right Hand

1- Unscrew the two screws fixing the top hinge (Pic-1) and remove the refrigerator door. (Pic-2)



Picture-1



Picture-2

2- Unscrew the two screws fixing the middle hinge side bracket and remove it. (Pic-3)



Picture-3

3- Unscrew the two screws fixing the middle hinge (Pic-4) and remove the freezer door. (Pic-5)



Picture-4



Picture-5

4- Remove the bottom hinge pin (Pic-5) and insert it to the left side foot. (Pic-6)



Picture-5



Picture-6

5- Unscrew the middle hinge side bracketed on the left and remove it. (Pic-7)
Remove the middle hinge screw caps (big) on the left side.



Picture-7

6- Assemble the refrigerator door. Rotate the middle hinge by 180° and screw it to the left side. (Pic-8) Then screw the middle hinge side bracketed on the middle hinge. (Pic-9)



Picture-8



Picture-9

7- Remove the top hinge screw caps (big) on the left side (Pic-10) and insert them to the right side. (Pic-11) (You can find the new caps in the user manual bag)



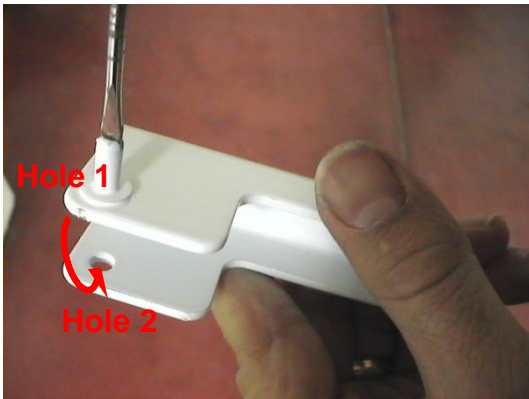
Picture-10



Picture-11

8- Unscrew the pin of the hinge from Hole 1, rotate the top hinge by 180° and screw the pin to Hole 2. (Pic-12)

9- Assemble the freezer door and screw the top hinge to the left side. (Pic-13)



Picture-12



Picture-13

10- Screw the middle hinge side bracketed on the right of refrigerator. (Pic-14) and insert the middle hinge screw caps (big) on the right side. (Pic-15) (You can find the new caps in the user manual bag)



Picture-14



Picture-15

Replacement of Door Switch

1. Insert a screwdriver into the gap and pull the door switch.



Picture-1

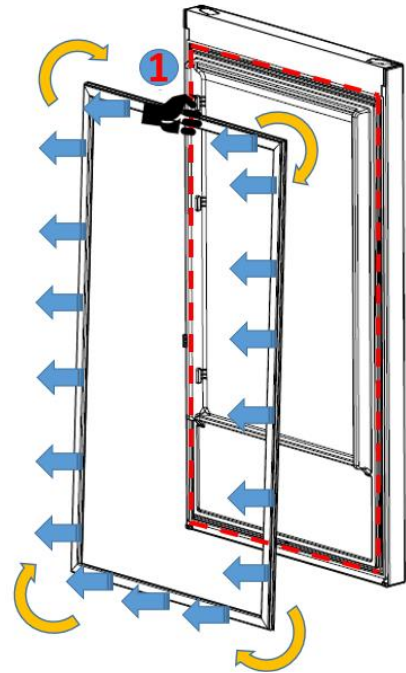
2. Disconnect the connectors. And remove the door switch.



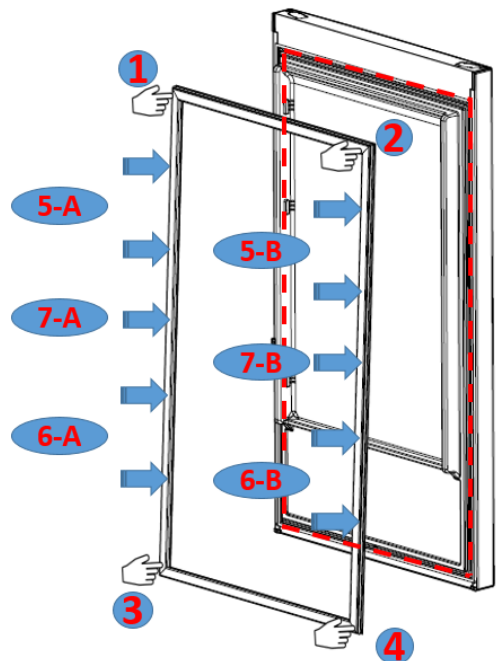
Picture-2

Replacement of Door Gasket

Pull the gasket towards starting from top right corner
 Slowly pull the rest of the gasket.
 Completely remove the gasket from door.



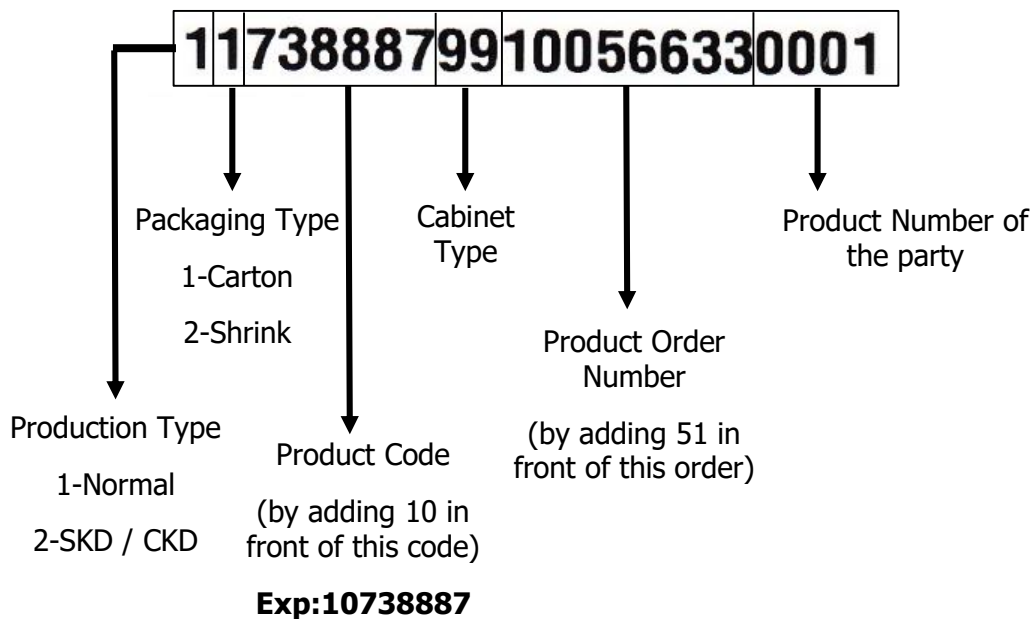
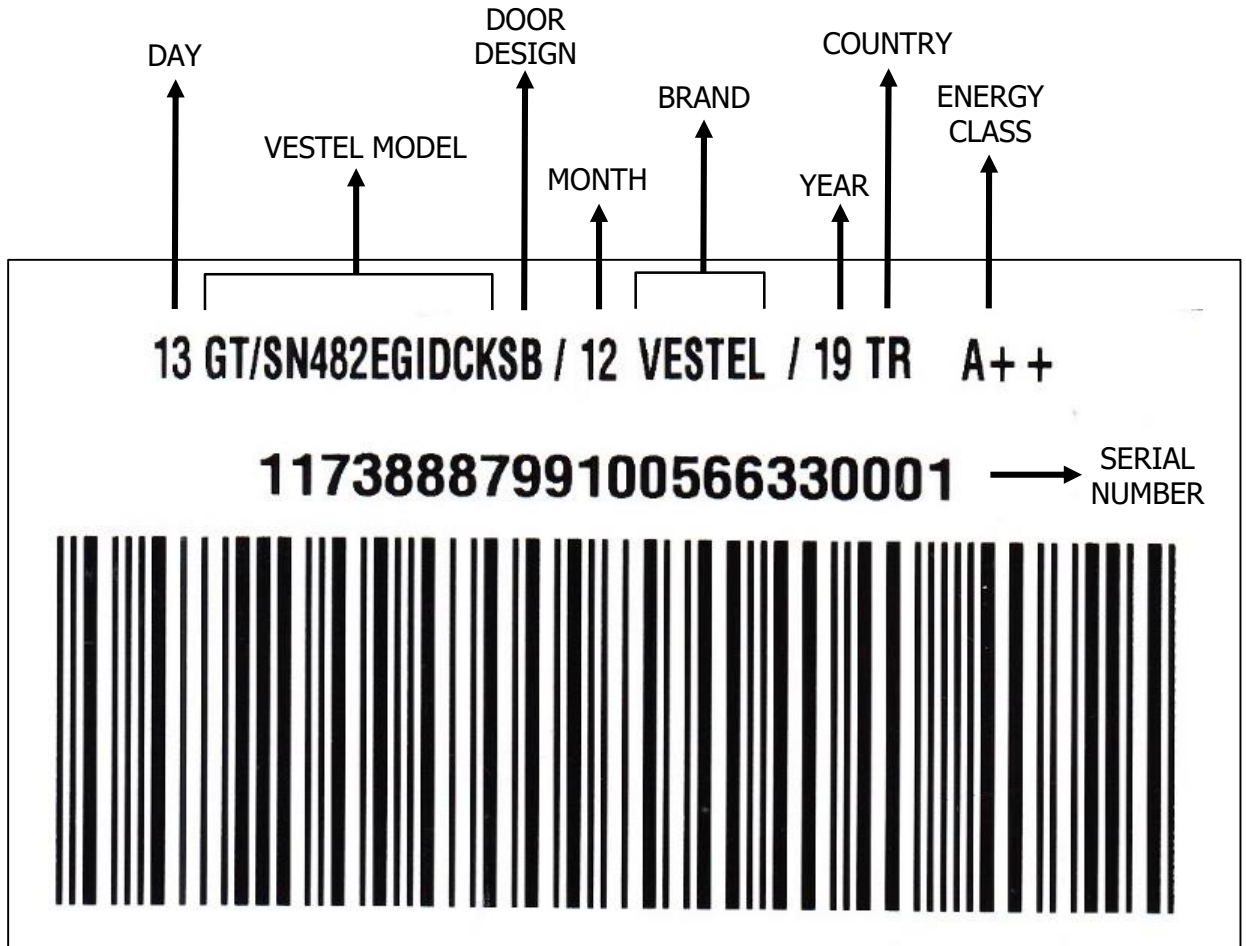
Check the replacement gasket form
 Starting with upper right corner, press on the gasket until it fits to its place..
 Place the other sides of the gasket with the help of your thumb



After the replacement check if there any non-fitting point on the gasket. Also check if there any opening at the gasket while the door is closed. If so that might cause condensation/icing or insufficient cooling/freezing. To prevent this soften the form of the gasket with the help of a hair dryer or hot water and make sure that all points are closing perfectly.

Barcode and Serial Number Explanation:

Vestel refrigerator serial numbers are consist of 22 digits.



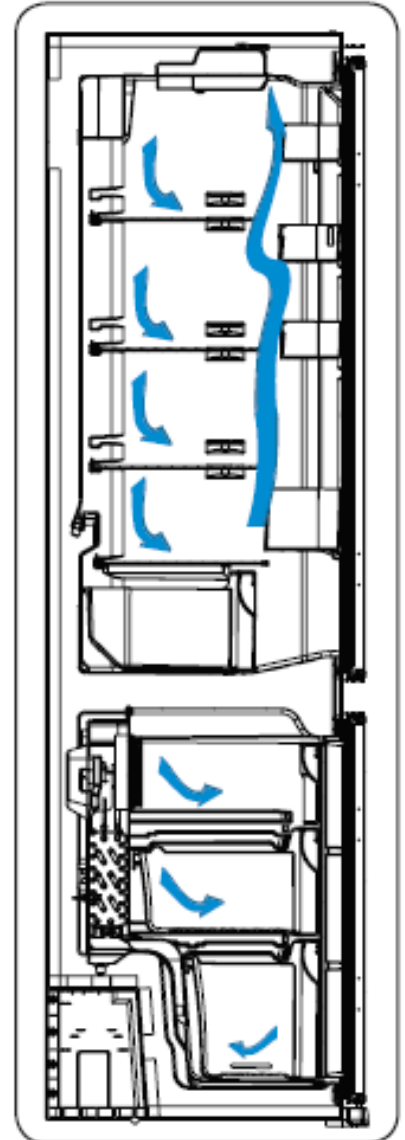
Information About The New Generation Cooling Technology

The New Generation Cooling Technology refrigerators are different from the other static refrigerators in terms of their operational system.

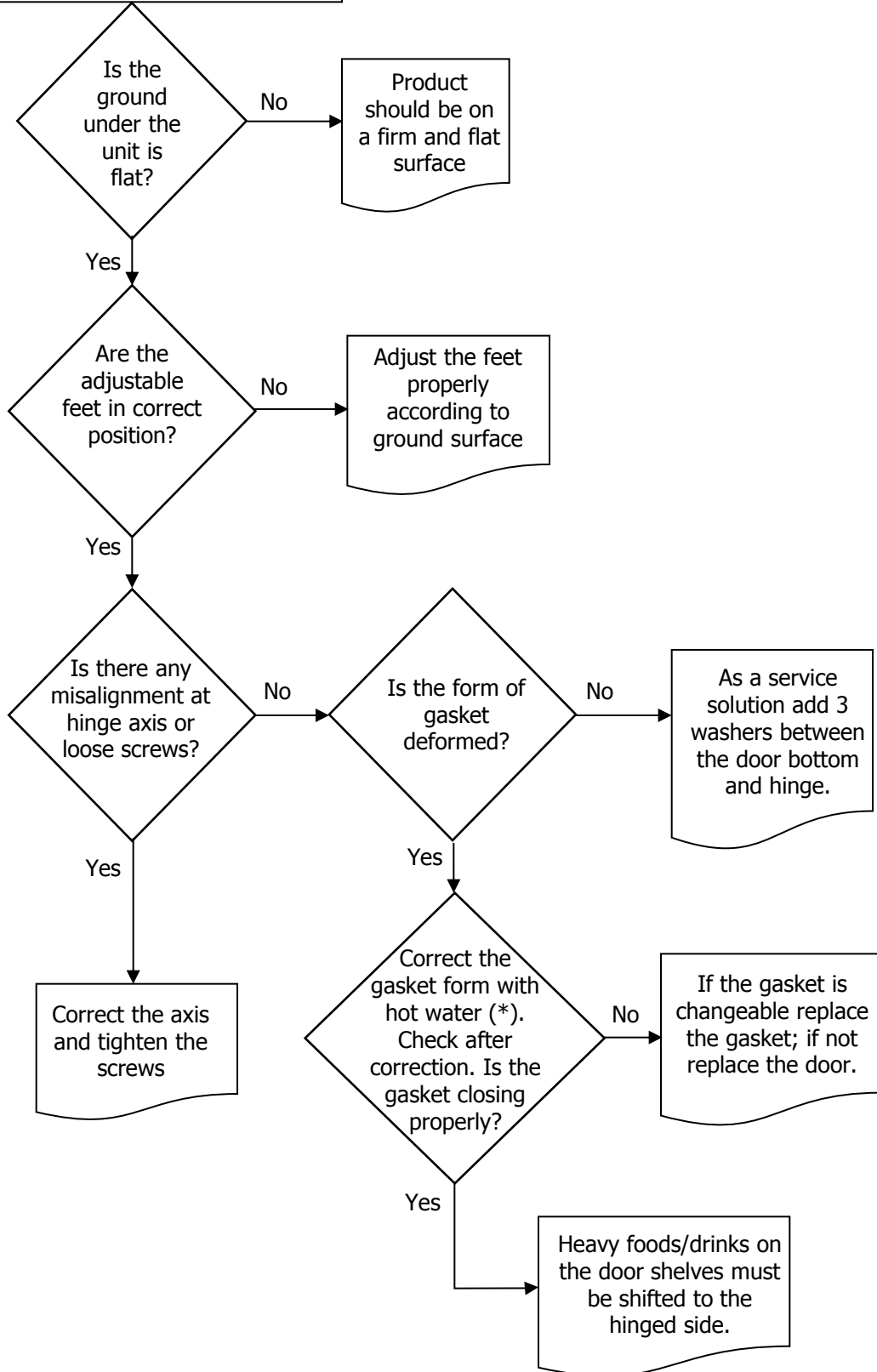
In normal fridge freezers, the humidity entering the fridge freezer due to opening the door and the humidity inherent in the food causes freezing in the freezer compartment. To defrost the frost and ice in the freezer compartment, you are periodically required to turn off the fridge, place the food that needs to be kept frozen in a separately cooled container and remove the ice gathered in the freezer compartment.

The situation is completely different in no-frost refrigerators. Dry and cold air is blown into the fridge and freezer compartments homogeneously and evenly from several points via a blower fan. Cold air dispersed homogeneously and evenly between the shelves cools all of your food equally and uniformly, thus preventing humidity and freezing.

Therefore your New Generation Cooling Technology fridge freezer allows you ease of use, in addition to its huge capacity and stylish appearance.



Door/Gasket Adjustment



(*) Correct the gasket form by the help of hot water and hair dryer.