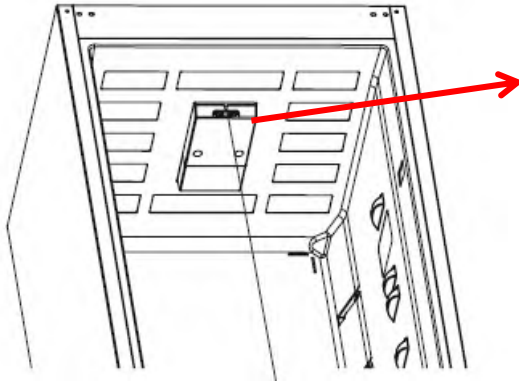


## Thermostat Setting

The thermostat automatically regulates the temperature inside the cooler and freezer compartments. Refrigerator temperatures can be obtained by rotating the knob to higher numbers; 1 to 3, 1 to 5 or SF (Maximum numbers on the thermostat depends on your product.)

### Thermostat knob



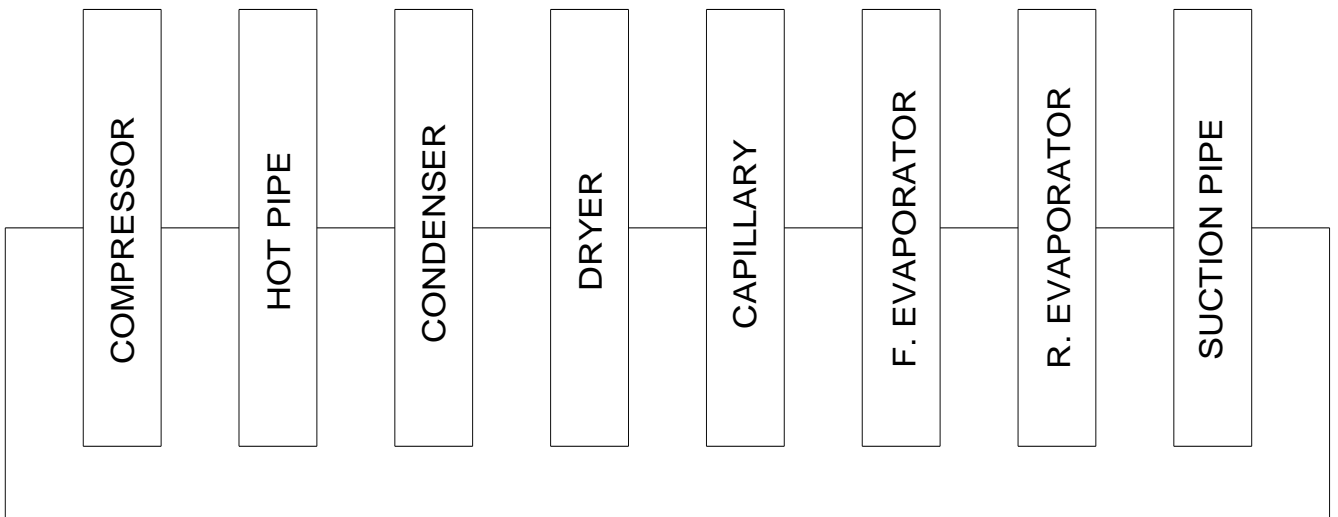
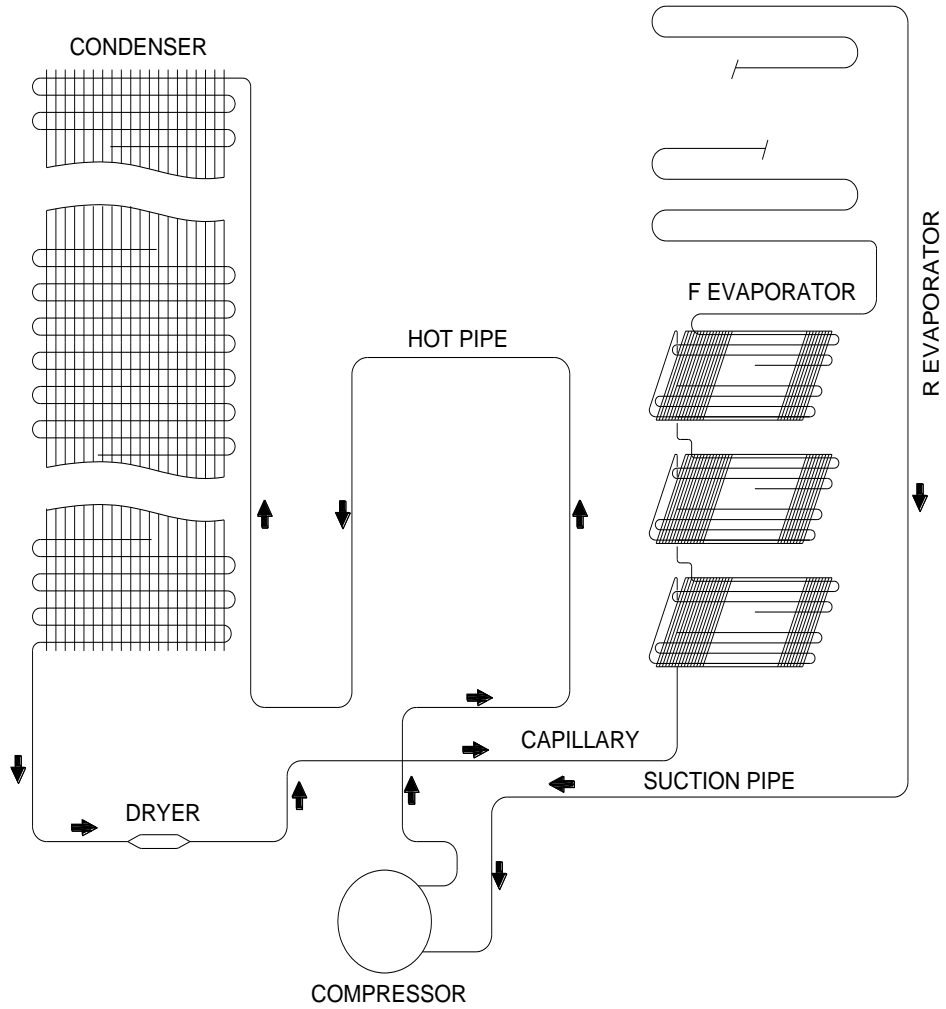
**1 – 2** : For short-term storage of food

**3 – 4** : For long-term storage of food

**5** : Maximum cooling position. The appliance will work longer. If required, change the temperature setting.

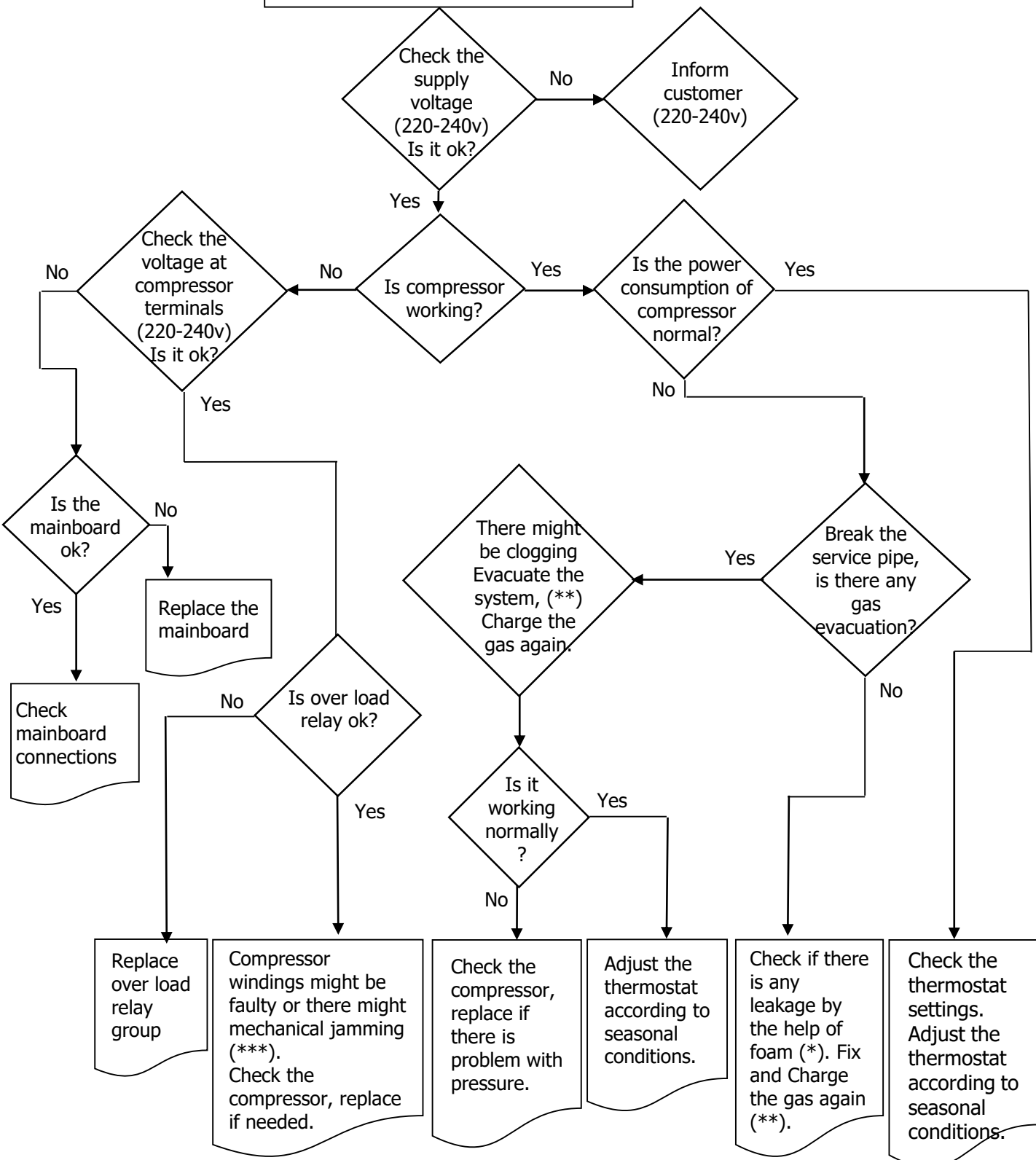
If device has SF position:

- Turn the knob to SF to freeze fresh food quickly. In this position, the freezer compartment will operate at lower temperatures. After your food freezes, turn the thermostat knob to its normal use position. If you do not change the SF position, your appliance work will automatically return to its last used thermostat position according to the time indicated in the note. Return the thermostat switch to the SF position and return it to normal use according to the time indicated in the note. If the thermostat switch is in the SF position when your appliance is first started, your appliance work will automatically return to the operation in the thermostat-3 position according to the time indicated in the note.



## TROUBLE-SHOOTING CHART

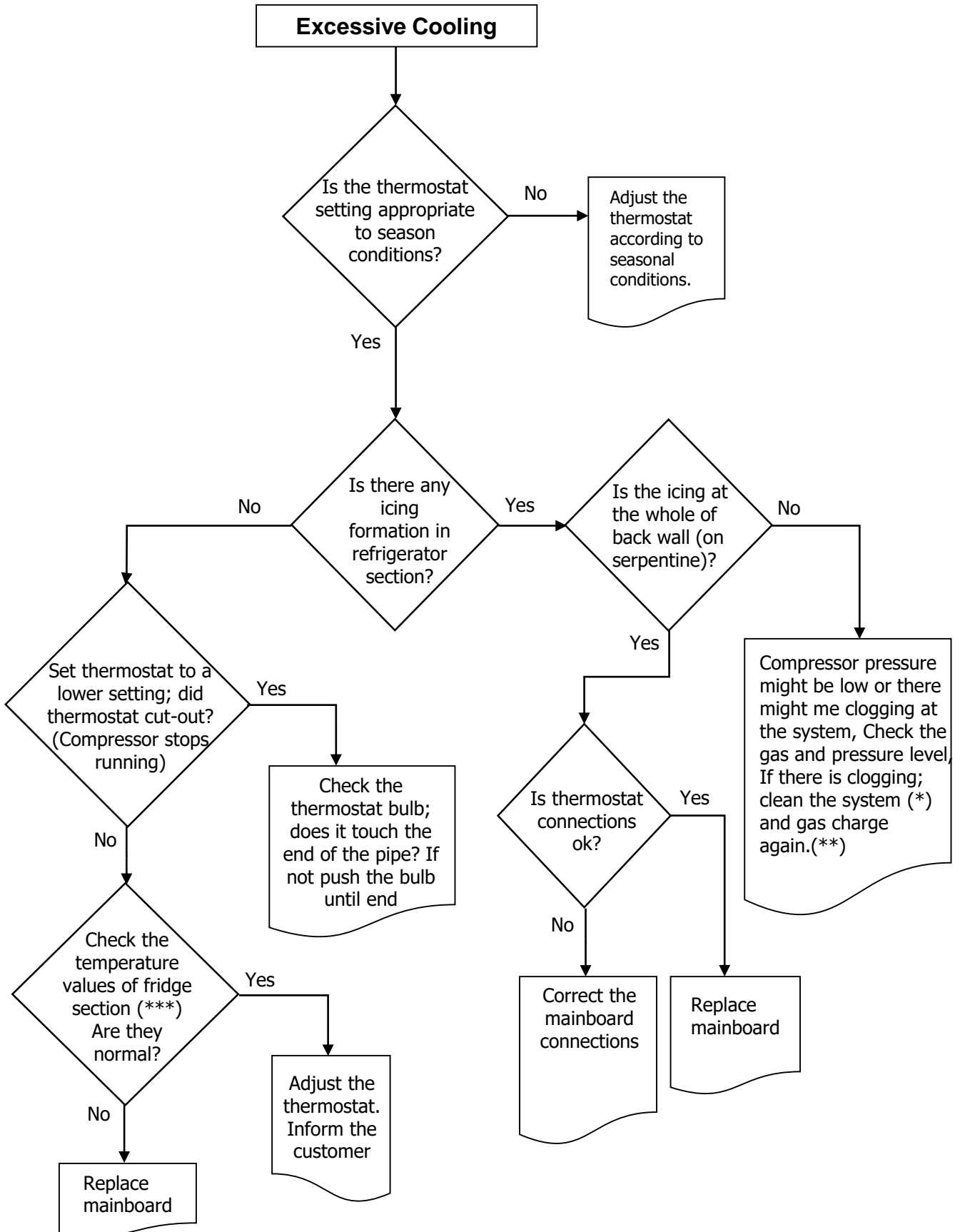
**No/Insufficient cooling**



(\*) Check all pipes, tubes and welding points against gas leakage. (\*\*) Before charging gas to system, change dryer and vacuum at least 30 minutes, then charge the system with amount written on label (\*\*\*) Compressor primary winding should be around 10 Ω and secondary around 15 Ω (at 25°C ambience temp.)

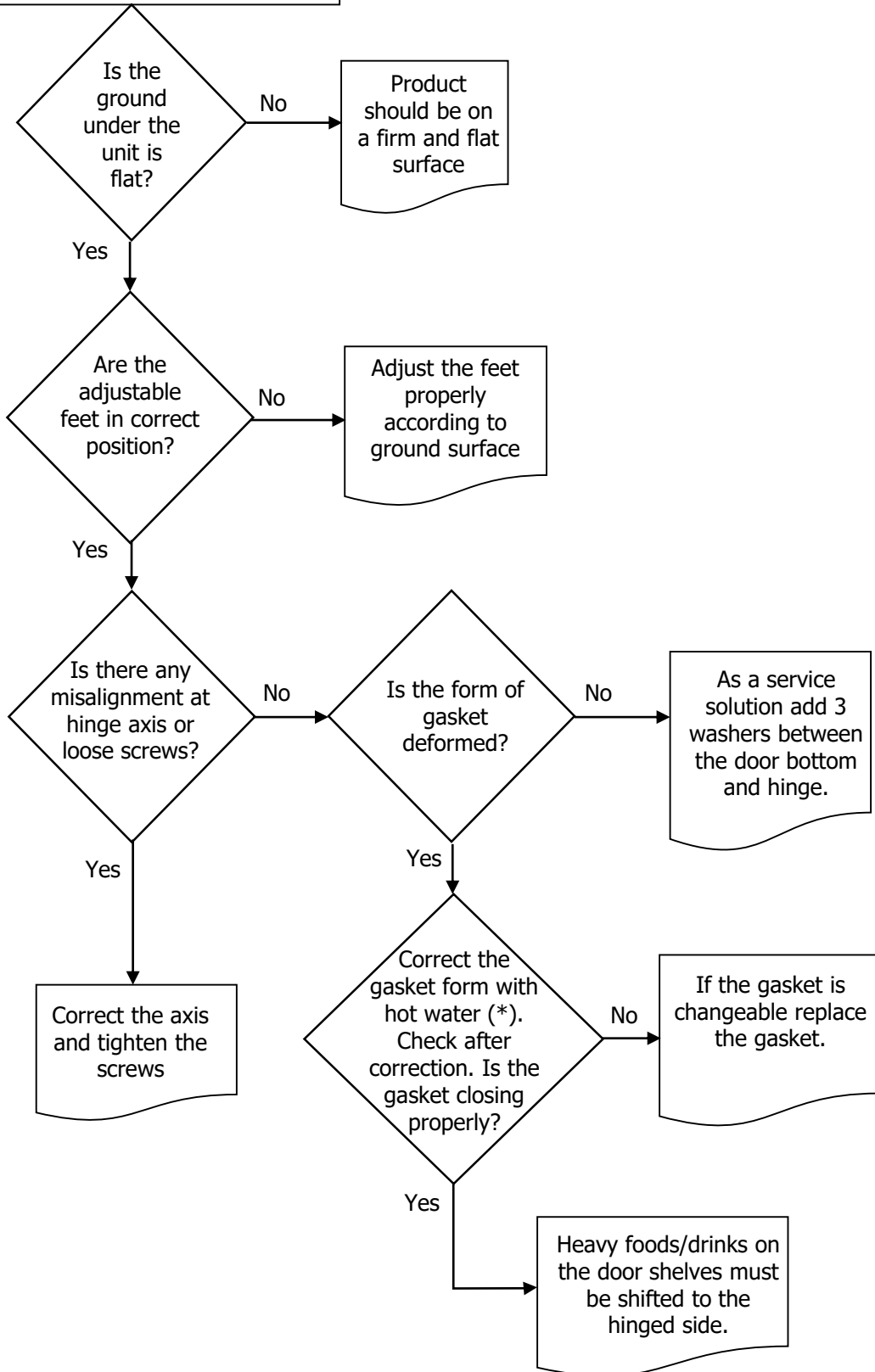
**TROUBLE-SHOOTING CHART**

**Excessive Cooling**



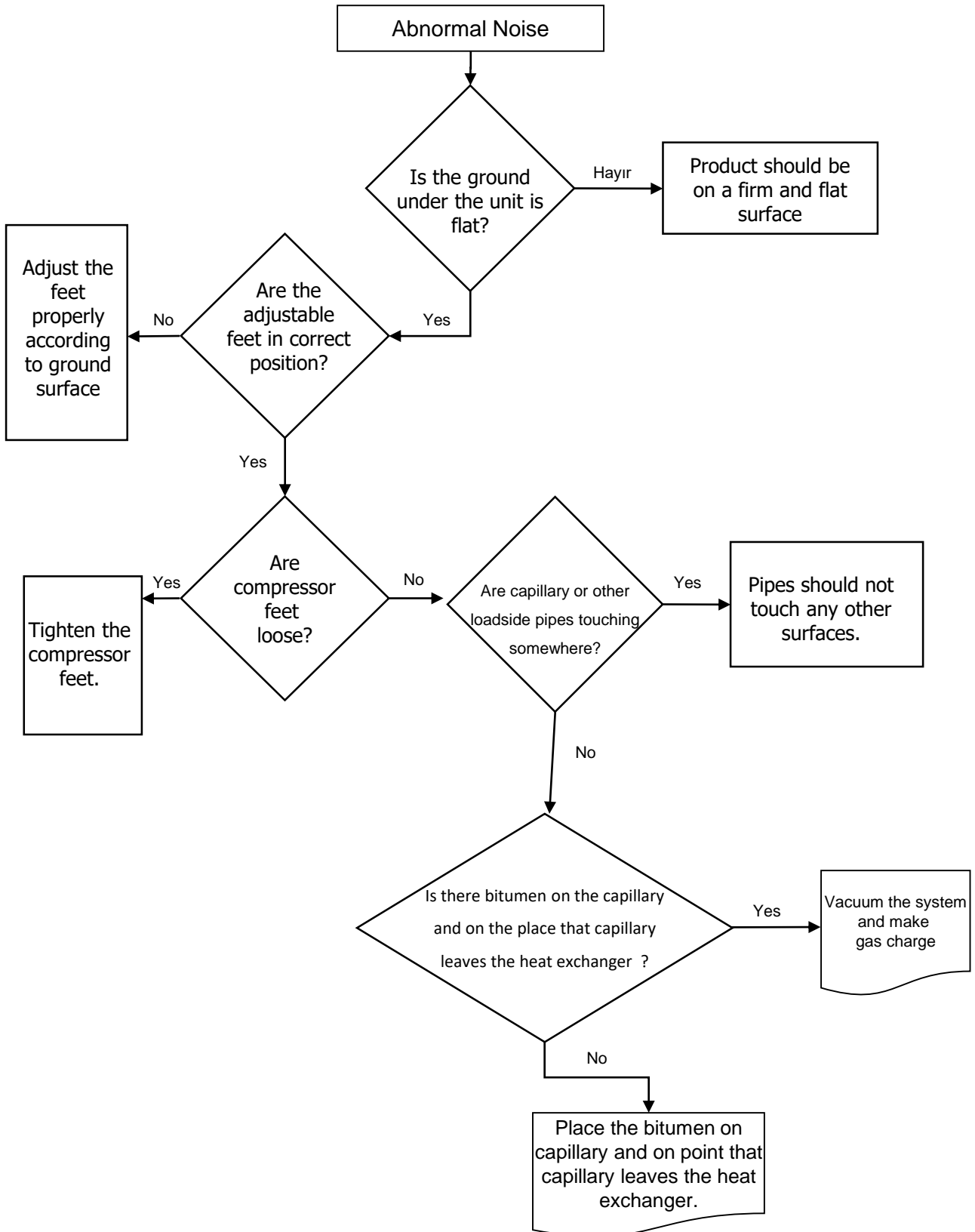
**TROUBLE-SHOOTING CHART**

**Door/Gasket Adjustment**



**(\*) Correct the gasket form by the help of hot water and hair dryer.**

TROUBLE-SHOOTING CHART



## Changing The Door Swing Direction to Right Hand

1- Unscrew the two screws fixing the top hinge (Pic-1) and remove the refrigerator door. (Pic-2)



**Picture-1**



**Picture-2**

2- Unscrew the two screws fixing the middle hinge side bracket and remove it. (Pic-3)



**Picture-3**

3- Unscrew the two screws fixing the middle hinge (Pic-4) and remove the freezer door. (Pic-5)



**Picture-4**



**Picture-5**

**4-** Remove the bottom hinge pin (Pic-5) and insert it to the left side foot. (Pic-6)



**Picture-5**



**Picture-6**

**5-** Unscrew the middle hinge side bracked on the left and remove it. (Pic-7)  
Remove the middle hinge screw caps (big) on the left side.



**Picture-7**

**6-** Assemble the refrigerator door. Rotate the middle hinge by 180° and screw it to the left side. (Pic-8) Than screw the middle hinge side bracked on the middle hinge. (Pic-9)



**Picture-8**



**Picture-9**

**7-** Remove the top hinge screw caps (big) on the left side (Pic-10) and insert them to the right side. (Pic-11) (You can find the new caps in the user manual bag)



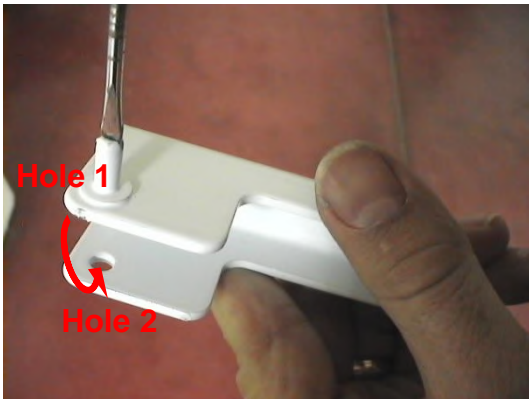
**Picture-10**



**Picture-11**

**8-** Unscrew the pin of the hinge from Hole 1, rotate the top hinge by 180° and screw the pin to Hole 2. (Pic-12)

**9-** Assemble the freezer door and screw the top hinge to the left side. (Pic-13)



**Picture-12**



**Picture-13**

**10-** Screw the middle hinge side bracketed on the right of refrigerator. (Pic-14) and insert the middle hinge screw caps (big) on the right side. (Pic-15) (You can find the new caps in the user manual bag)



**Picture-14**



**Picture-15**

**Removing/Assembling The Door Switch**

**1.** Stick a tape to protect the body plastic. Flex it with the help of a tool like a slotted screwdriver. (Pic-1)



**Picture-1**

**2.** Also flex the top-side of the switch and then displace by pulling. (Pic-2)



**Picture-2**

**3.** Put the switch connector cable in the housing. First place the top-side of the switch and then push the bottom side.(Pic-3.1/Pic-3.2)



**Picture-3.1**

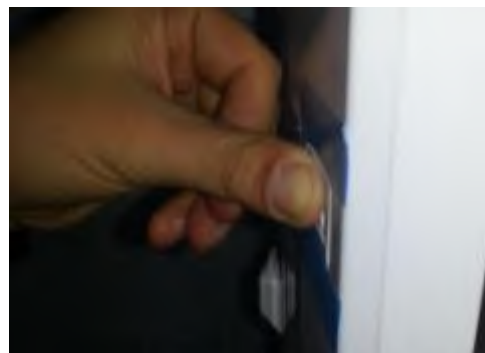


**Picture-3.2**

**4.** After the switch is placed, complete the assembly by pushing. (Pic-4)



**Picture-4.1**

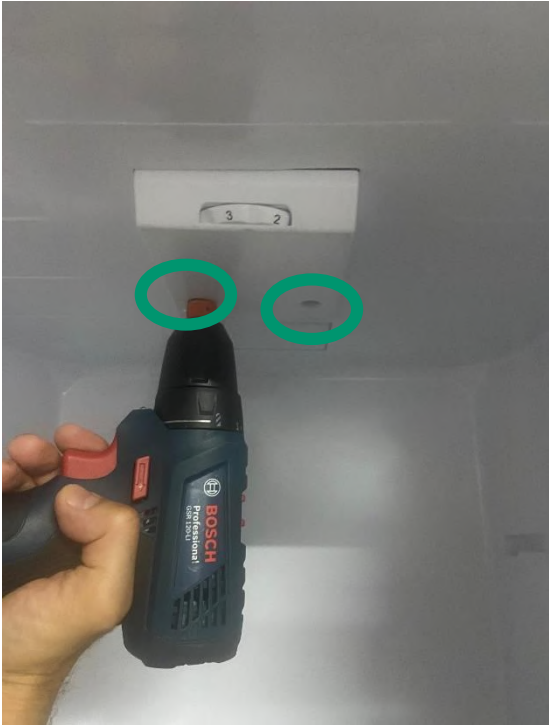


**Picture-4.2**

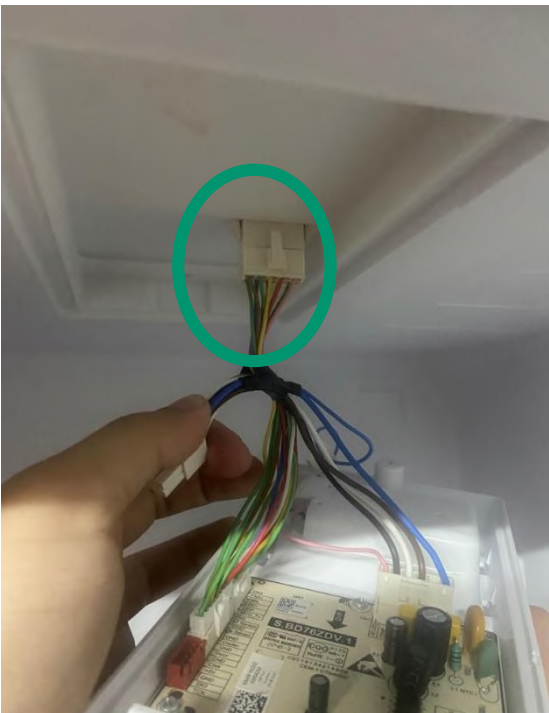
**CAUTION: The bottom-top details of the switch are different from each other to avoid assembling wrong!**

**Removing The Thermostat Box Gr**

Unscrew the screw fixing the thermostat box.



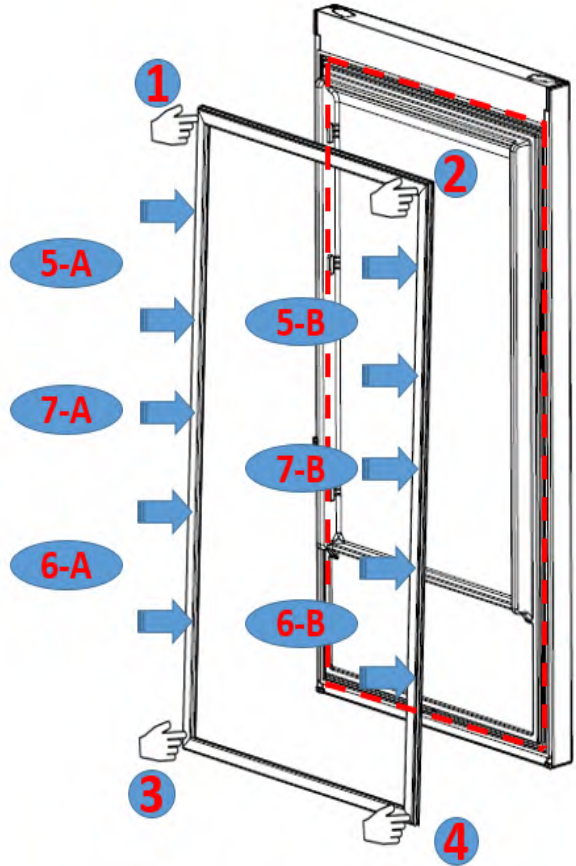
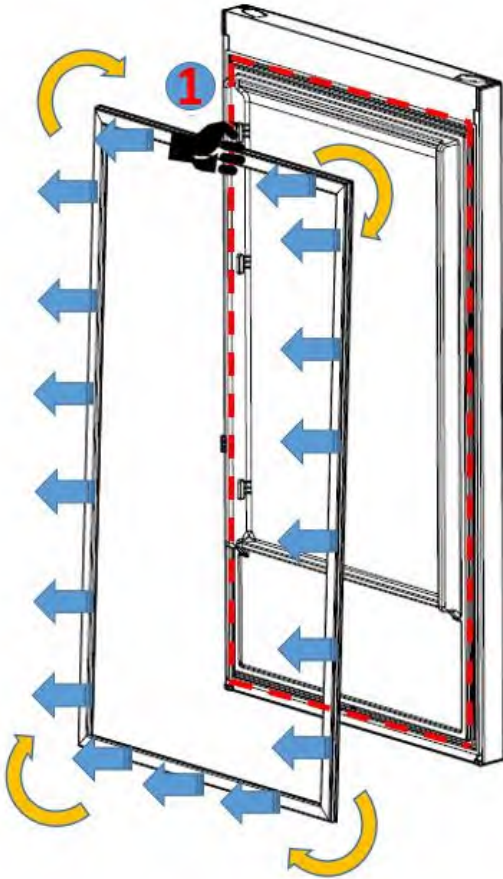
Disconnect the connector after removing it.



**Removing- Assembling The Door Gasket**

Pull the gasket towards starting middle of the top edge as shown. Slowly pull towards left and right corner. Then continue through frame until the gasket will completely removebe removed from door.

Check the replacement gasket form. Starting with upper left corner, press on the gasket until it fits to its place.. Place the other sides of the gasket with the help of your thumb as the sequence shown on picture.



After the replacement check if there any non-fitting point on the gasket. Also check if there any opening at the gasket while the door is closed. If so that might cause condensation/icing or insufficient cooling/freezing. To prevent this soften the form of the gasket with the help of a hair dryer or hot water and make sure that all points are closing perfectly.

**Barcode and Serial Number Explanation:**

Vestel refrigerator serial numbers are consist of 22 digits.

