

Thermostat Setting

It ensures that the temperature settings in the cooling and freezing compartments of your refrigerator are performed automatically. It may be set to any value ranging from 1 to 5. As you turn the thermostat setting knob from 1 to 5, the temperature decreases. To save energy in winter months, operate your refrigerator in a lower position.

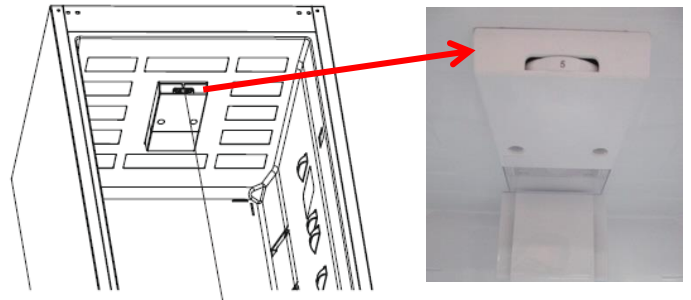
Fridge compartment thermostat knob;

3 – 4 : For long-term storage of food

5 : Maximum cooling position. The appliance will work longer. If required, change the temperature setting.

If device has SF position:

- Turn the knob to SF to freeze fresh food quickly. In this position, the freezer compartment will operate at lower temperatures.



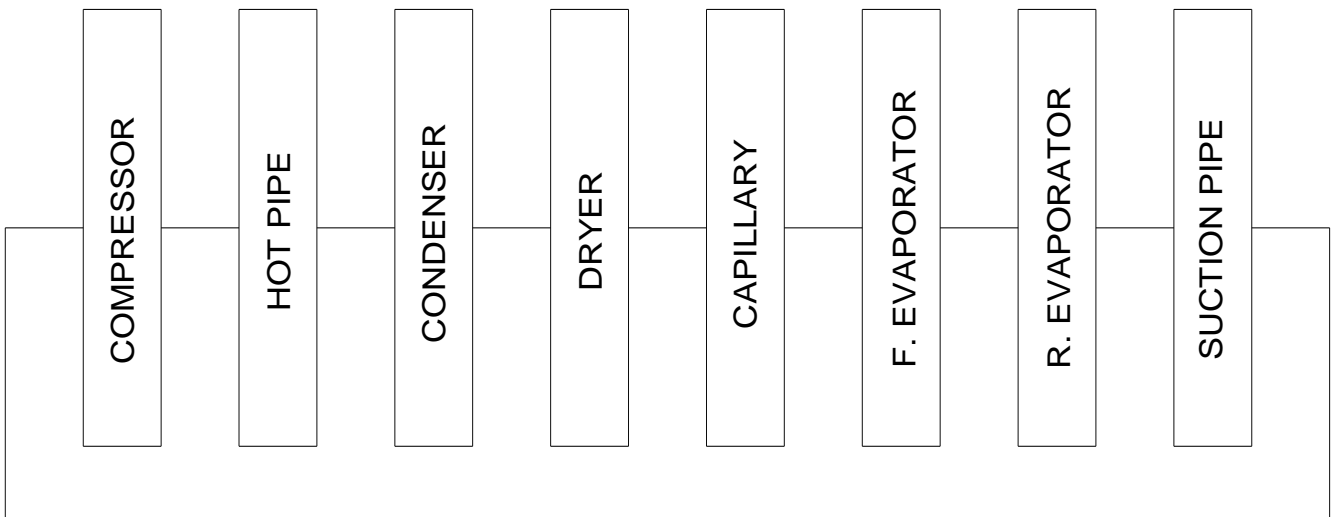
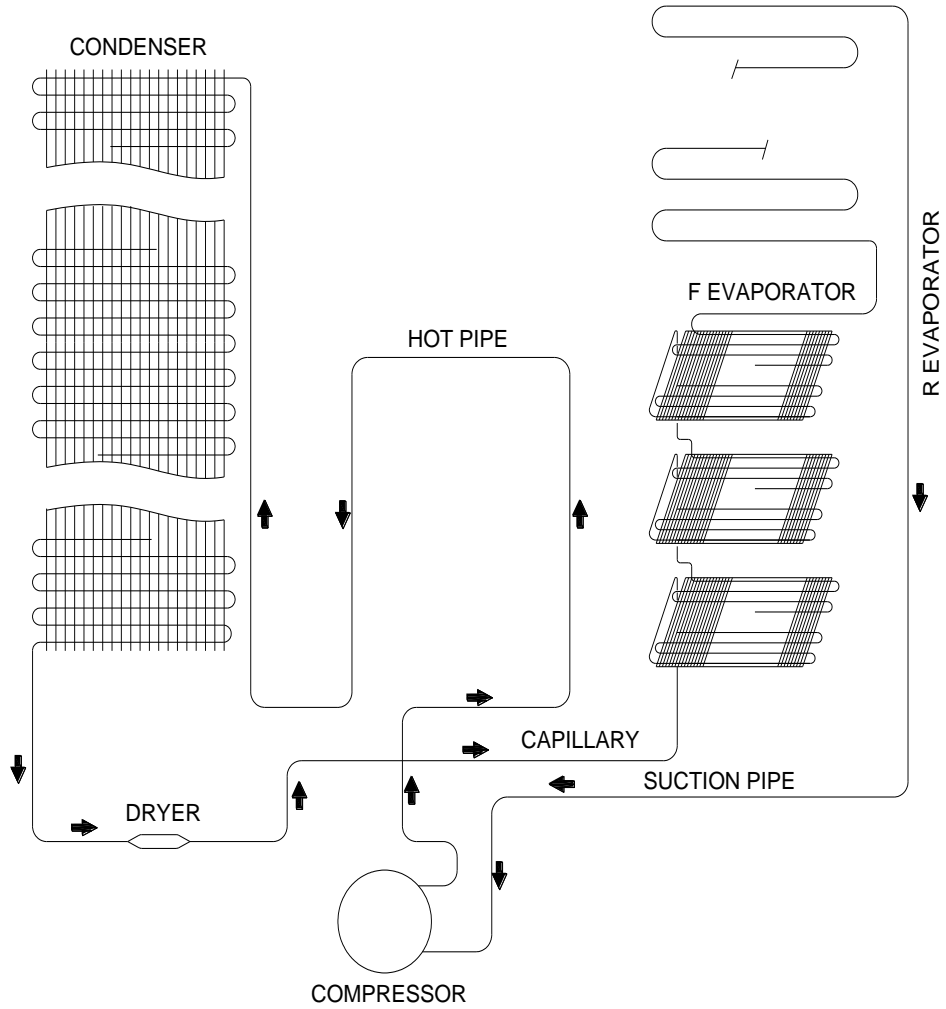
Thermostat knob

After your food freezes, turn the thermostat knob to its normal use position. If you do not change the SF position, your appliance work will automatically return to its last used thermostat position according to the time indicated in the note. Return the thermostat switch to the SF position and return it to normal use according to the time indicated in the note. If the thermostat switch is in the SF position when your appliance is first started, your appliance work will automatically return to the operation in the thermostat-3 position according to the time indicated in the note.

Super freezing: This switch shall be used as superfreeze switch. For maximum freezing capacity, please turn on this switch before placing fresh food. After placing fresh food in the freezer, 24 hours ON position is generally sufficient. In order to save energy, please turn off this switch after 24 hours from placing fresh food.

Winter Switch: If ambient temperature is below 16 C, this switch shall be used as winter switch and it keeps your fridge above 0 C while freezer is below -18 C in low ambients.

REFRIGERANT CYCLE DIAGRAM



Changing The Door Swing Direction to Right Hand

1- Unscrew the two screws fixing the top hinge (Pic-1) and remove the refrigerator door. (Pic-2)



Picture-1



Picture-2

2- Unscrew the two screws fixing the middle hinge side bracket and remove it. (Pic-3)



Picture-3

3- Unscrew the two screws fixing the middle hinge (Pic-4) and remove the freezer door. (Pic-5)



Picture-4



Picture-5

4- Remove the bottom hinge pin (Pic-5) and insert it to the left side foot. (Pic-6)



Picture-5



Picture-6

5- Unscrew the middle hinge side bracked on the left and remove it. (Pic-7)
Remove the middle hinge screw caps (big) on the left side.



Picture-7

6- Assemble the refrigerator door. Rotate the middle hinge by 180° and screw it to the left side. (Pic-8) Then screw the middle hinge side bracked on the middle hinge. (Pic-9)



Picture-8



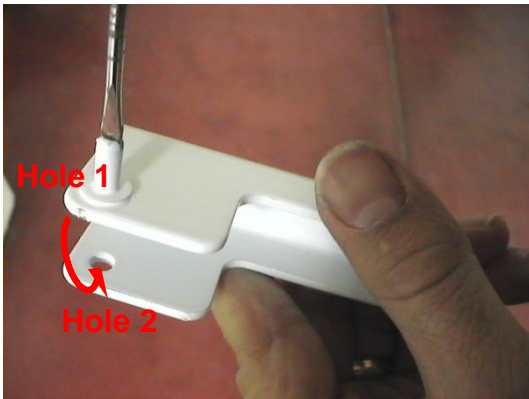
Picture-9

7- Remove the top hinge screw caps (big) on the left side (Pic-10) and insert them to the right side. (Pic-11) (You can find the new caps in the user manual bag)

**Picture-10****Picture-11**

8- Unscrew the pin of the hinge from Hole 1, rotate the top hinge by 180° and screw the pin to Hole 2. (Pic-12)

9- Assemble the freezer door and screw the top hinge to the left side. (Pic-13)

**Picture-12****Picture-13**

10- Screw the middle hinge side bracketed on the right of refrigerator. (Pic-14) and insert the middle hinge screw caps (big) on the right side. (Pic-15) (You can find the new caps in the user manual bag)

**Picture-14****Picture-15**

Replacement of Door Switch

1. Insert a screwdriver into the gap and pull the door switch.



Picture-1

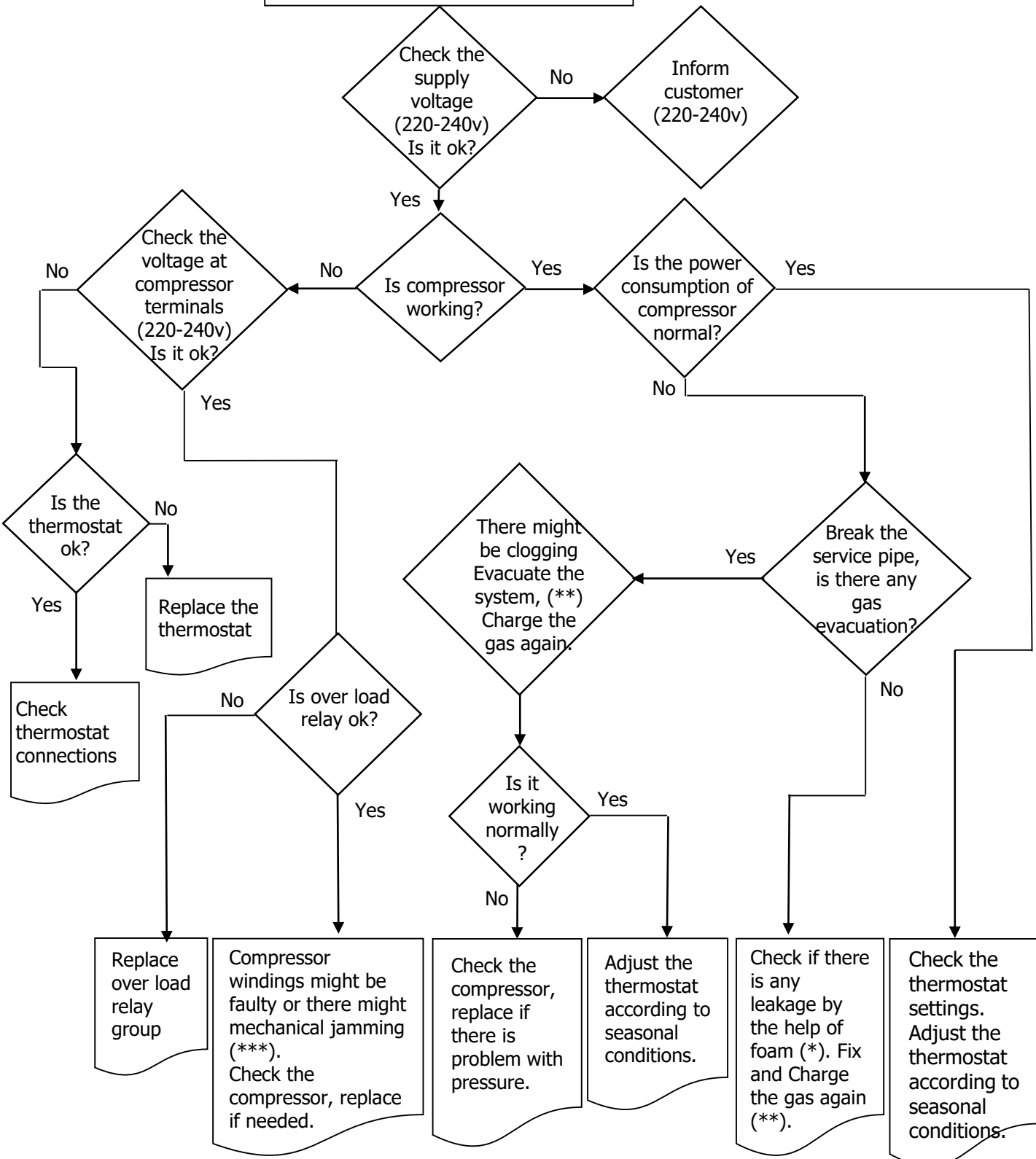
2. Disconnect the connectors. And remove the door switch.



Picture-2

TROUBLE-SHOOTING CHART

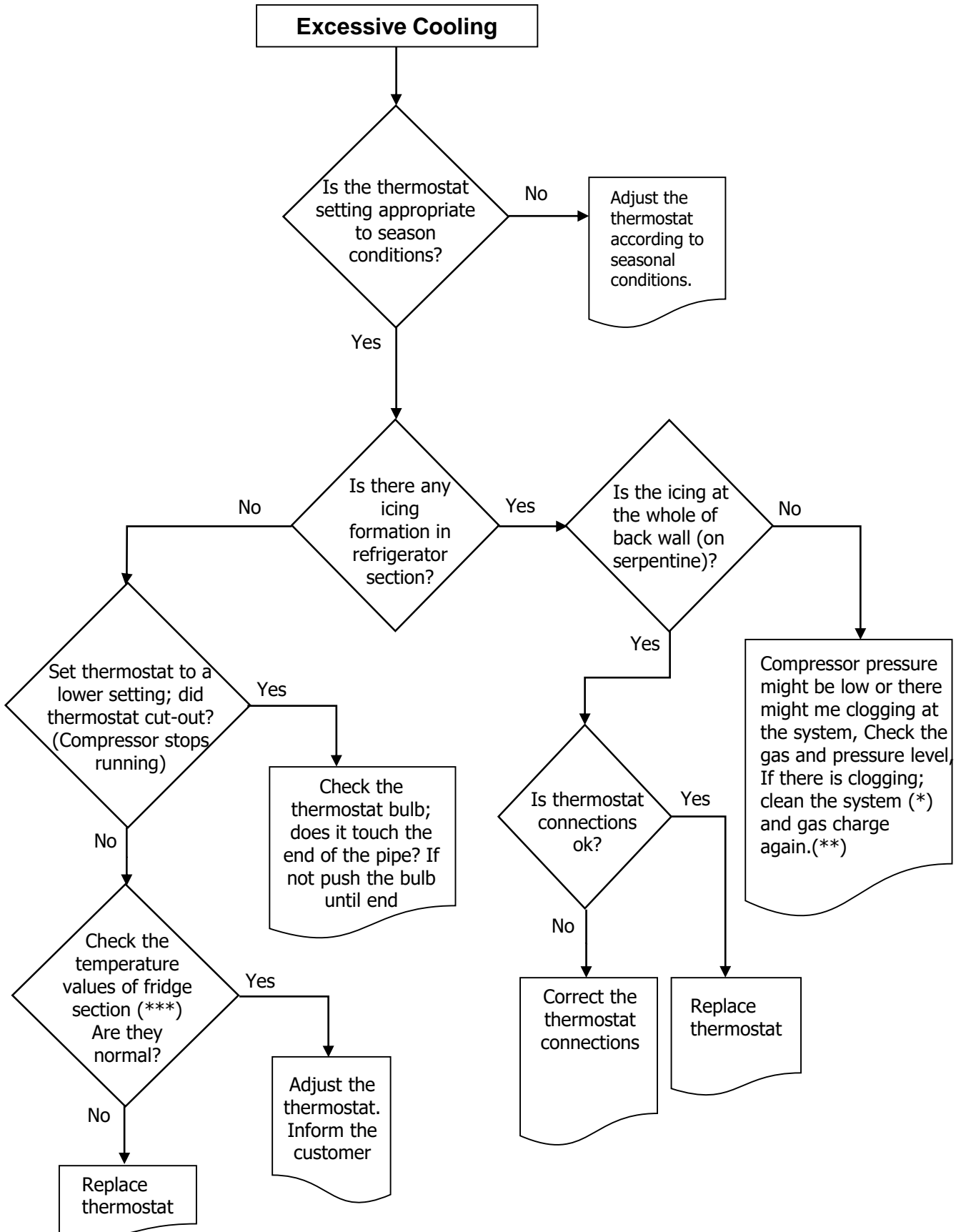
No/Insufficient cooling



(*) Check all pipes, tubes and welding points against gas leakage. (**) Before charging gas to system, change dryer and vacuum at least 30 minutes, then charge the system with amount written on label (***) Compressor primary winding should be around 10 Ω and secondary around 15 Ω (at 25°C ambience temp.)

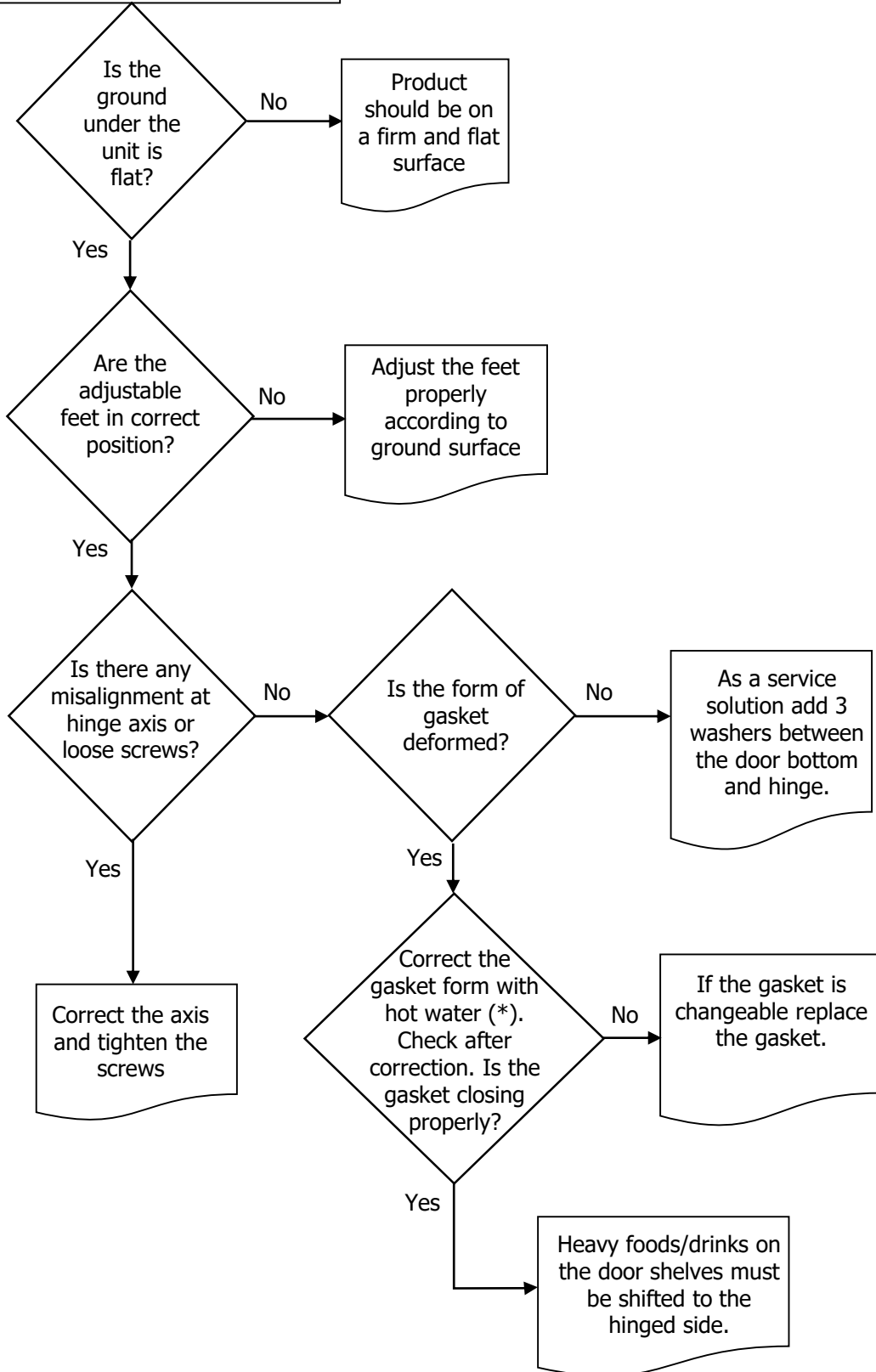
TROUBLE-SHOOTING CHART

Excessive Cooling



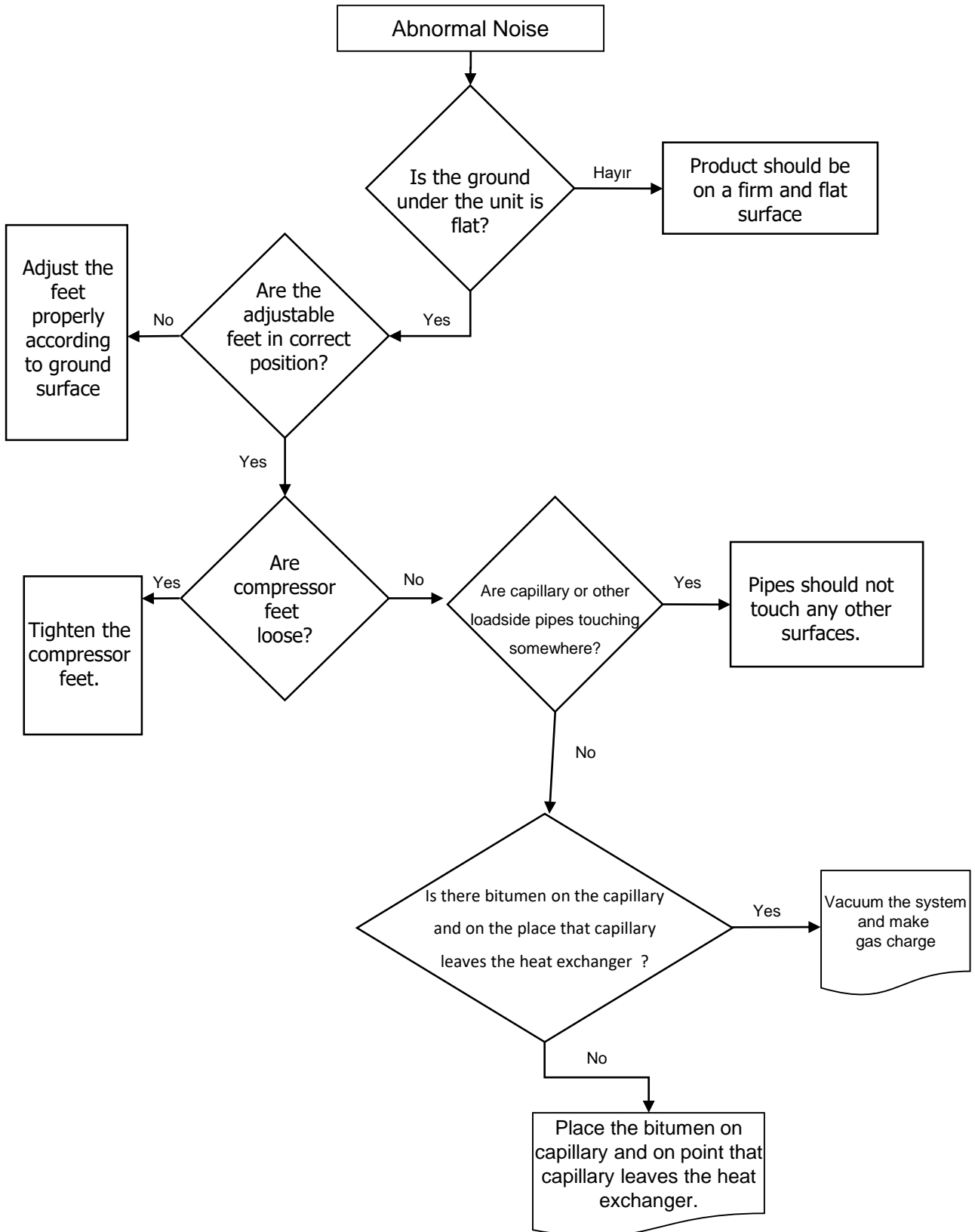
TROUBLE-SHOOTING CHART

Door/Gasket Adjustment



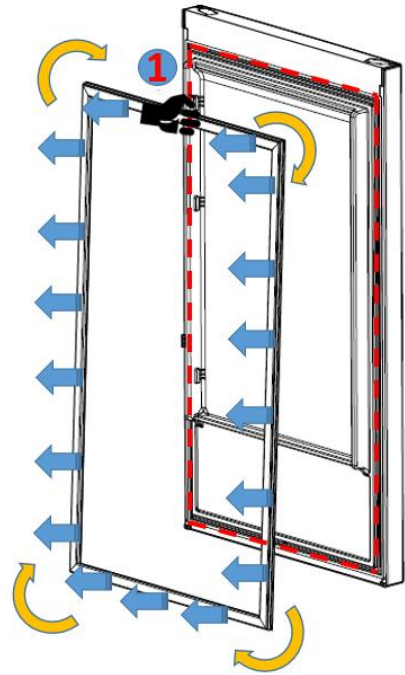
(*) Correct the gasket form by the help of hot water and hair dryer.

TROUBLE-SHOOTING CHART

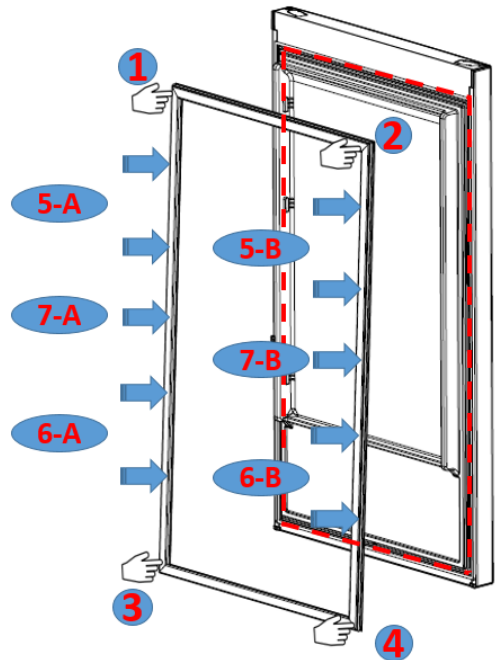


Replacement of Door Gasket

Pull the gasket towards starting from top right corner
 Slowly pull the rest of the gasket.
 Completely remove the gasket from door.



Check the replacement gasket form
 Starting with upper right corner, press on the gasket until it fits to its place..
 Place the other sides of the gasket with the help of your thumb



After the replacement check if there any non-fitting point on the gasket. Also check if there any opening at the gasket while the door is closed. If so that might cause condensation/icing or insufficient cooling/freezing. To prevent this soften the form of the gasket with the help of a hair dryer or hot water and make sure that all points are closing perfectly.

