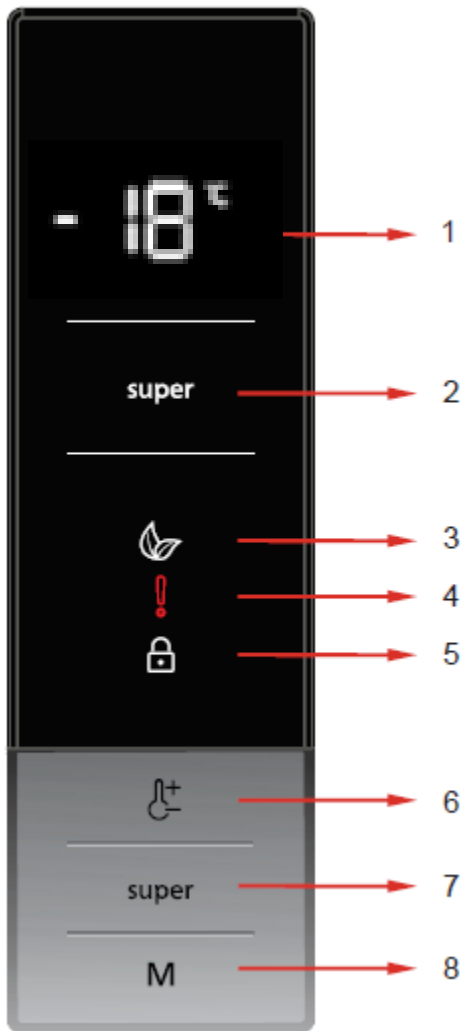


Display and control panel



Use of control panel

1. It is freezer set value screen.
2. It is super cooling indicator.
3. It is economy mode symbol.
4. It is alarm symbol
5. It is child-lock symbol.
6. It enables the setting value of cooler to be modified if desired. Cooler maybe set to -24,-22,-20,-18,-16°C,
7. It enables the super mode.
8. It enables the economy mode .

Super Cool Mode



How would it be used?

- Press super button until «super» symbol will be seen on the screen. Buzzer will sound beep beep. Mode will be set.
- «super» symbol will light during the mode.

During this mode:

- Super freeze mode can be cancelled by the same operation of selecting.

Economy Mode



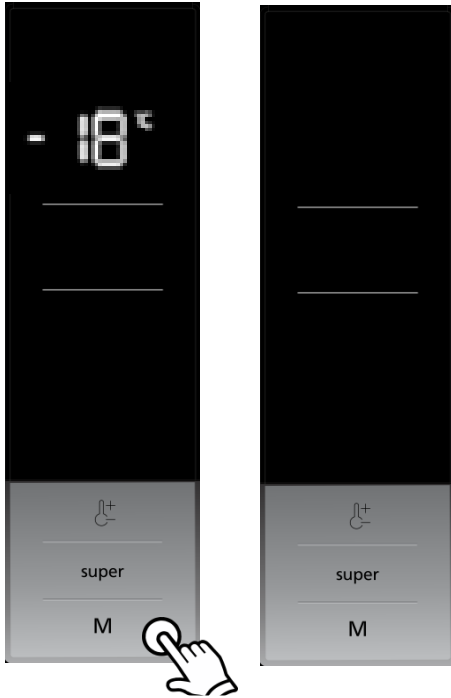
How would it be used?

- Push "mode button" until «economy» symbol will be seen on the screen..
- If no pressed any button for 1 sec. Mode will be set.
- Cooler temperature segments will show "E".

During this mode:

- Freezer may be adjusted. When economy mode will be cancelled, the selected setting values will proceed.
- Super freeze mode can be selected. Economy mode is automatically cancelled and the selected mode is activated.
- To cancel, you will just need to press on mode button.

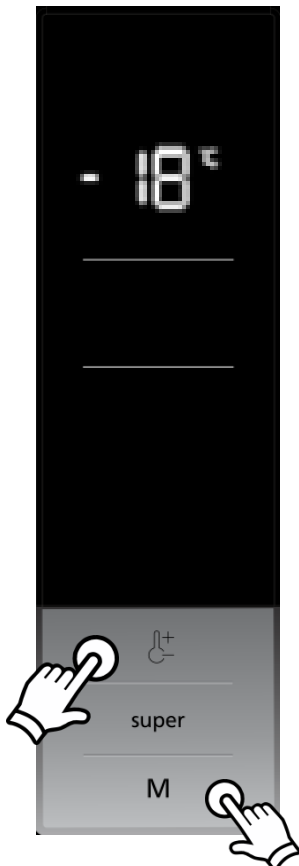
Screen Saver Mode



How to use?

- This mode will be activated when you press on mode button for 5 seconds.
- If pressed on no button in 5 seconds when the mode is active, lights of the control panel will go off.
- If you press any button when lights of control panel are off, the current settings will appear on the screen, and then you can make the adjustment as you want. If you neither cancel screen saver mode nor press on any button in 5 seconds, the control panel will go off again.
- To cancel screen saver mode press on mute button for 5 seconds again.
- When screen saver mode is active you can also activate child lock.
- If you do not press any button for 5 seconds after activating child lock, the lights of the control panel will go off. Then, you can view the previous settings and that child lock symbol is active when you press any button, and you can cancel child lock as is described in the instruction of that mode.

Demo Mode



This mode will be used for only sales points by salesman to show functions & modes to customer without operating components as a compressor, fan, motor..Etc.

Entering Demo mode:

Firstly the power is on, secondly within 1 minute user will push Mode and Freezer Set Button 3 seconds at the same time, Then appliance will go on "demo function". «dE» will light on cooler set value screen for 1 second, and «on» will light for 1 second and off. Every 20 seconds this operations will occur.

All functions can be adjusted to show how they are adjusted to the customer.

Canceling Demo mode:

For cancelling; Same operation will be used. If user will push Mode and Freezer Set Button at the same time, demo function will be cancelled.

When appliance is Demo mode; if plug is removed or there is an electricity breakdown; demo mode will continue with current settings after user plug into or electricity breakdown finish.



371E IMD DISPLAY



THE VARIOUS FUNCTIONS AND POSSIBILITIES

- It is not recommended that you operate your fridge in environments colder than 10°C in terms of its efficiency.
- Temperature adjustments should be made according to the frequency of door openings and the quantity of food kept inside the fridge.
- Do not pass to another adjustment before completing an adjustment.
- Your fridge should be operated up to 24 hours according to the ambient temperature without interruption after being plugged in to be completely cooled. Do not open doors of your fridge frequently and do not place much food inside it in this period.
- A 5 minute delaying function is applied to prevent damage to the compressor of your fridge, when you take the plug off and then plug it on again to operate it or when an energy breakdown occurs. Your fridge will start to operate normally after 5 minutes.
- Your fridge is designed to operate in the ambient temperature intervals stated in the standards, according to the climate class stated in the information label. We do not recommend operating your fridge out of stated temperatures value limits in terms of cooling effectiveness.

Climate Class	Ambient (°C)
T	16 to 43
ST	16 to 38
N	16 to 32
SN	10 to 32



371E IMD DISPLAY



SPECIAL PROGRAMS

Low voltage function

Cooler number segment shows «--», buzzer sounds.

*** Freezer sensor open short circuit**

Blink Sr Symbol, buzzer sounds.

*** Defrost sensor open short circuit**

In normal mode, RDS sensor defect will not be shown.

*** Ambient sensor open short circuit**

In normal mode, AT sensor defect will not be shown.

*** Compressor defect**

Blink Sr Symbol, buzzer sounds.

*** Door open alarm**

Door alarm sounds when the door opens more than 2 minutes continuously.

Entering Service Mode: Push and hold Super and Mode button together for 5 seconds.
When user enters to Service Mode,



Freezer sensor is Short or Open



Defrost sensor is Short or Open



AT sensor is Short or Open



Compressor Defect



Defrost Heater Defect



Low Freezer Defect



1. Push of Mode Button;

This mode is starting mode and 'Economy' symbol in display will blink during mode.

"4" will light when R&Su heardet will b ON

"3" will light when Fan is ON

"1" will light when Compressor is ON

2. Push of Mode Button;

Starting manual defrost and 'Super Freeze' symbol will blink during mode.

3. Push of Mode Button;

Service man can see actual temperatures on this screen.

With SET button, service man can toggle between sensor values.

The sensor values are indicated in the following order;

1-Freezer sensor values

3-Defrost sensor values


4-AT sensor values

4. Push of Mode Button;

The door open/close position on this mode. So, service man can check door switch working or not.

If door is open, «ON» will be seen on set value screen, if door is close, «OF» will be seen on set value screen.

Low voltage error on display






DEFECT TYPE	DETAILS	USER MODE REACTION
Low voltage	Power supply < 170	

Cooling error on display

NOTE: To prevent the wrong alarms, this alarm status is disabled on following conditions:

- During the first 6 hours after the product was firstly connected.
- During the defrost period
- During the first two hours after a defrost
- During the first 2 hours that one of the doors was open.

PRIORITY OF ERROR ON DISPLAY

	USER MODE REACTION	SERVICE MODE REACTION
Compressor Defect	SR	
Sensor Defect (Short-Open)	SR	 Cooler Sensor is Short or Open  Defrost Sensor is Short or Open  AT Sensor is Short or Open
F sensor > 5°C	SR	



371E IMD DISPLAY



User and Service Mode Error Message

After January 2020

Sensor Faults;

SENSOR	FREEZER SET VALUE	COOLER SET VALUE
(1) Freezer (Short-Open)	E	01
(3) Defrost (Short-Open)	E	03
(4) AT sensor	E	04

Component defect on display

DEFECT TYPE	FREEZER SET VALUE	COOLER SET VALUE
Compressor Defect	E	06
Defrost Heater Defect	E	07

Low voltage error on display

DEFECT TYPE	FREEZER SET VALUE	COOLER SET VALUE
Low voltage	E	08

Cooling error on display

DEFECT TYPE	FREEZER SET VALUE	COOLER SET VALUE
LF (Low Fre.)	E	09

1. Hold the top hinge cover and remove it toward that direction (Picture-1)



Picture-1

2. Unscrew the screws fixing the top hinge and remove it. (Picture-2)



Picture-2

3. Displace the door (Picture-3)



Picture-3

4. Unscrew the adjustable foot (Picture-4)



Picture-4

5. Unscrew the bottom hinge screws. (Picture-5)



Picture-5

6. Unscrew the bottom hinge pin and screw it to other hole. (Picture-6)



Picture-6

7. Screw the bottom hinge to the left bottom side of refrigerator. Screw the adjustable foot there. (Picture-7)



Picture-7

8. Unscrew the two screws fixing stopper and stopper support plate under the door. After that screw the other side. (Picture-8)



Picture-8

9. Remove the socket cover-right of the door (Picture-9.1)

Remove the display socket (Picture-9.2)

Please use the socket cover to hidden other housing (Picture-9.3 / Picture-9.4)



Picture-9.1



Picture-9.2



Picture-9.3



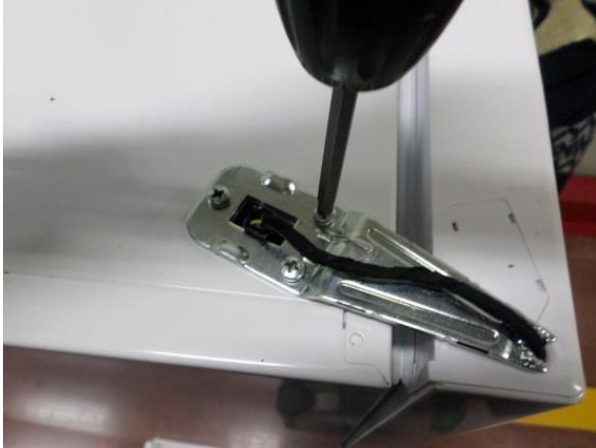
Picture-9.4

10. Remove the hinge cover on the top panel and replace to other side.(Picture-10)



Picture-10

11. Place the door to the bottom hinge and screw the top hinge to the top panel. (Picture-11)



Picture-11

12. Place the top hinge cover. (Picture-12)



Picture-12



Warning: The plug must be pulled out before the display is removed.

1. Display can be removed with the disassembly tool. Do not use any sharp objects to remove the display.
2. Disassembly tool code is **42152193** (Picture-1)



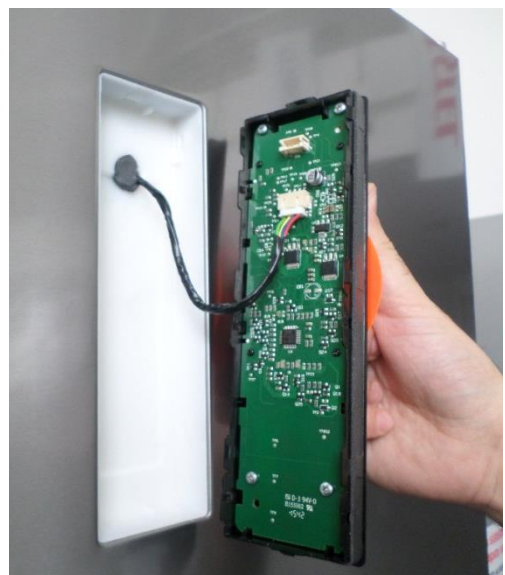
Picture-1

3. Place and fix the disassembly tool on to display and pull to take out the display. (Picture-2)

4. Take out the display cable socket. (Picture-3)



Picture-2



Picture-3



Warning: Make sure the unit is unplugged.

1. Remove the refrigerator glass shelves and the flap cover supports left and right. (Picture-1 / Picture-2)



Picture-1



Picture-2

2. Remove the plugs by pulling them under the base with a pointed device to remove the screw plugs and remove the screws. (Picture-3-4-5)



Picture-3



Picture-4



Picture-5

3. Keep the air duct by the left side or right side and stretch it. Get rid of the nails. (Picture-6)



Picture-6

1. Remove the fan motor connector, unscrew the fan motor fixing screws and displace the fan motor and remove the propeller. (Picture-1 / Picture-2)



Picture-1



Picture-2

2. Displace the details on the fan motor box. (Picture-3)



Picture-4



Fan Motor Components

1. After remove the fan motor connector, airduct can be displaced (Picture-1 / Picture-2 / Picture-3)



Picture-1

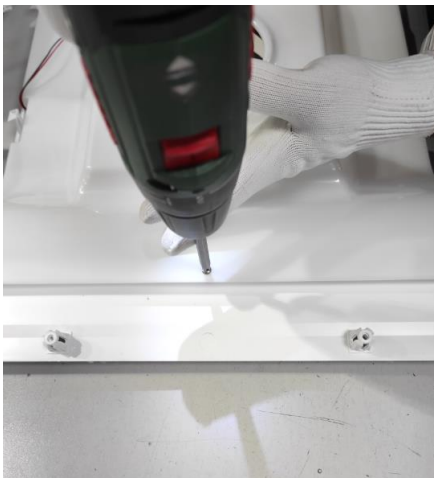


Picture-2

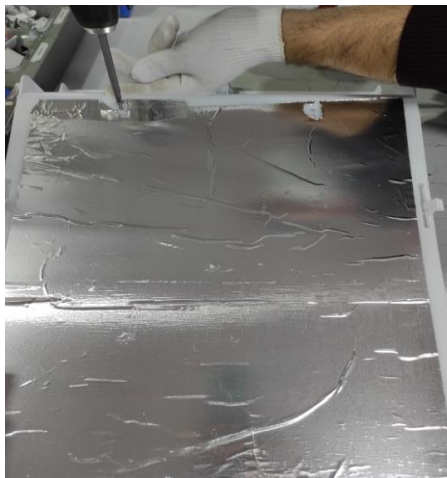


Picture-3

2. Unscrew the airduct fixing screws and Get rid of the nails carefully. (Picture-4 / Picture-5 / Picture-6)



Picture-4



Picture-5



Picture-6

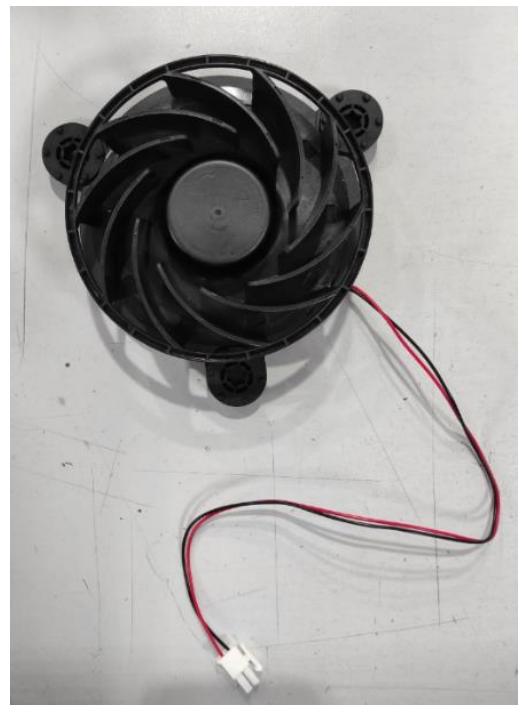
3. After remove the airduct cover, to displace the fan motor get rid of the the nail by using needlenose pliers. (Picture-7 / Picture-8 / Picture-9)



Picture-7



Picture-8

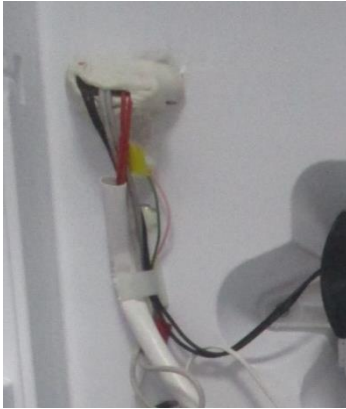


Picture-9



Warning: This process needs gas deflation, gas re-charging and welding processes so its need to be done by trained professionals.

1. Take out the fin evap heater (blue) connector and remove the bitumen covering the tubes.
(Picture-1 / Picture-2)



Picture-1



Picture-2



Warning: Before cutting the tube follow make sure the gas is evacuated.

2. To take out the evaporator, tubes need to be cut with oxygen welding. (Picture-3 / Picture-4)
Remove the evaporator by pulling forward in a horizontal direction. Do not push it up or down.
You may broke the fixing plastics.



Picture-3



Picture-4

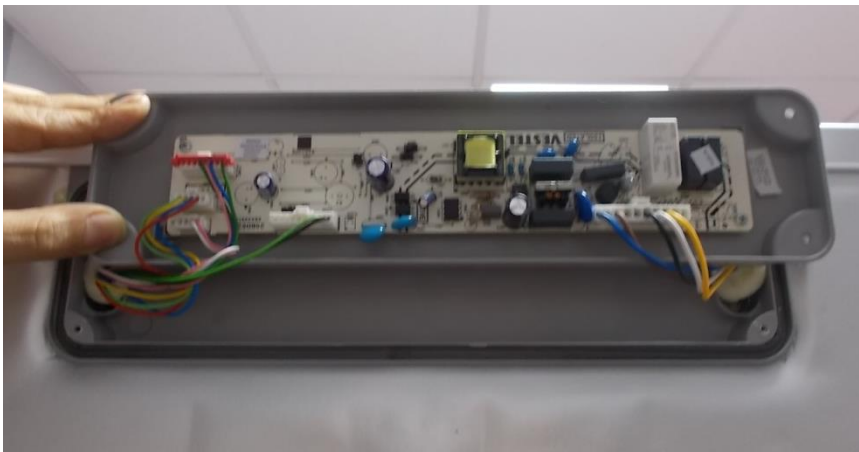
 **Warning: The plug must be pulled out before the mainboard group is removed.**

1. Unscrew the screws which are fixing the main board cover. (Picture-1)



Picture-1

2. Pull the mainboard slightly forward and disconnect all the connectors and then replace it. Finally, place the mainboard cover and screw it. (Picture-2)



Picture-2

Remove the freezer sensor cover by pulling forward and disconnect sensor connector.
(Picture-1 / Picture-2)



Picture-1



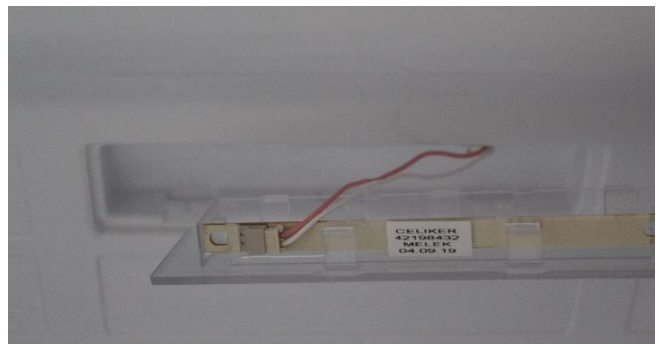
Picture-2



Warning: Pay attention not to damage to the sensor cover details!

ASSEMBLE & DISASSEMBLE LED

Remove the led cover by pulling forward and disconnect the connector.



Barcode and Serial Number Explanation:

Vestel refrigerator serial numbers are consist of 22 digits.

