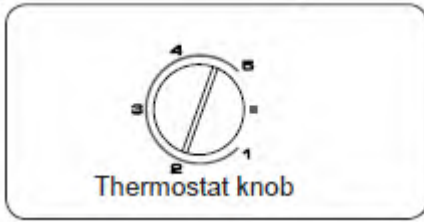


INSTRUCTIONS



The thermostat automatically regulates the temperature inside the cooler and freezer compartments. Refrigerator temperatures can be obtained by rotating the knob to higher numbers; 1 to 3, 1 to 5 or SF
(Maximum numbers on the thermostat depends on your product.)

Important note: Do not try to rotate the knob beyond position 1, it will stop your appliance from working.

Thermostat settings:

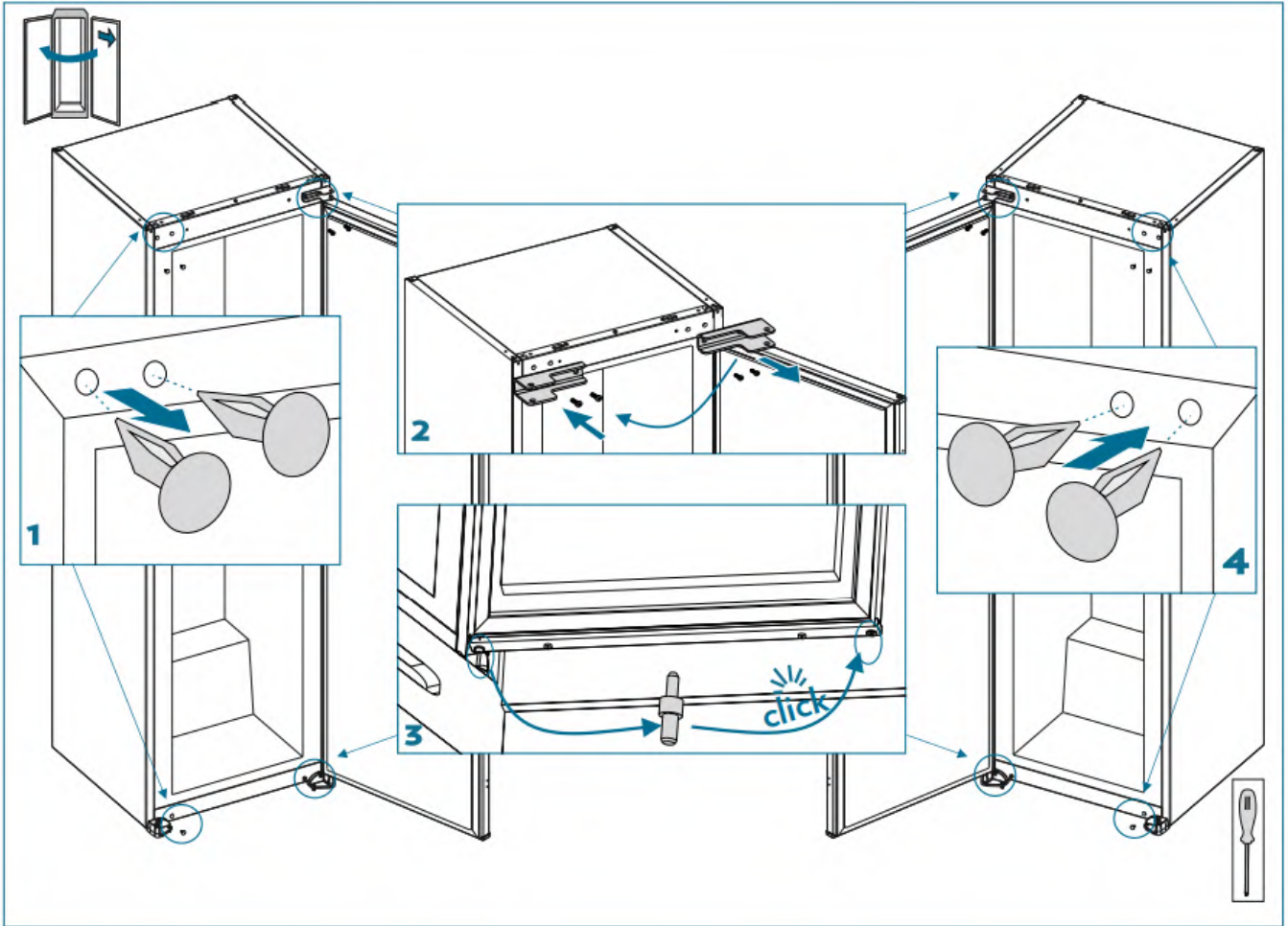
1 – 2 : For short-term storage of food **3 – 4 :** For long-term storage of food

5 : Maximum cooling position. The appliance will work longer. If required, change the temperature setting.

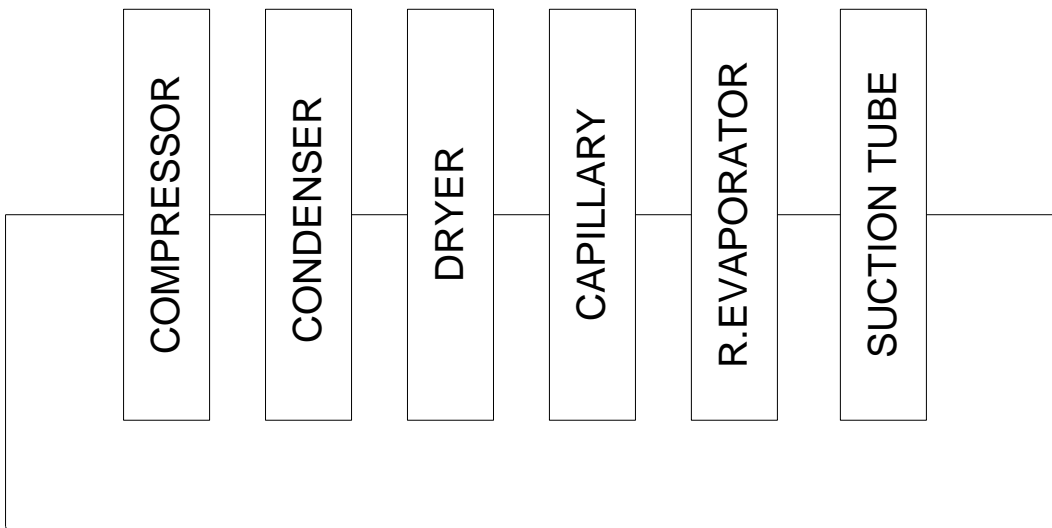
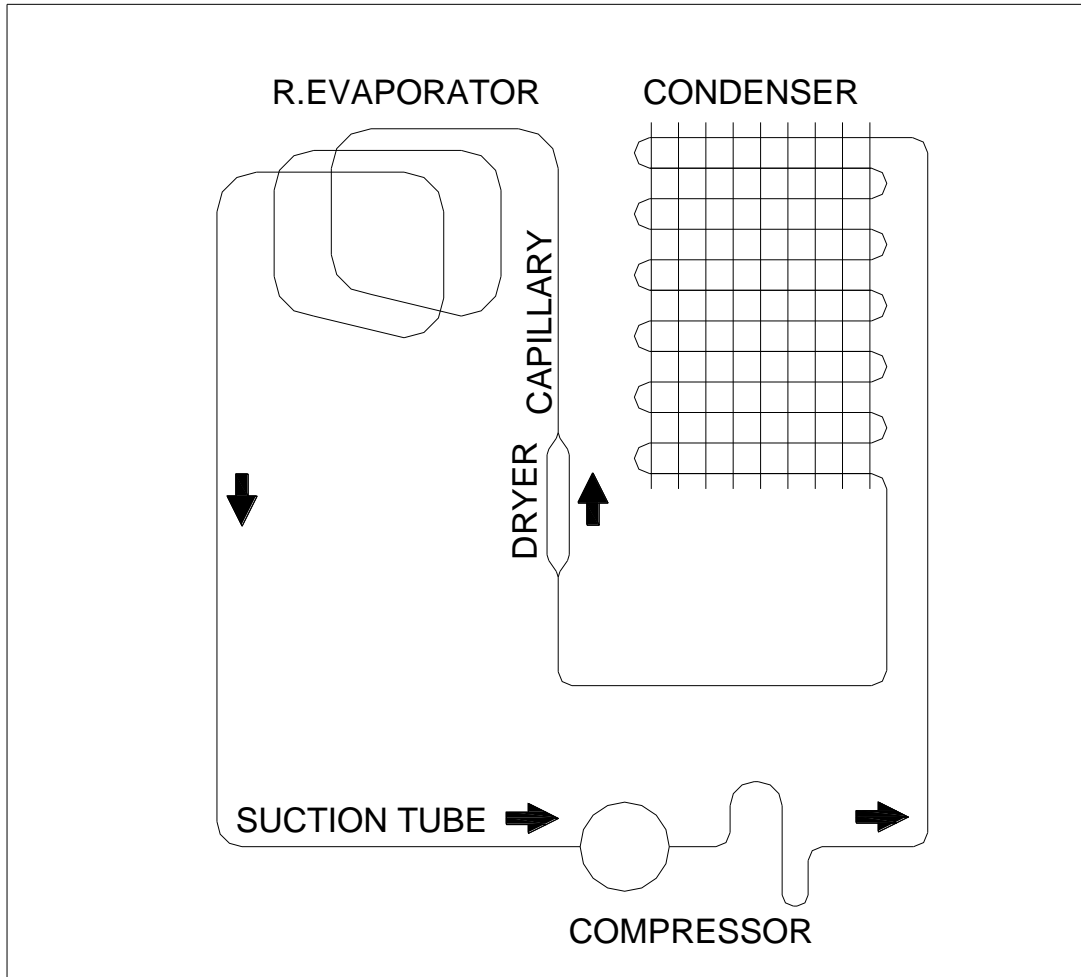
If device has SF position:

- Turn the knob to SF to freeze fresh food quickly. In this position, the freezer compartment will operate at lower temperatures. After your food freezes, turn the thermostat knob to its normal use position. If you do not change the SF position, your appliance work will automatically return to its last used thermostat position according to the time indicated in the note. Return the thermostat switch to the SF position and return it to normal use according to the time indicated in the note. If the thermostat switch is in the SF position when your appliance is first started, your appliance work will automatically return to the operation in the thermostat-3 position according to the time indicated in the note.

Changing The Door Swing Direction



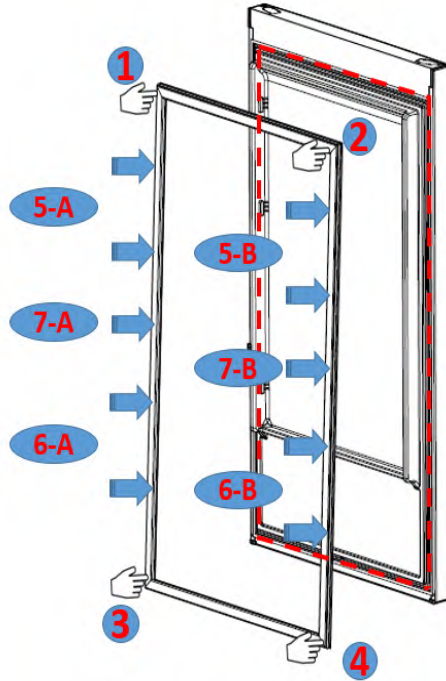
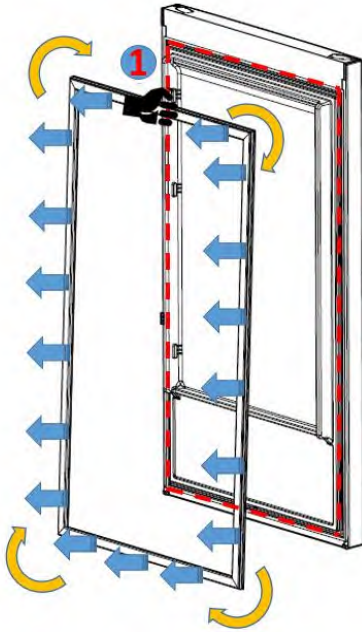
REFRIGERANT CYCLE DIAGRAM



Replecament of Door Gasket

Pull the gasket towards starting from top right corner. Slowly pull the rest of the gasket. Completely remove the gasket from door.

Check the replacement gasket form Starting with upper right corner, press on the gasket until it fits to its place.. Place the other sides of the gasket with the help of your thumb



After the replacement check if there any non-fitting point on the gasket. Also check if there any opening at the gasket while the door is closed. If so that might cause condensation/icing or insufficient cooling/freezing. To prevent this soften the form of the gasket with the help of a hair dryer or hot water and make sure that all points are closing perfectly.

