

A- Changing The Door Swing Direction to Right Hand

1- Unscrew the two screws fixing the top hinge (Fig-1) and remove the door. (Fig-2)



Figure 1



Figure 2

2- Remove the bottom hinge pin (Fig-3) and insert it to the left side foot. (Fig-4)



Figure 3



Figure 4

3- Remove the top hinge screw caps (big) on the left side (Fig-5) and insert them to the right side. (Fig-6) (You can find the new caps in the user manual bag)



Figure 5



Figure 6

4- Unscrew the pin of the hinge from Hole 1, rotate the top hinge by 180° and screw the pin to Hole 2. (Fig-7)

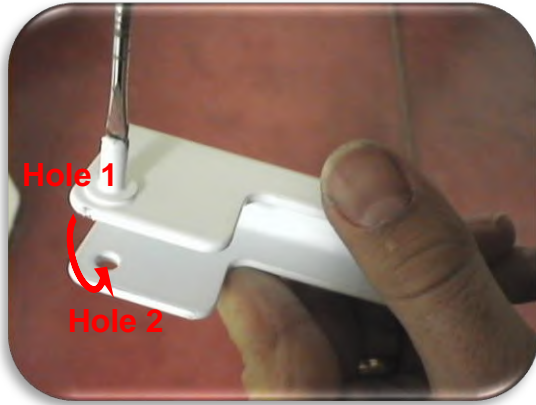


Figure 7

5- Assemble the freezer door and screw the top hinge to the left side. (Fig-8)



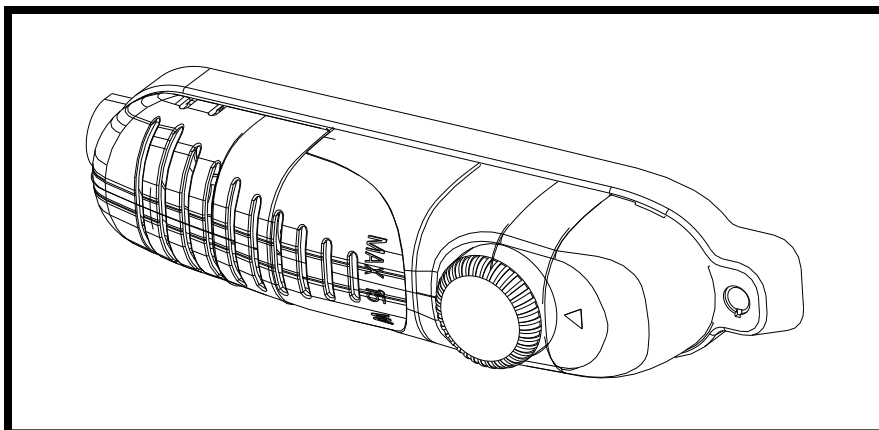
Figure 8

B - Changing The Thermostat :

- 1) Remove the lamp cover and unscrew the fixing screw.
- 2) Remove the screw cap and unscrew the fixing screw.
- 3) Remove the thermostat box by pulling it and disconnecting the wire connector.
- 4) Remove the thermostat knob by pulling forward. Loosen the nut fixing the thermostat.
- 5) Pull out the thermostat bulb from the housing.
- 6) Replace the thermostat with a new one and assemble the thermostat box following the steps backwards.

C - Thermostat Knob :

- 1) This knob is used to control the temperature of the freezer and refrigerator parts automatically. It can be set to any value between “0” and “5” positions.
- 2) “0” position indicates that the thermostat is “off”. The refrigerator is “off” on this setting.
- 3) By turning the knob between “1” and “5”, you can increase or decrease the cooling degree.
- 4) The refrigerator is designed to get optimum performance when the thermostat knob is set between position “2” to “4”.



REFRIGERANT CYCLE DIAGRAM

