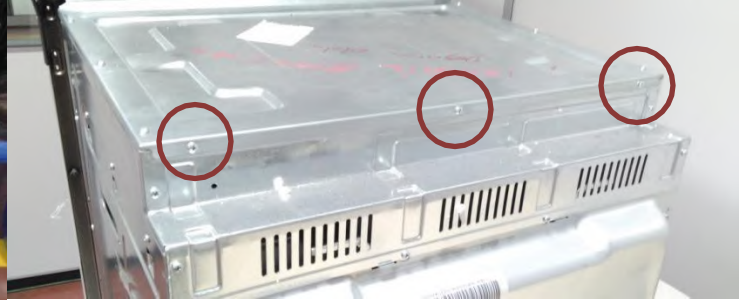
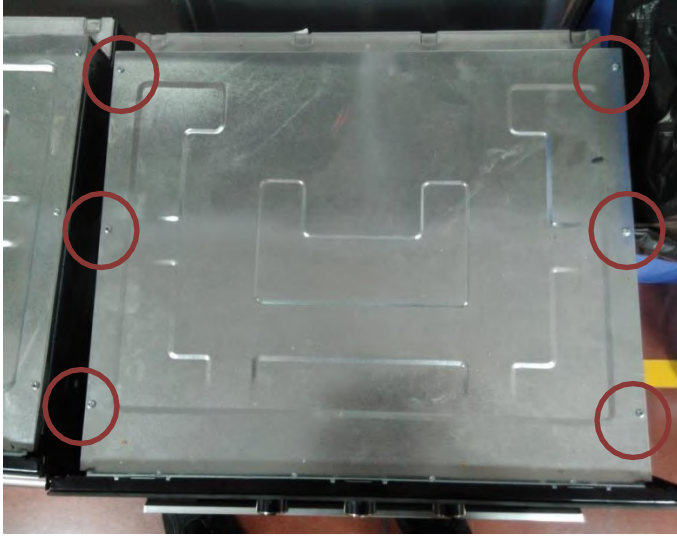


BUILT IN OVEN SERVICE MANUAL CONTENTS

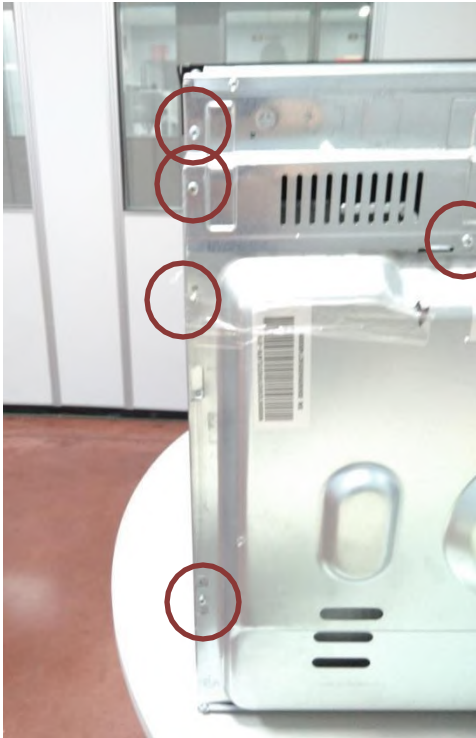
1. Upper and Rear Panel	2
2. Side Panel	3
3. Bottom Panel	4
4. Front Panel	5
5. Full Glass Doors	7
6. Flat Oven Doors	11
7. Fan Cover	15
8. Catalytic Shelf	16
9. Cooling Fan	17
10. Upper Heater	19
11. Ring Heater	20
12. Bottom Heater	21
13. Oven Light Group	23
14. Fan Motor	24
15. Turnspit Motor	25
16. Steam Unit	27
17. Error Codes	

BUILT IN OVEN SERVICE MANUAL

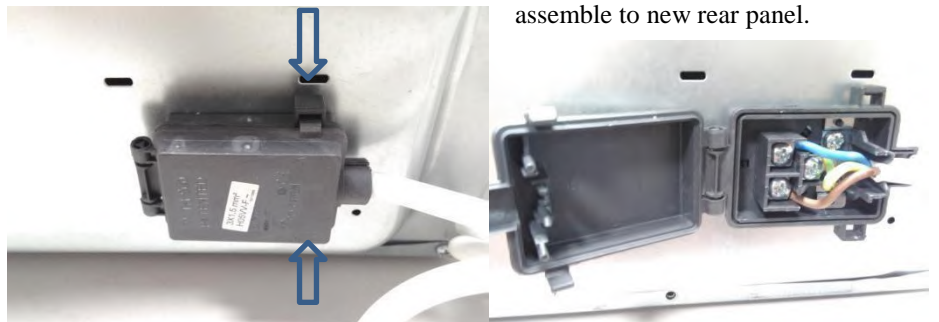
For disassembling upper panel, unscrew which are shown inside circles.



For disassembling rear panel, unscrew which are shown inside circles. Also, unscrew the screws right side of rear panel which is placed same locations



Disassemble the terminal box by pushing clips with screwdriver as below and assemble to new rear panel.

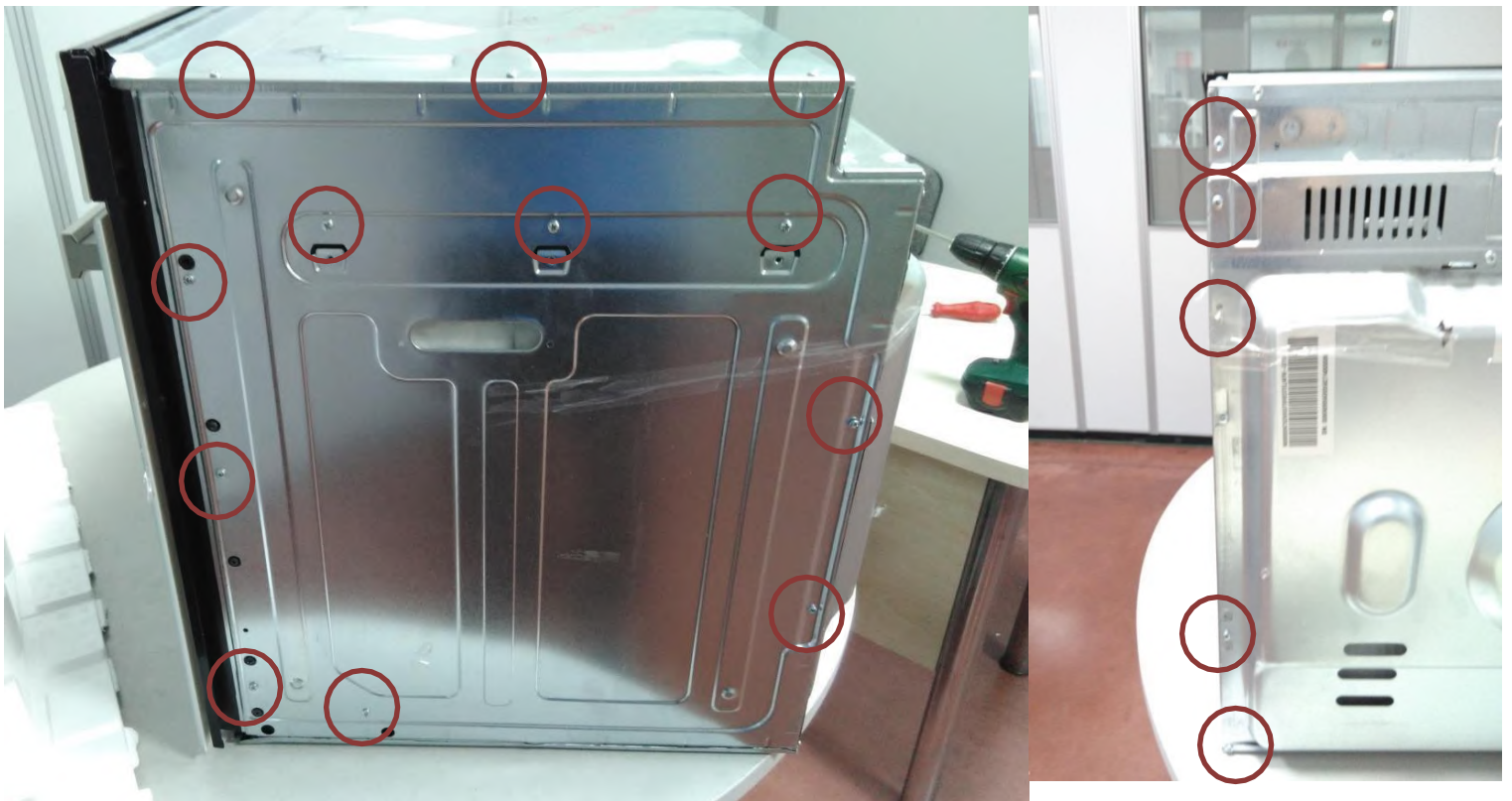


BUILT IN OVEN SERVICE MANUAL

Free the rear panel from clips.

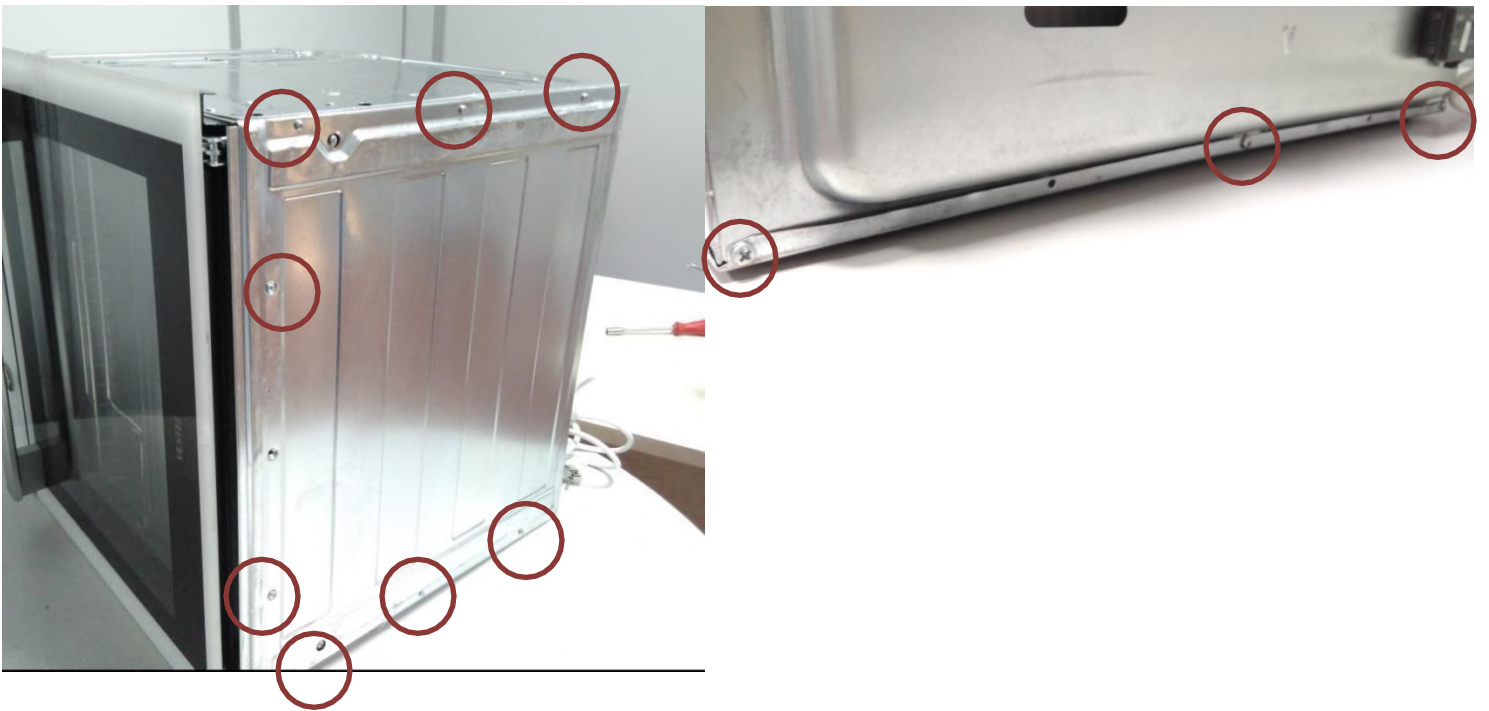


For disassembling side panel, unscrew which are shown inside circles at rear, upper and side panels.



BUILT IN OVEN SERVICE MANUAL

For disassembling bottom panel, unscrew which are shown inside circles at rear, buttom panels.



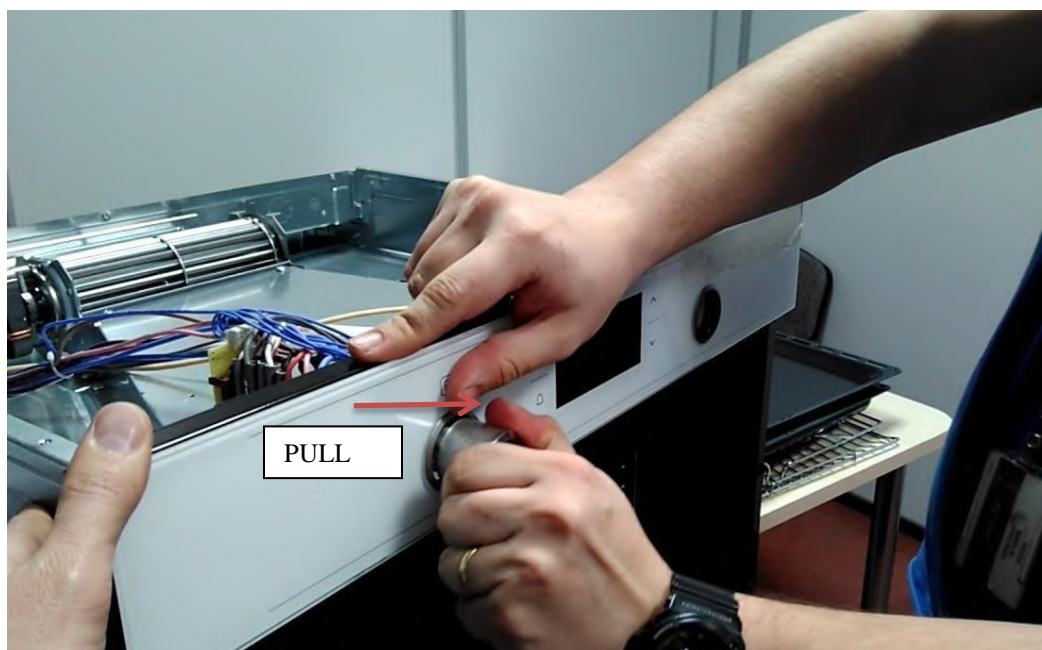
BUILT IN OVEN SERVICE MANUAL

Disassembly of Front Panel

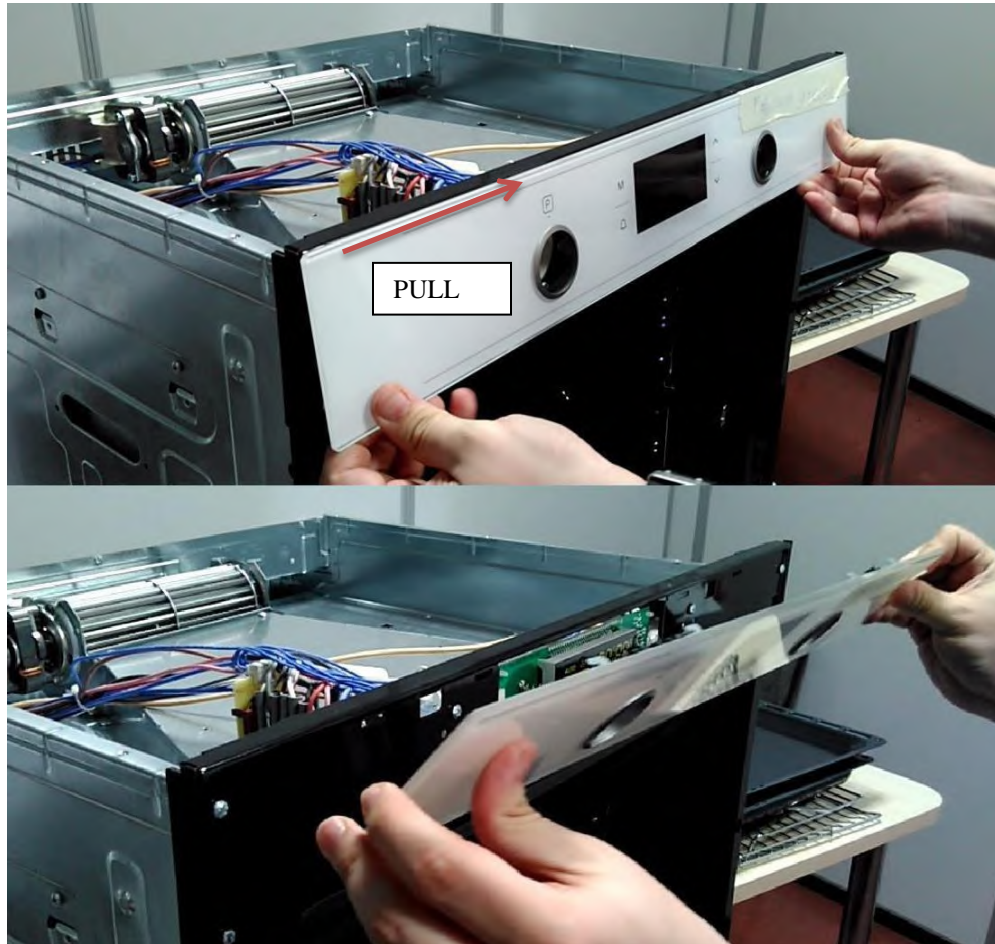
Unscrew the screws which is at bottom of front panel. Some models have 3 screws which are located, right, left and middle.



Remove the knobs by pulling.

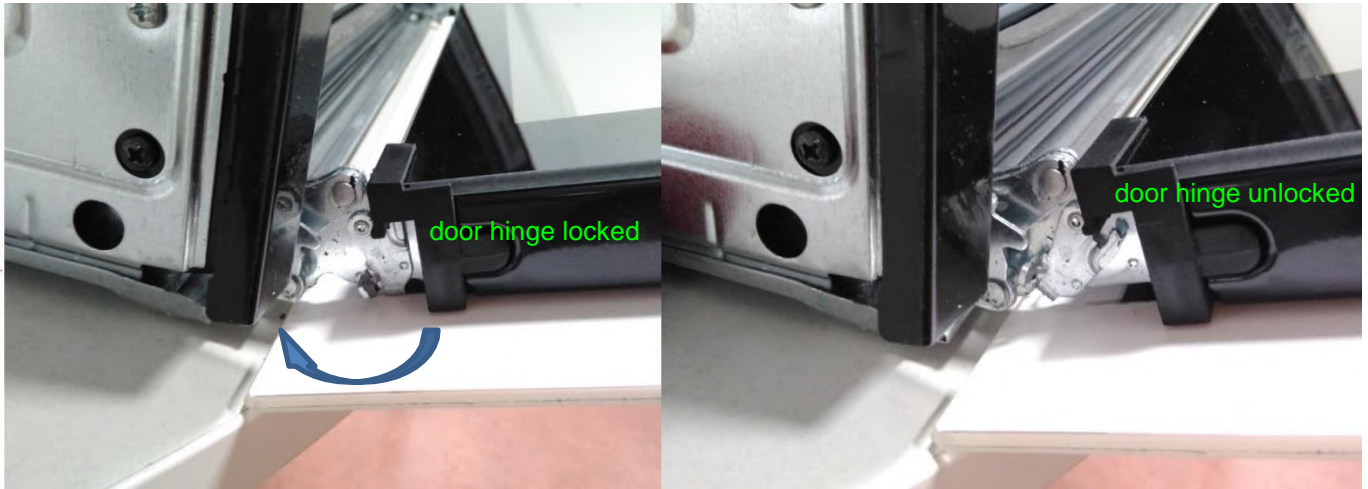


Pull to right the panel for removing the clips from inner panel.

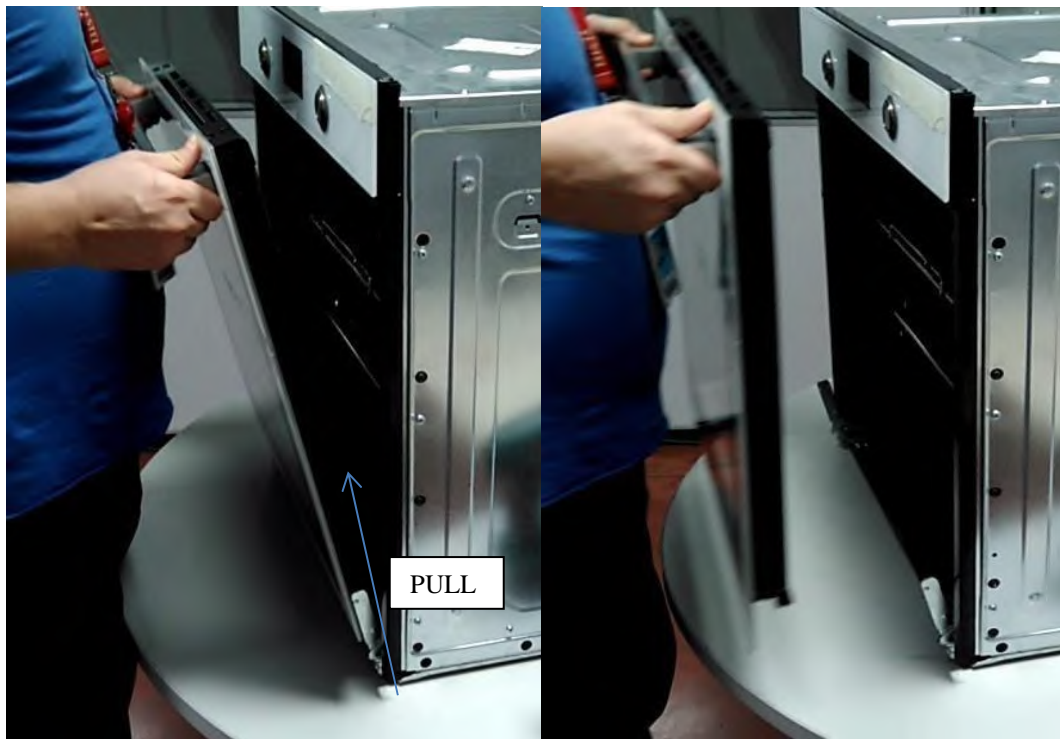


BUILT IN OVEN SERVICE MANUAL

DISASSEMBLY OF FULL GLASS DOORS

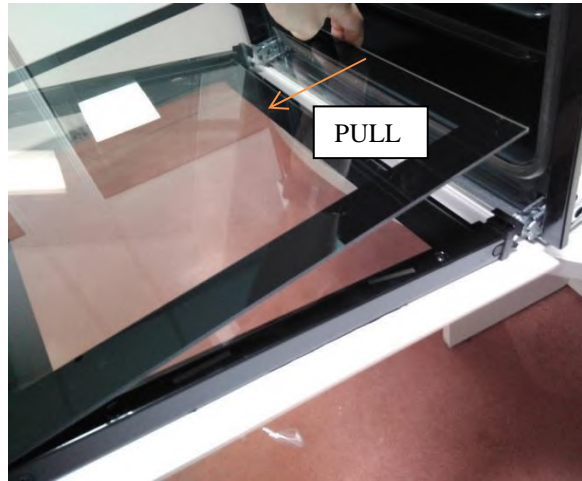


After unlock the hinge, pull and free the door as below.



BUILT IN OVEN SERVICE MANUAL

If product has easy to remove glass, remove inner glass as below.



Unscrew as below to disassemble door profile.



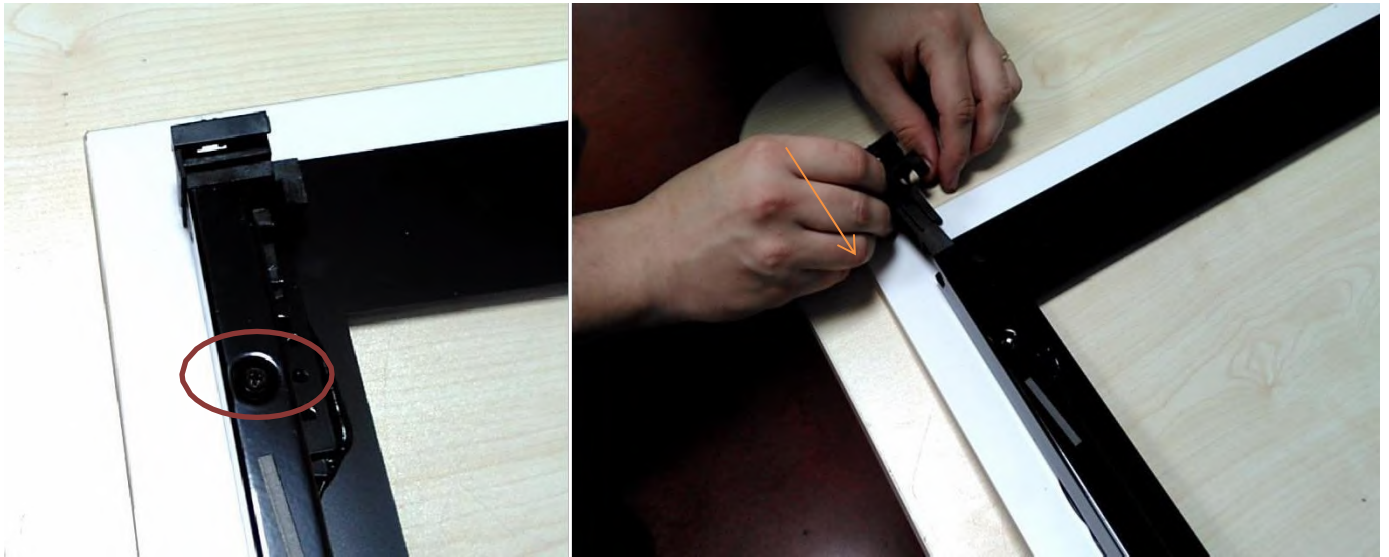
BUILT IN OVEN SERVICE MANUAL

If there is a middle glass, remove it as below. For assembly, be sure the glass fit properly.

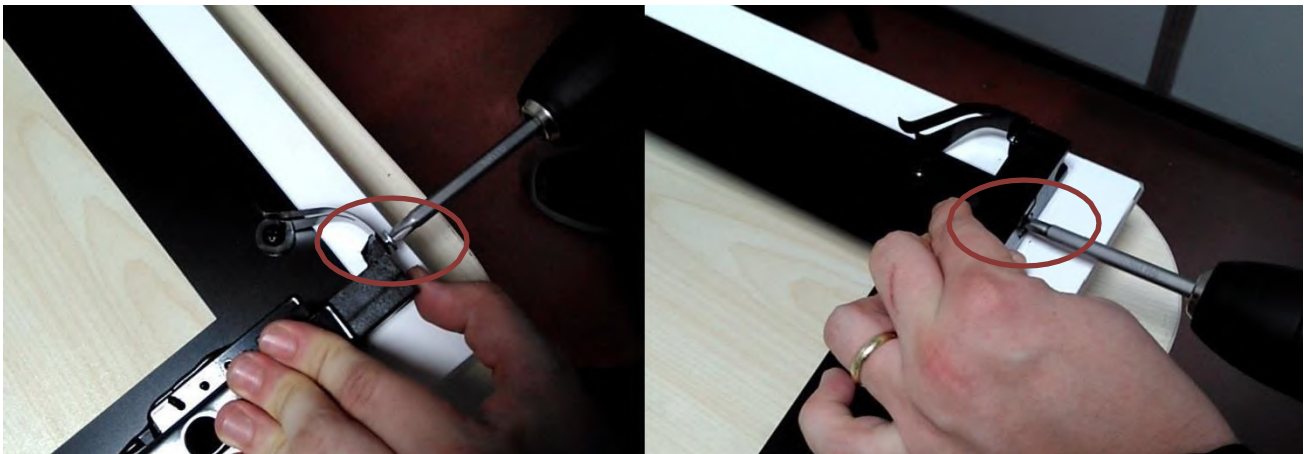


BUILT IN OVEN SERVICE MANUAL

Disassemble plastic hinge slot as below



Disassemble removable inner glass spring as below,

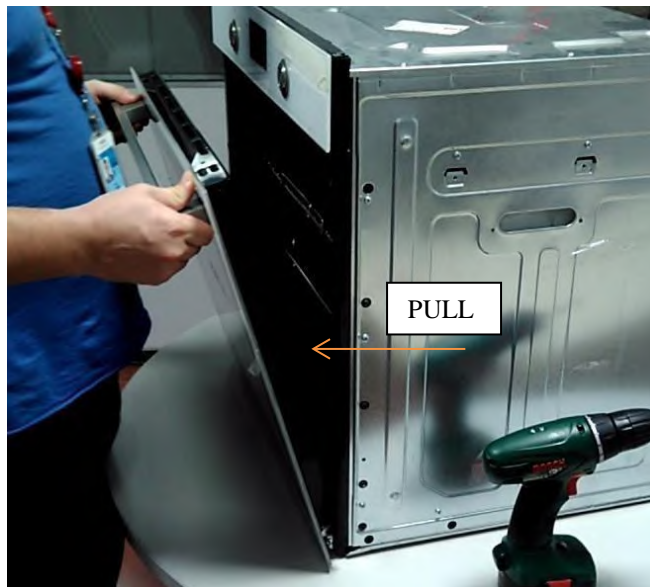


BUILT IN OVEN SERVICE MANUAL

DISASSEMBLY OF FLAT OVEN DOORS



After unlock the hinge, pull and free the door as below.

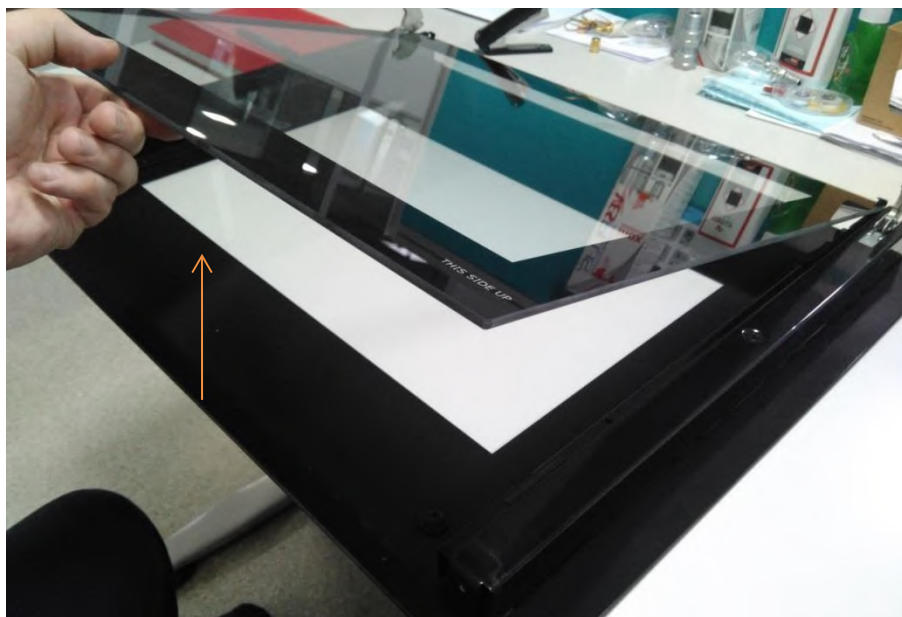


BUILT IN OVEN SERVICE MANUAL

Unscrew as below to disassemble door profile.

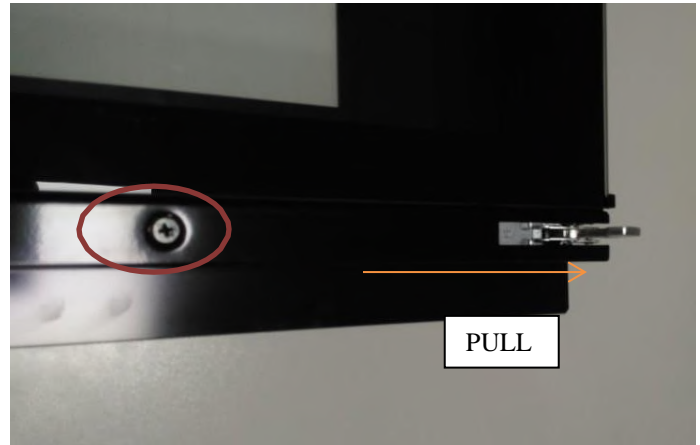


Remove inner glass as below.



BUILT IN OVEN SERVICE MANUAL

Remove hinge as below



Remove handle as below



BUILT IN OVEN SERVICE MANUAL

Changing full glass door hinges

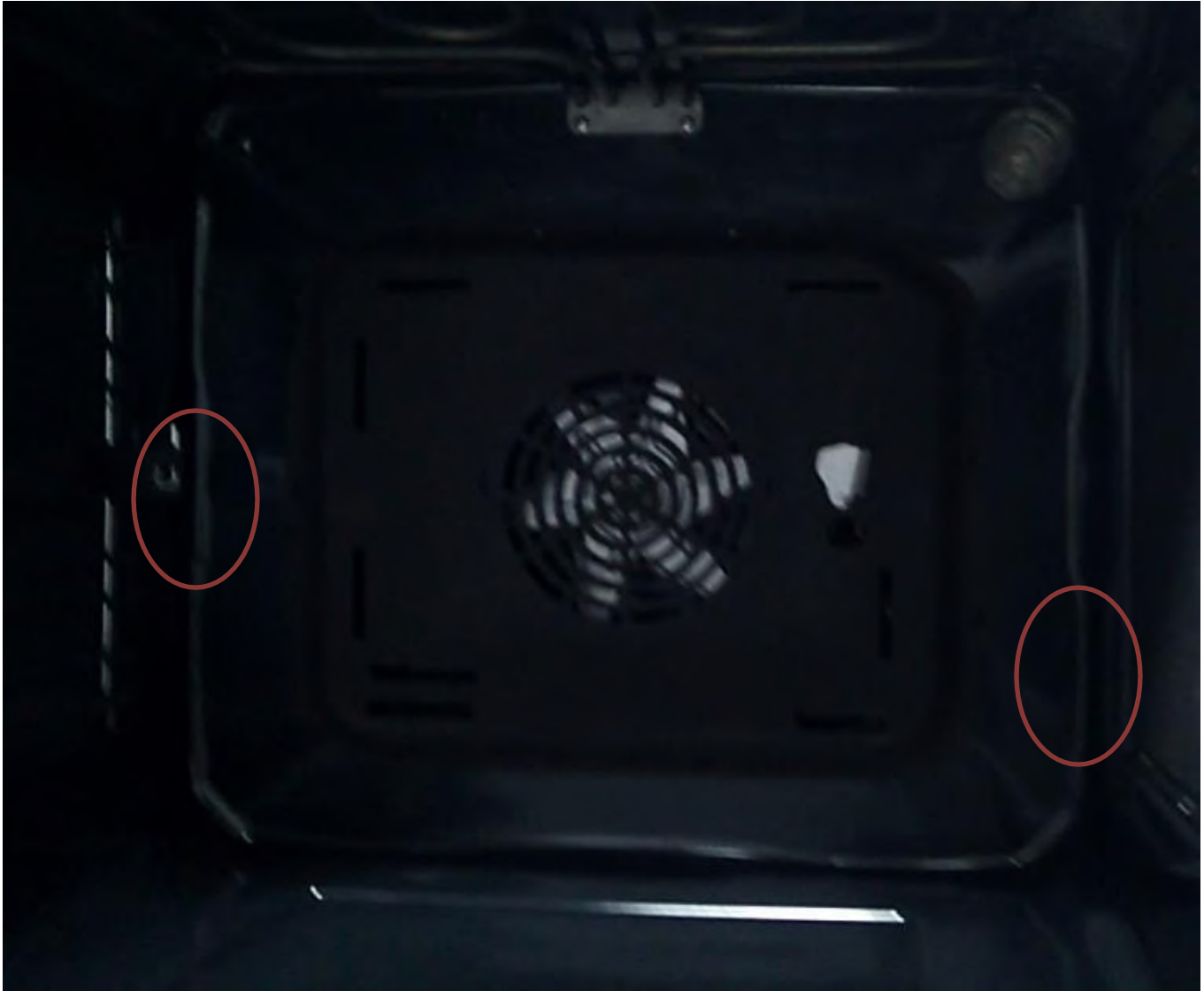


OR



Disassembly Of Fan Cover

Unscrews the screws which are shown as below



Disassembly Of Catalytic Shelf

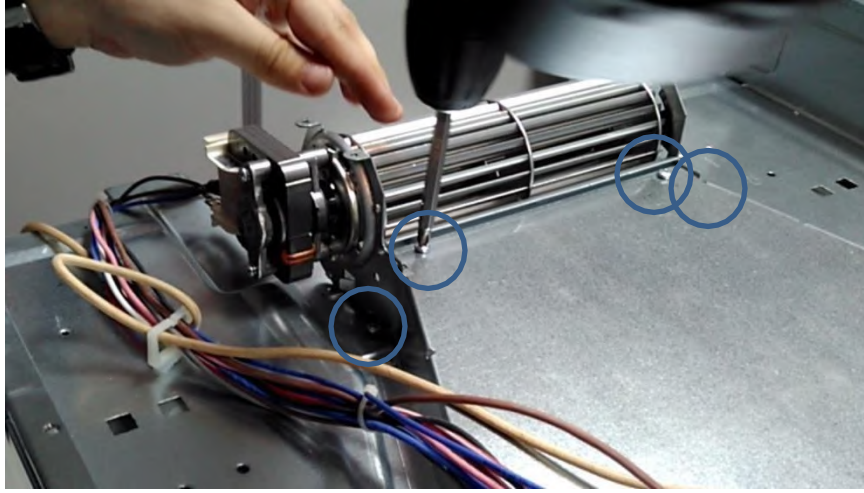
Unscrews six screws which are shown as below



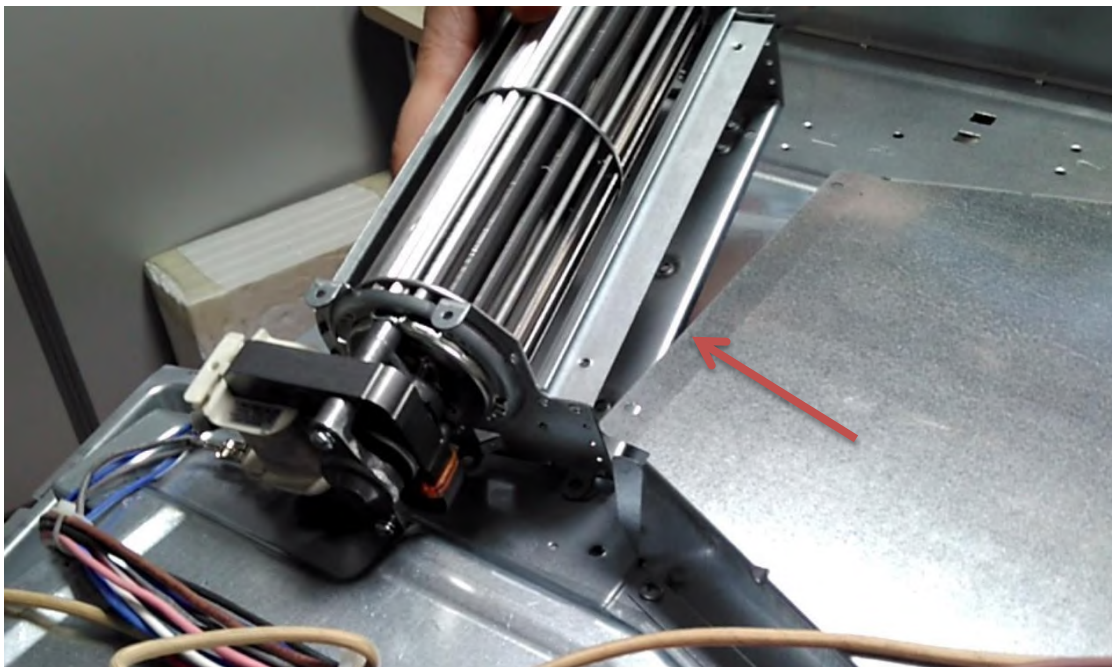
BUILT IN OVEN SERVICE MANUAL

Disassembly Of Cooling Fan

unscrew which are shown inside circles.

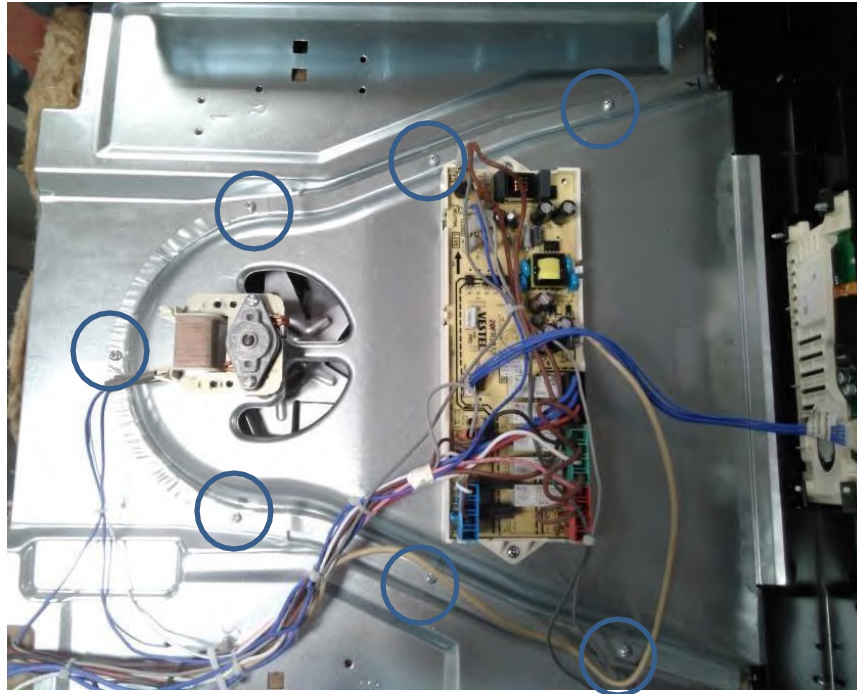


Pull the motor to below direction and remove



BUILT IN OVEN SERVICE MANUAL

Disassembly of new design cooling fan
unscrew which are shown inside circles.



Detach the nut by turning counterclockwise

Unscrew and free cooling fan



BUILT IN OVEN SERVICE MANUAL

Disassembly Of Upper Heater

Remove wiring connections from rear side.



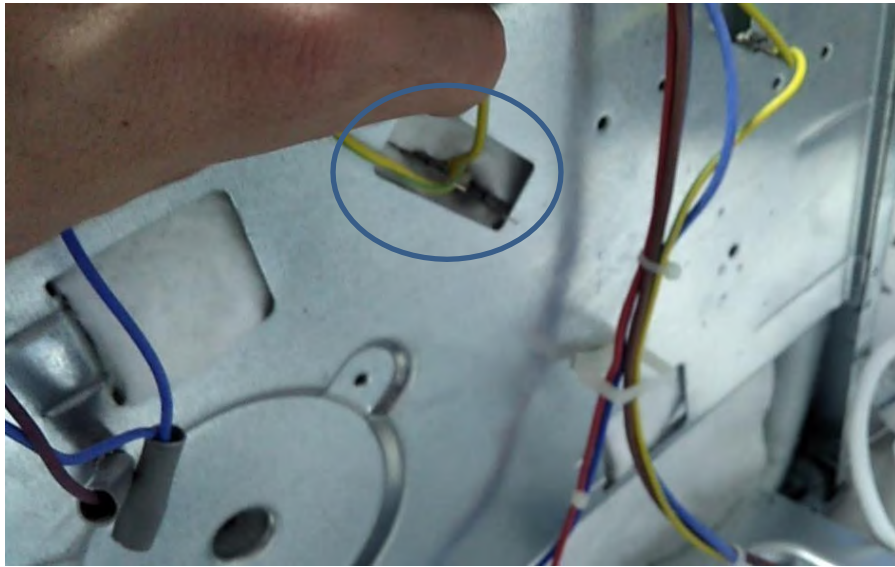
Unscrew which are shown inside circles.



BUILT IN OVEN SERVICE MANUAL

Disassembly Of Ring Heater

Remove wiring connections from rear side



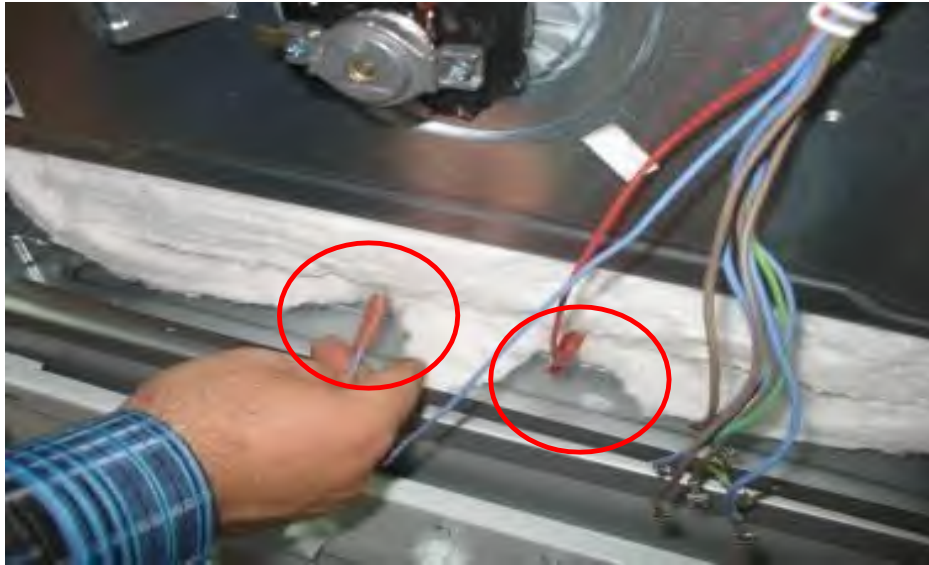
Unscrew which are shown inside circles.



BUILT IN OVEN SERVICE MANUAL

Bottom Heater:

Open the rear panel of the oven.
Remove the cables which are connected to bottom heater.



Raise the isolation wool softly upwards, remove the left and right screws which are connects bottom heater protection sheet metal to oven.



BUILT IN OVEN SERVICE MANUAL

Remove the protection sheet metal of bottom heater by pushing softly downward and pulling it to yourself..



Pull out the bottom heater by raising it to upwards softly.



BUILT IN OVEN SERVICE MANUAL

Follow these instructions backwards while re-assembly.

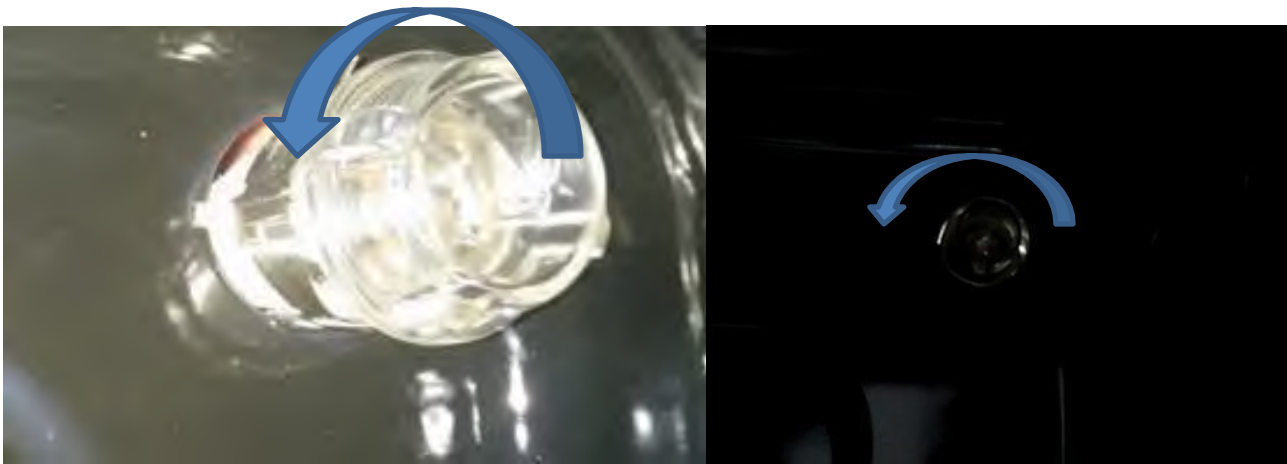
Disassembly Of Oven Light Group.

Remove wiring connections and push the clips. After that push lamp to inside of cavity.



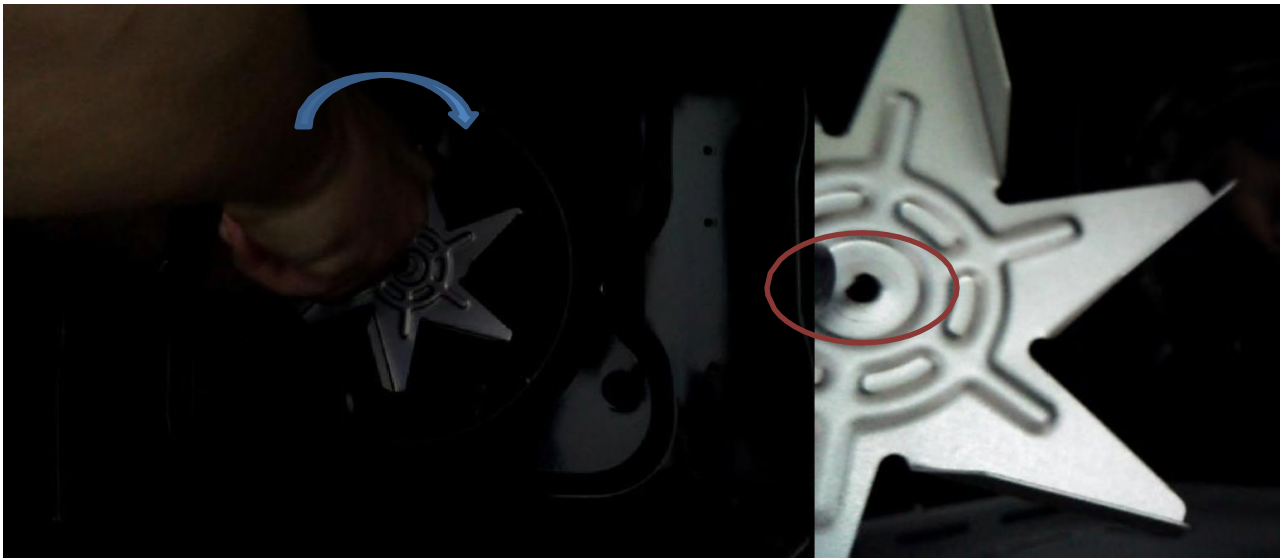
Disassembly Of Only Bulb

Remove the cover by turning as below direction and remove bulb as same.

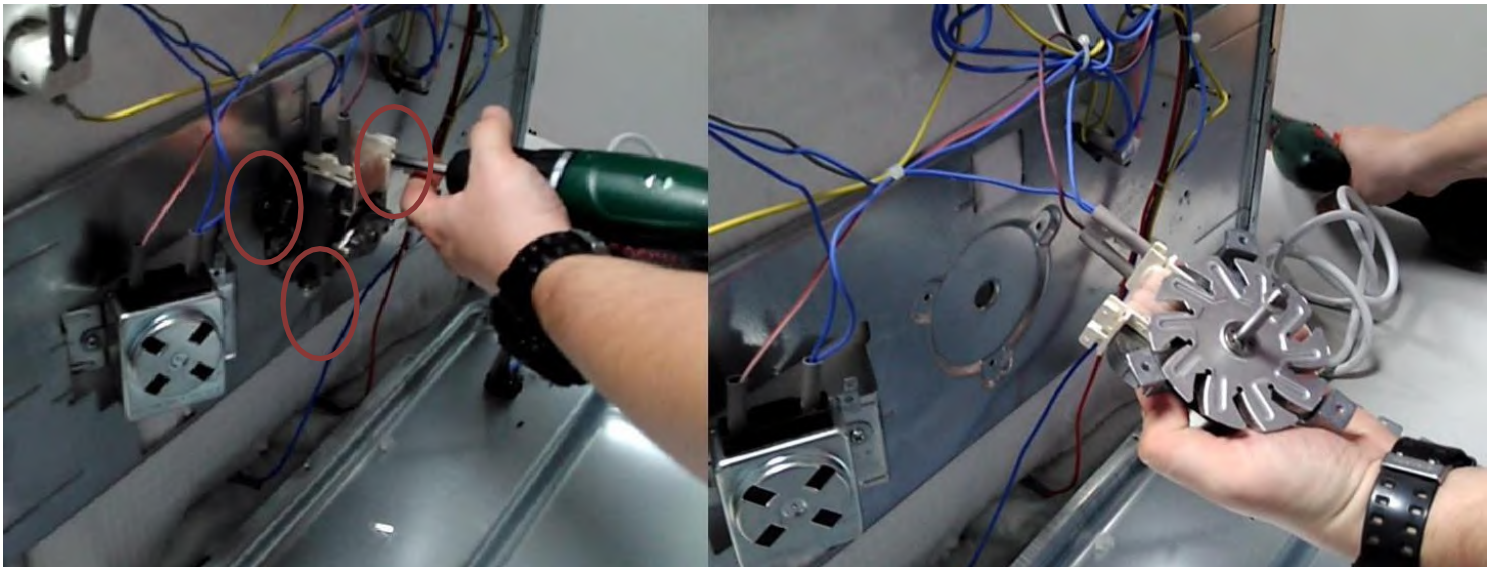


Disassembly Of Fan Motor

Disassemble the nut as below direction to remove, for assembling, be careful about "D" form.

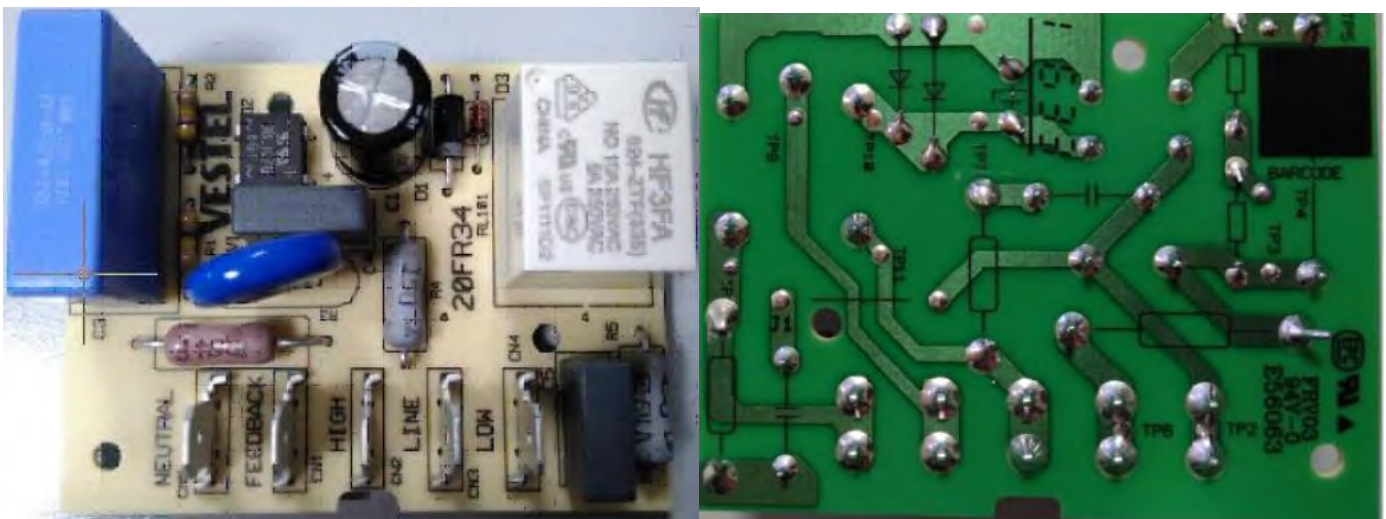


After that, remove the screws which hold fan motor.



BUILT IN OVEN SERVICE MANUAL

Double Speed Fan Motor and its Electronic Board

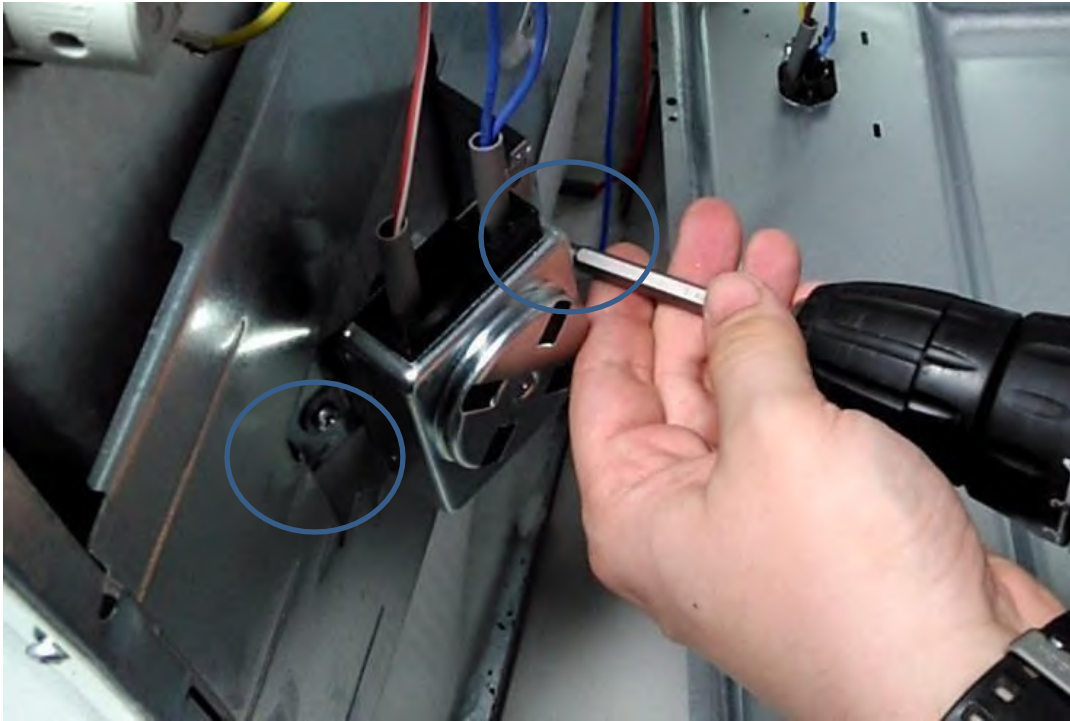


If the fan motor does not work properly, please check the relevant electrical connections first. If everything seems OK, please change the PCB first. If the issue continues, please change the fan motor.

BUILT IN OVEN SERVICE MANUAL

Dissassembly Of Turnspit Motor

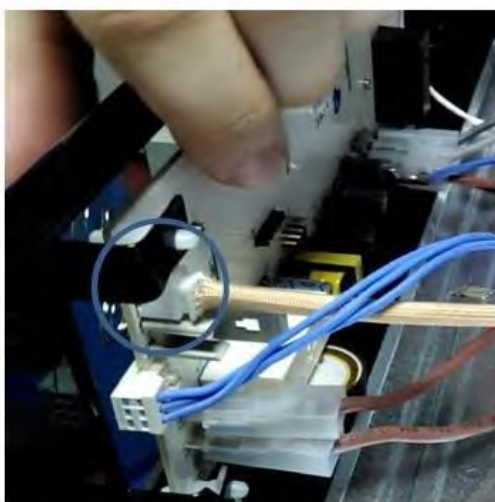
Remove the screws as below.



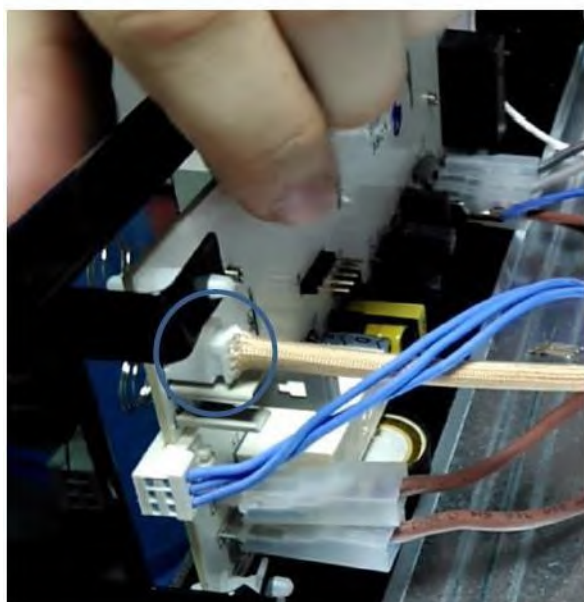
Changing Visio Touch Control Panels / Visio Touch Error Codes

ER1: There is a fault with the pt1000 sensor (circuit, sensor or cable) that detects the internal temperature of the oven.

1. Check PT1000 connections at display.



2. Remove PT1000 from Visio touch and unscrew the bulb from cavity as below.



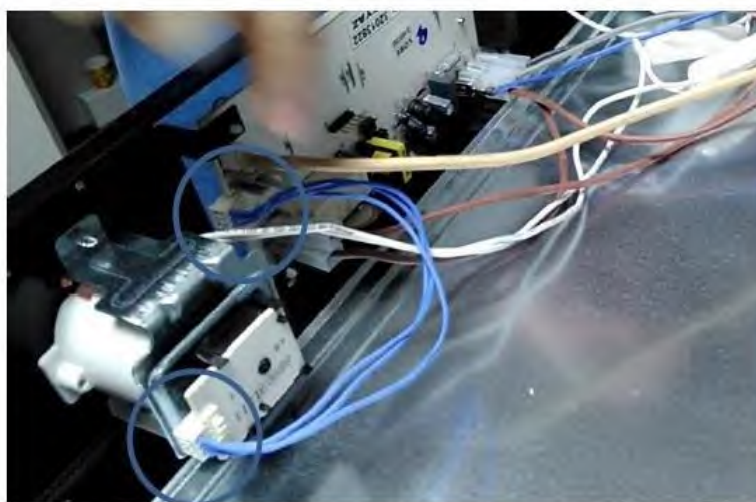
BUILT IN OVEN SERVICE MANUAL

3. If problem is not solved, change visio touch. Remove the visio touch by using nippers



ER2: Error about encoder of thermostat

Check encoder wiring



BUILT IN OVEN SERVICE MANUAL

Change encoder cable . if problem not solved, change encoder itself.



ER3: Error about Meat Probe

Check wiring of meat probe or encoder connections. if problem not solved, change meat probe, if error still continues, change encoder.

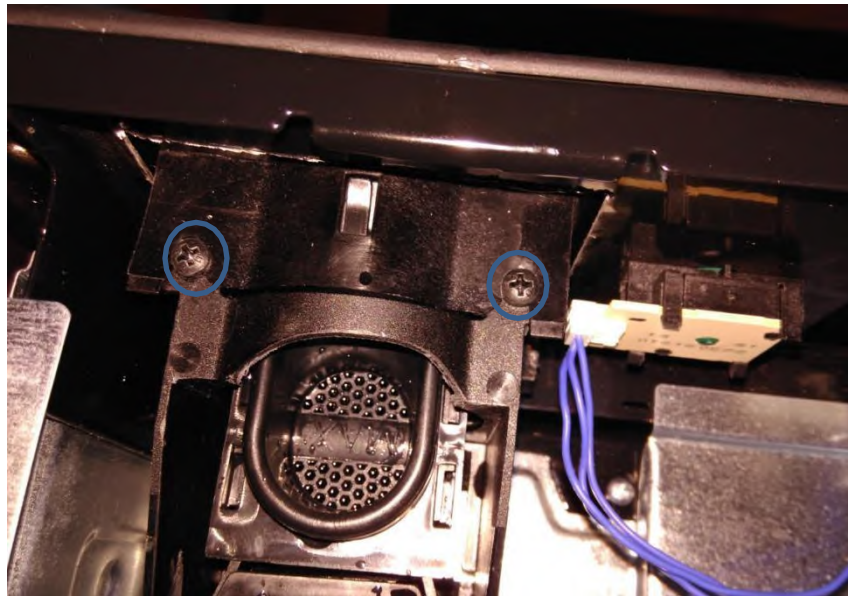


STEAM UNIT

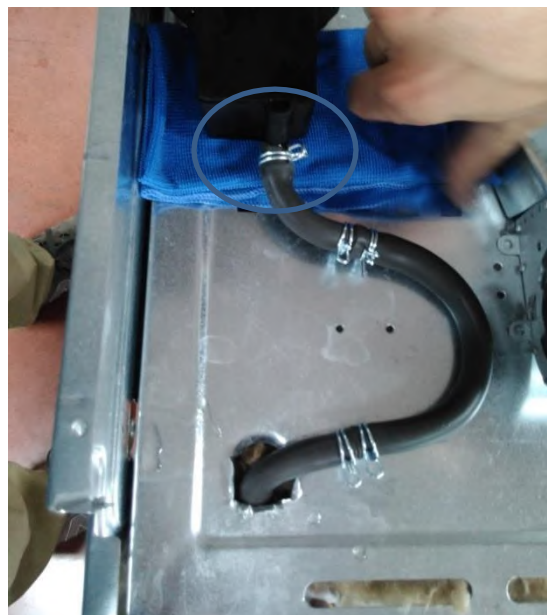
Remove upper and rear panel

Changing water reservoir

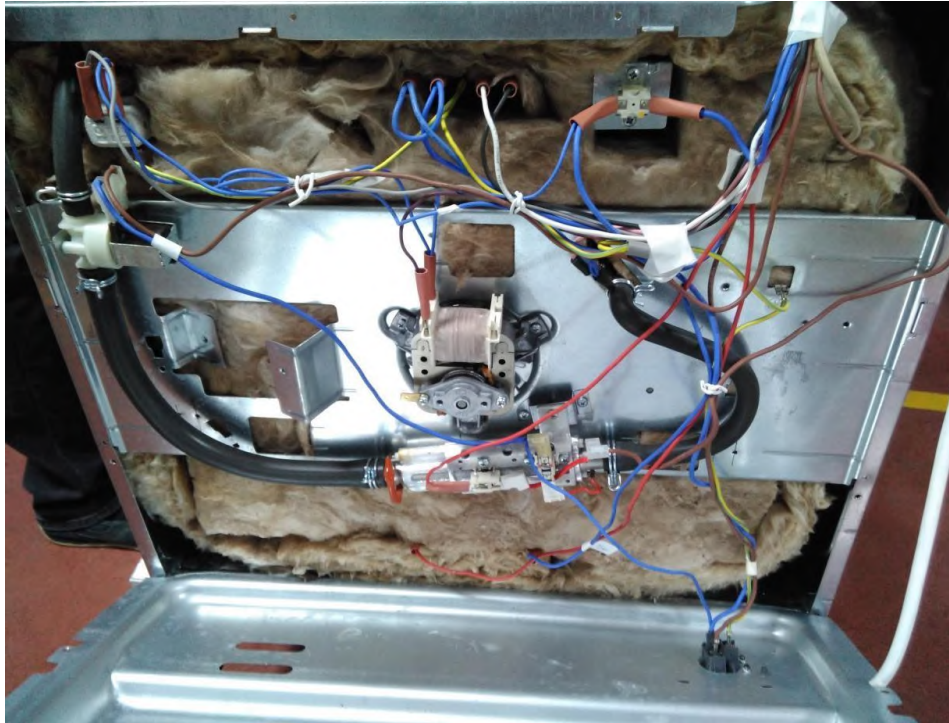
Unscrew as below to remove water reservoir.



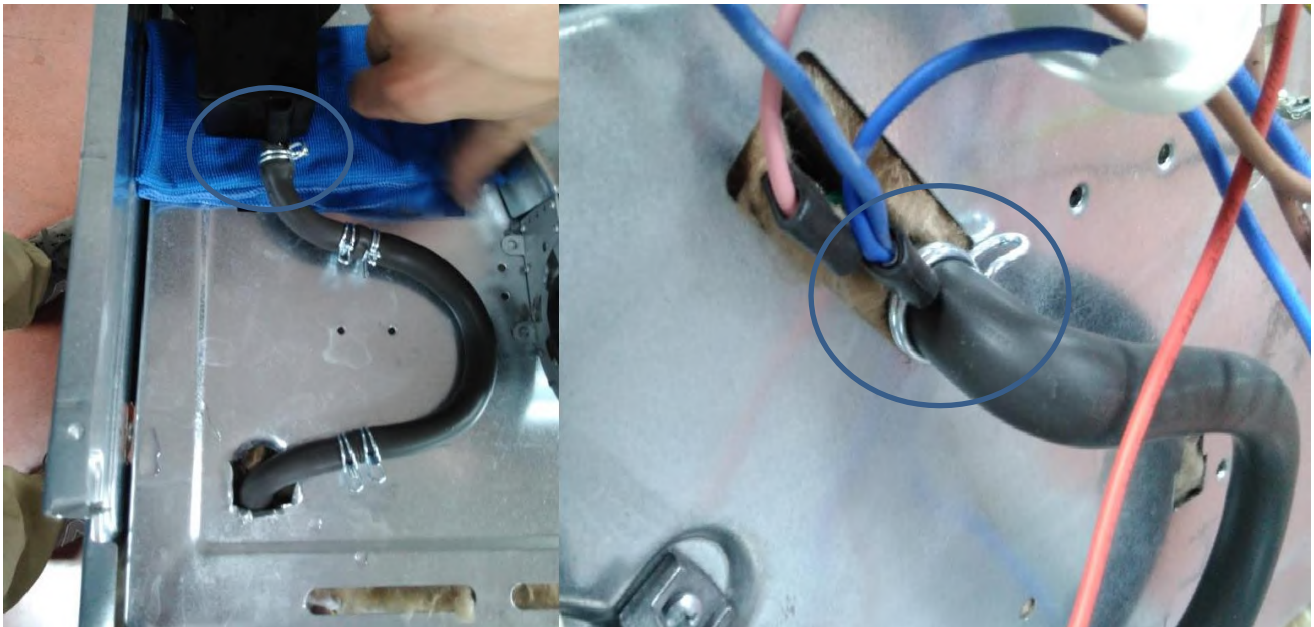
Remove the clips and release the water reservoir.



Changing steam unit

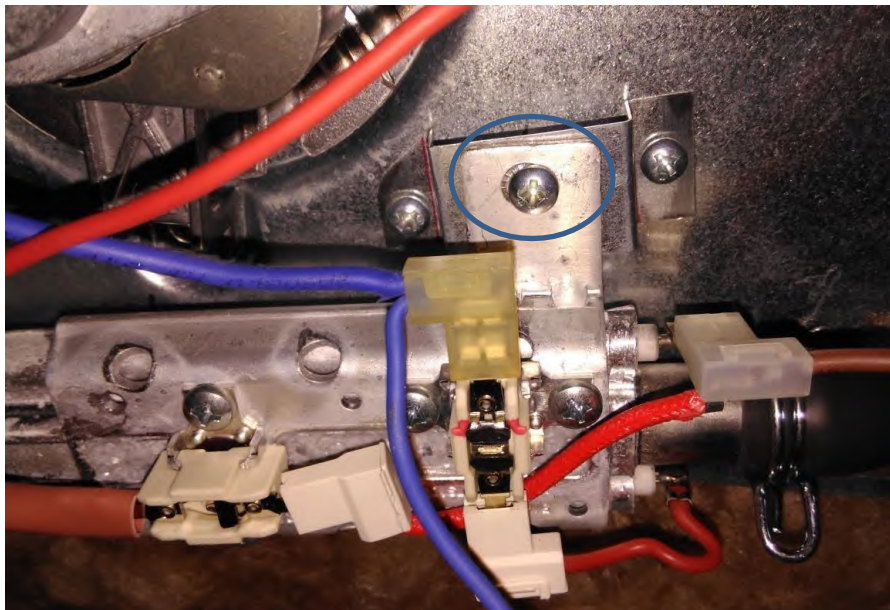
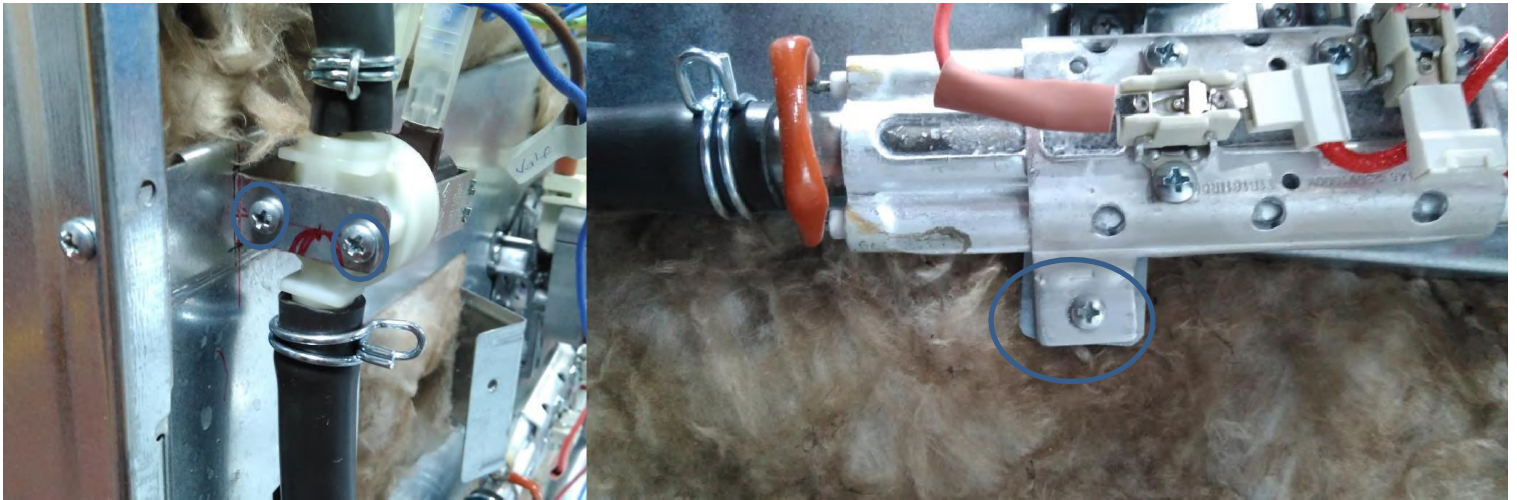


Remove the clips and release the steam pipes



SMART OVENS SERVICE MANUAL

To remove all unit, unscrew as below. Remove wiring.



Change all steam unit.

BUILT IN OVEN SERVICE MANUAL

If there is a temporary disconnection when Er 1, Er 2 or Er 3 occurs, the "-" and "+" keys can be pressed together to bring the oven to ready status. If the fault is not temporary, the electronic circuit must be repaired.

ER4: Oven temperature is higher than 350 degrees.

When Er 4 is formed, the oven can be used again by pressing the "-" and "+" keys together when the oven temperature falls below 260 ° C.

If temperature is not decreased, change limit thermostat.



If limit thermostat is active, check PT1000 and encoder of thermostat, if you find a problem change the part.

ER5: While manual cooking and cooking with meat probe, there is a maximum cooking time. If function is not changed for 3 hours, heaters will be stopped and error code is shown on display.

When Er 5 is formed, the oven can be ready to use again by pressing the "-" and "+" keys together

ER6: If door lock is not detected when the door is locked, the resistances are disabled and the error condition is indicated.

Check door lock connections, change door lock or cables. if the problem not solved, change Visio Touch

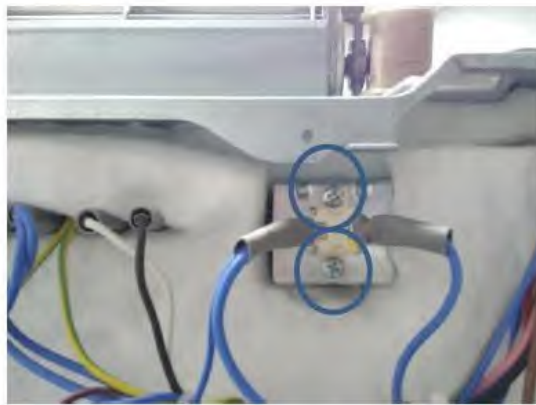
BUILT IN OVEN SERVICE MANUAL

If there is a temporary disconnection when Er 1, Er 2 or Er 3 occurs, the "-" and "+" keys can be pressed together to bring the oven to ready status. If the fault is not temporary, the electronic circuit must be repaired.

ER4: Oven temperature is higher than 350 degrees.

When Er 4 is formed, the oven can be used again by pressing the "-" and "+" keys together when the oven temperature falls below 260 ° C.

If temperature is not decreased, change limit thermostat.



If limit thermostat is active, check PT1000 and encoder of thermostat, if you find a problem change the part.

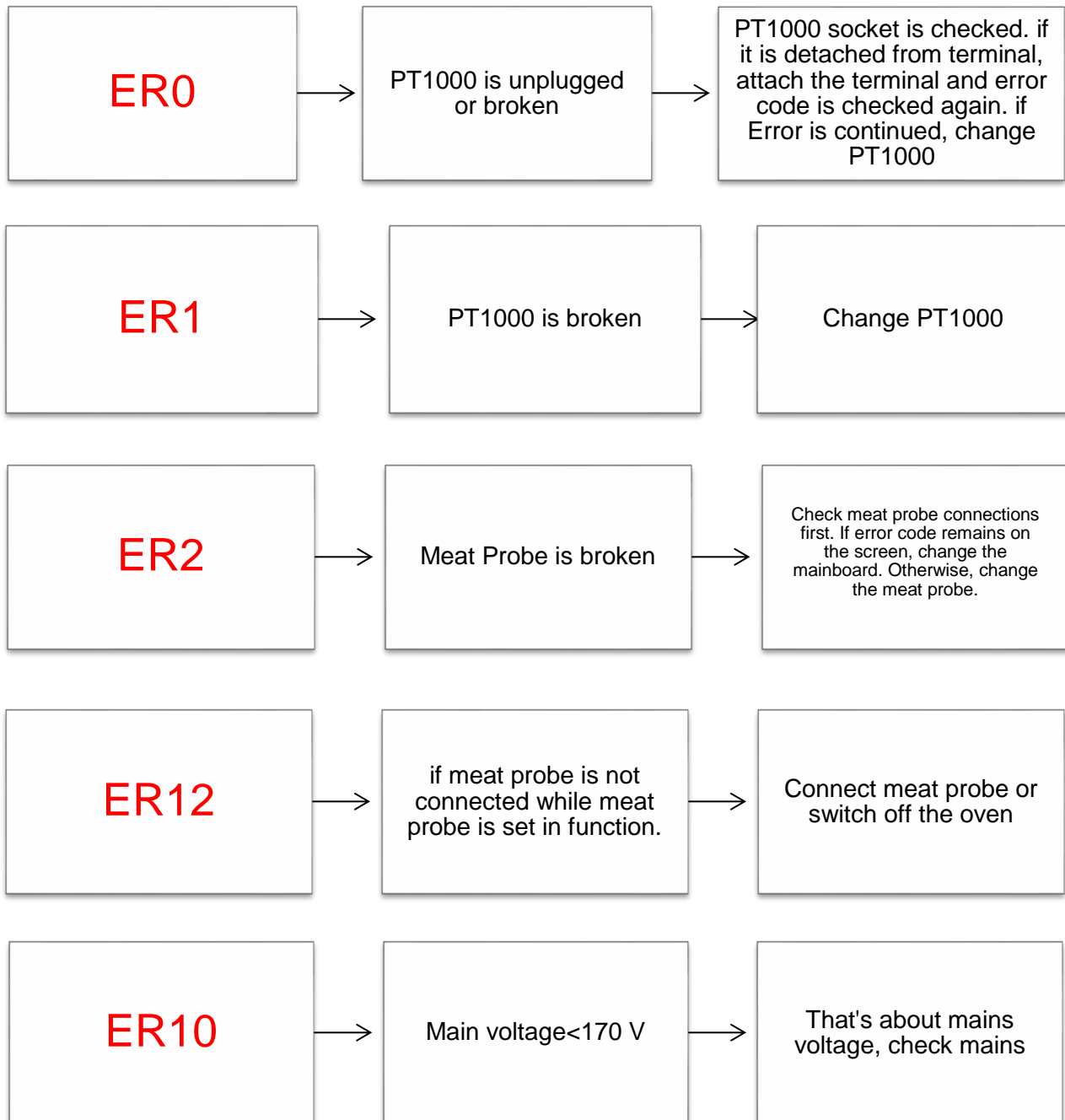
ER5: While manual cooking and cooking with meat probe, there is a maximum cooking time. If function is not changed for 3 hours, heaters will be stopped and error code is shown on display.

When Er 5 is formed, the oven can be ready to use again by pressing the "-" and "+" keys together

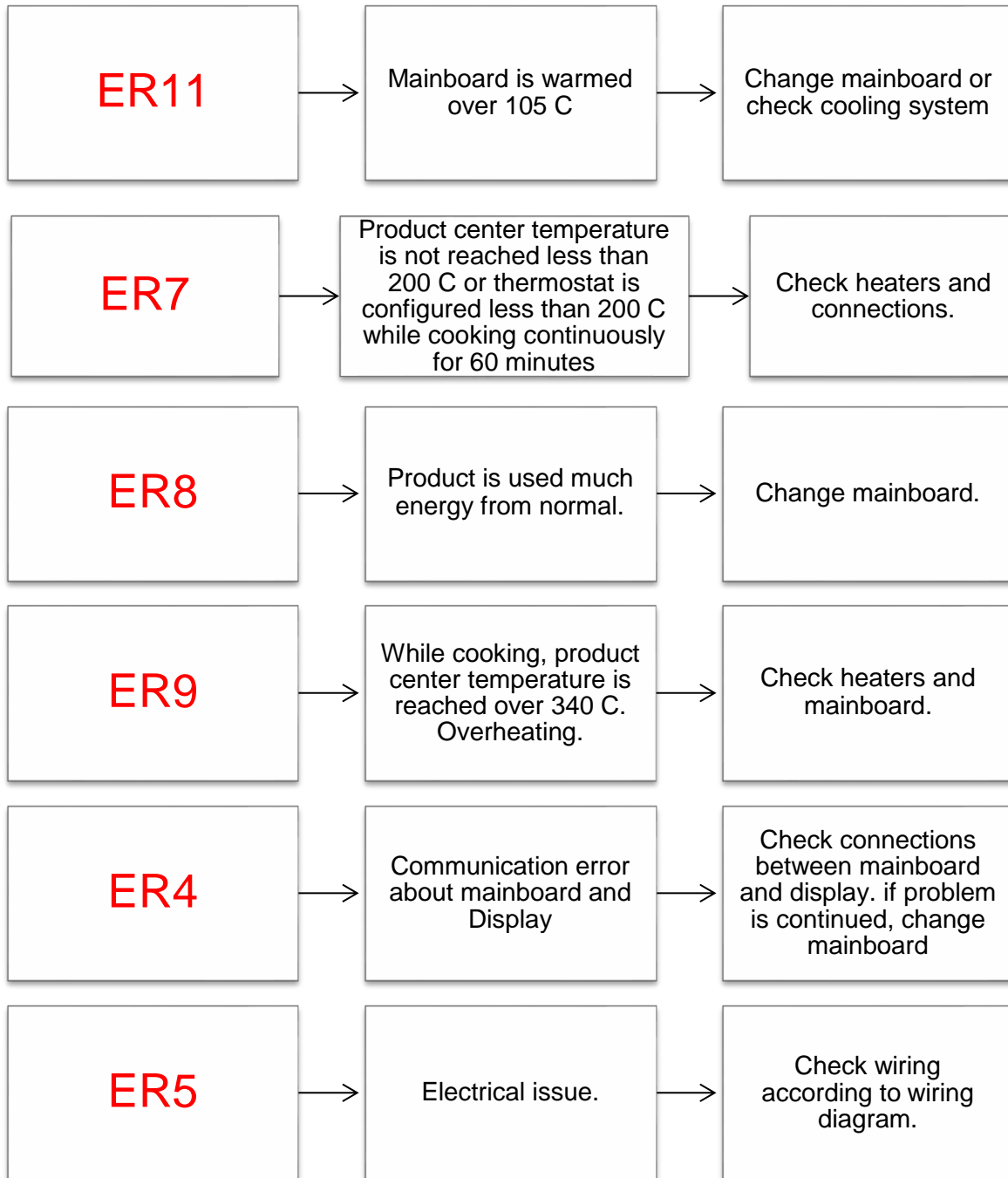
ER6: If door lock is not detected when the door is locked, the resistances are disabled and the error condition is indicated.

Check door lock connections, change door lock or cables. if the problem not solved, change Visio Touch

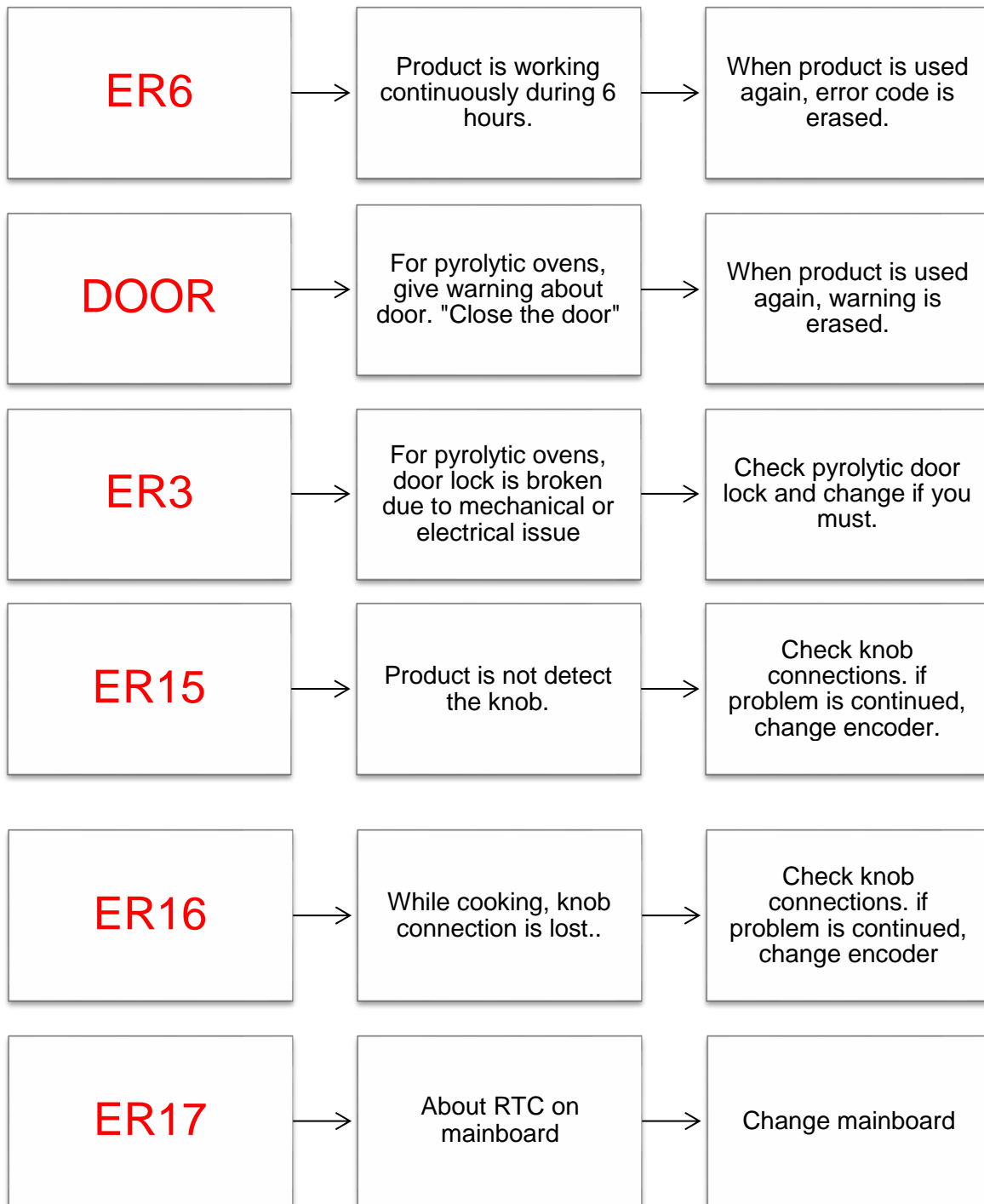
FULL TOUCH OVEN ERROR CODES



BUILT IN OVEN SERVICE MANUAL



BUILT IN OVEN SERVICE MANUAL



Digital Timer - **ER20 Error**

Our timers work in both 50Hz and 60Hz frequencies. Once the product is energized, timer sends signals to measure the frequency of the mains voltage. This processes happen in milliseconds and numbers of times. In normal circumstances, if the timer is affected by the noise and cannot measure the frequency during the process, timer would keep try to measure the frequency again and eventually it would find the correct frequency and start to work in it.

Due to the bug in the software, if the timer is affected by the noise for the first time and could not find the correct frequency; it flashes ER20 on the display.

Once you encounter with this matter, please disconnect the product from the mains and make the electrical connection again. If this does not work, then changing the digital timer is the final solution.

BUILT IN OVEN SERVICE MANUAL



Full Touch LED Control Panel **Smart LCD Ready Cook Control Panel**

Family Design Full Touch

Monochrome LCD Control Panel **Slim LED Touch Control Panel (for 50lt and 75lt ovens)**

ERO → PT1000 is broken or disconnected. → Please check PT1000's terminal connections. Solved? → Please change the PT1000.

ER1 → PT1000 is broken. → Please change the PT1000.

ER2 → Meat probe is broken. → Check meat probe's connections. Solved? → Please change the Meat Probe. → Change the mainboard.

ER3 → The door lock is broken electrically or mechanically while pyrolytic function. → Check pyrolytic door lock and change if it is necessary.

ER4 → The error may occur in the communication port. → Check connections between the mainboard and the display. → Change data cable between mainboard and display. → Change the mainboard.

ER5 → This is a communication issue, disconnected. → Check/Change data cable between mainboard and display. → Check connections according to wiring diagram.

ER6 → If there is no intervention for 6 hours, the error is showed. → The error code will be erased, when the product is used again.

ER7 → The central temperature cannot reach to the set values after the heaters work for 1 hour nonstop. → Check heaters' connections. → Check heaters. → Change the mainboard.

ER8 → The error code is showed in order to prevent the product draw voltage more than the usual. → Change the mainboard.

ER9 → The central temperature is above 340C while cooking. → Check heater and mainboards' connections. → Change the mainboard.

ER10 → If the mains voltage drops under 170V (110), this error is showed. If the mains voltage increases above 180V(110), the error is erased. → Please check main voltage. It needs to be above 180V.

ER11 → The mainboard's temperature is above 155C. The heaters are closed. → Check cooling system. Solved? → Change the mainboard.

ER12 → Meat probe's connection open circled while the product is working and the value for meat probe is set. → Check meat probe's connections. → Switch off the product. → Please change the mainboard.

door → This is a warning for pyrolytic ovens. It means "Close the door." → The error code will be erased, when the product is used again.

ER15 → The product cannot detect the knob. → Check knob connections. → Check/Change data cable between encoder and display. → Change encoder.

ER16 → One of more knob's connection is disconnected while the product is open. → Check knob connections. → Check/Change data cable between encoder and display. → Change encoder.

ER17 → RTC Crystal is missing. → Change the mainboard.

Pyrolytic Digital Touch Programmer **Pyrolytic Digital Programmer**

Family Design Digital **Family Design Visio Touch**

ERO → PT1000 is broken or disconnected. → Please check PT1000's terminal connections. Is the error still displaying? → Please change the PT1000.

ER1 → PT1000 is broken. → Please change the PT1000.

ER2 → Meat probe is broken. → The error code will be erased, when the product is used again.

ER3 → The door lock is broken electrically or mechanically while pyrolytic function. → Check pyrolytic door lock and change if it is necessary.

ER4 → The error may occur in the communication port. → Check connections between the mainboard and the display. → Change data cable between mainboard and display. → Change the mainboard.

ER5 → This is a communication issue, disconnected. → Check/Change data cable between mainboard and display. → Check connections according to wiring diagram.

ER6 → If there is no intervention for 6 hours, the error is showed. → The error code will be erased, when the product is used again.

ER7 → The central temperature cannot reach to the set values after the heaters work for 1 hour nonstop. → Check heaters' connections. → Check heaters. → Change the mainboard.

ER8 → The error code is showed in order to prevent the product draw voltage more than the usual. → Change the mainboard.

ER9 → The central temperature is above 340C while cooking. → Check heater and mainboards' connections. → Change the mainboard.

ER10 → If the mains voltage drops under 170V (110), this error is showed. If the mains voltage increases above 180V(110), the error is erased. → Check heater and mainboards' connections. → Change the mainboard.

ER11 → The mainboard's temperature is above 155C. The heaters are closed. → Check cooling system. Solved? → Change the mainboard.

ER12 → Meat probe's connection open circled while the product is working and the value for meat probe is set. → Check meat probe's connections. → Switch off the product. → Please change the mainboard.

ER15 → The product cannot detect the knob. → Check knob connections. → Check/Change data cable between encoder and display. → Change encoder.

ER16 → One of more knob's connection is disconnected while the product is open. → Check knob connections. → Check/Change data cable between encoder and display. → Change encoder.

ER17 → RTC Crystal is missing. → Change the control card.

door → This is a warning for pyrolytic ovens. It means "Close the door." → The error code will be erased, when the product is used again.

Visio Touch Control Panel

ER1 → PT1000 is broken. → Please change the PT1000.

ER2 → There is an error regarding the encoder of thermostat. → Please check the connections of encoder. → Please change the encoder.

ER3 → Meat probe is broken. → Check meat probe's connections. Is the error still displaying? → Please change the Meat Probe. → Please change the encoder.

ER4 → The central temperature is above 340C while cooking. → Check heater and control cards' connections.

ER5 → If there is no intervention for 6 hours, the error is showed. → The error code will be erased, when the product is used again.

ER6 → If there is no intervention for 6 hours, the error is showed. → If oven temperature is under 260C and knob isn't at Pyro position when ER6 error code has occurred, "-" and "+" should be touched together.

door → This is a warning for pyrolytic ovens. It means "Close the door." → The error code will be erased, when the product is used again.

Digital Full Programmer **Digital Touch Full Programmer**

ER01 → RTC Crystal is missing. → Change the control card.