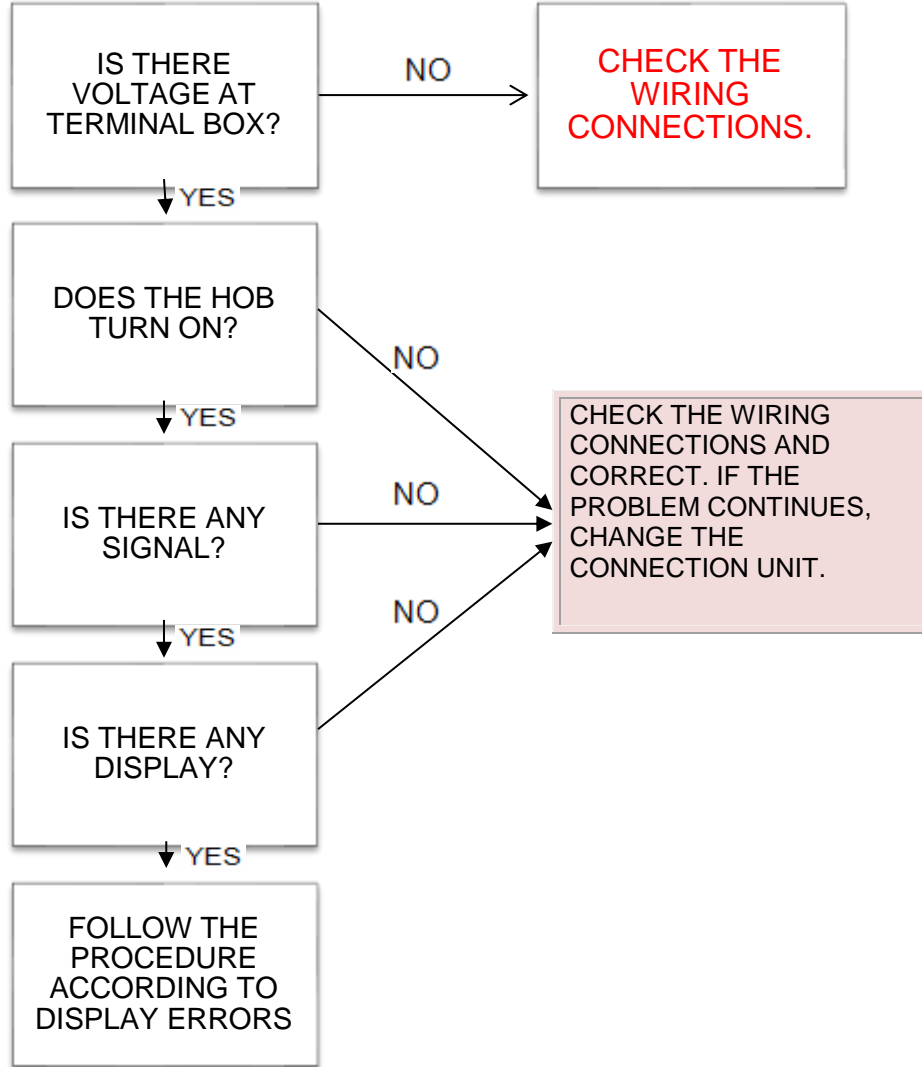
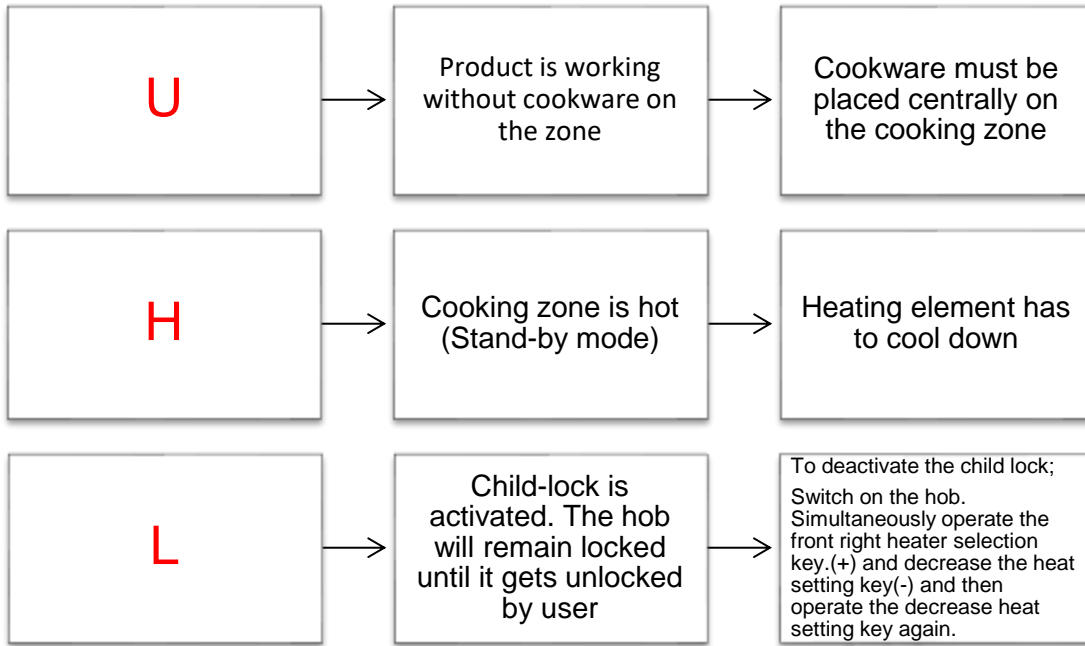


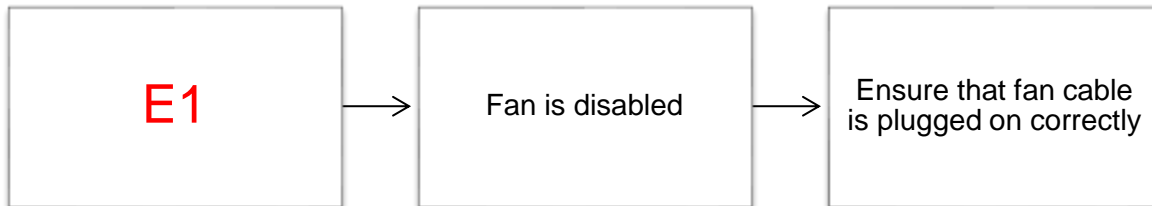
Induction Hob Not Working:



FILE	ISSUE DATE	PREPARED BY	CONTROLLED BY	APPROVED BY
\\manfile\PISIRICICHAZLARFAB\Urun Audit\MÜŞTERİ DESTEK\SERVİS KILAVUZU\SERVİS BİLGİ FORMLARI	13.02.2017	CUSTOMER SUPPORT		



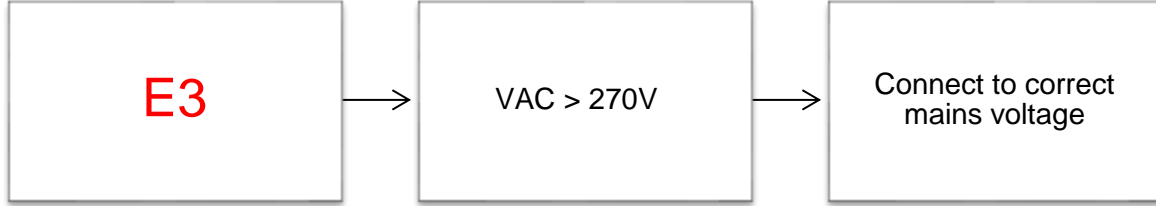
Induction Hob Display Errors:



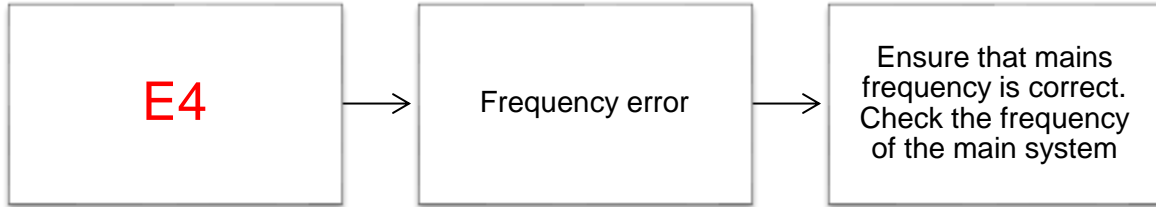
For solving problem, reconnect the cable on below picture.
While reassembling please refer to circuit diagrams



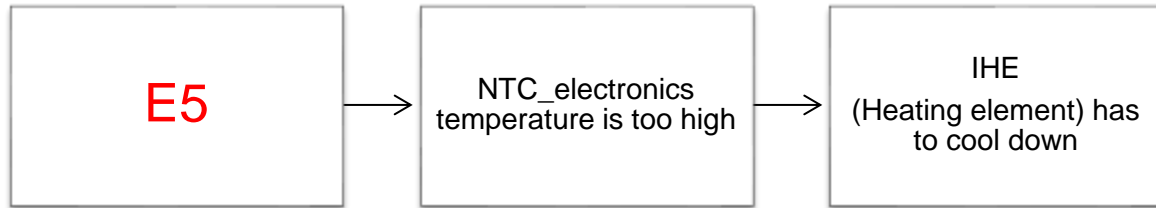
FILE	ISSUE DATE	PREPARED BY	CONTROLLED BY	APPROVED BY
\\manfile\PISIRICICHAZLARFAB\Ur un Audit\MÜŞTERİ DESTEK\SERVİS KILAVUZU\SERVİS BİLGİ FORMLARI	13.02.2017	CUSTOMER SUPPORT		



That could be fixed by turn off hob. If problem continue ,please check electric distribution network.

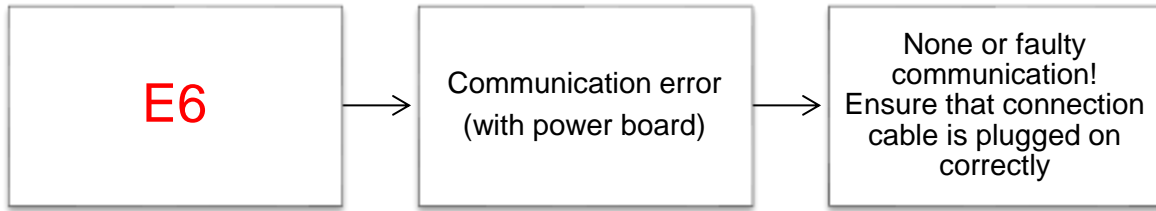


E4 error is shown when hob frequency is different from mains frequency. You could check inductors to know 50 Hz or 60 Hz. If there isnt any difference between mains and hob, turn off it and start again.

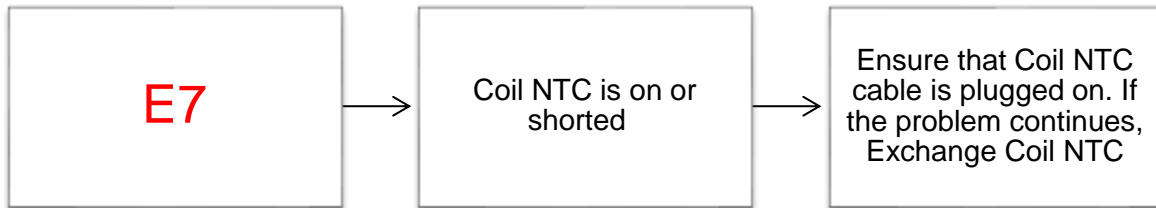
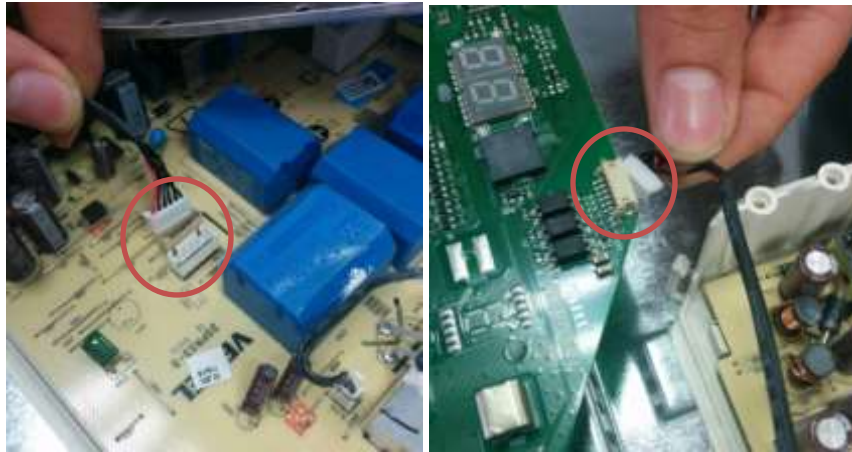


NTC is warmed too high, turn off the hob and wait for cooling. If NTC is warming on seconds, it is a fabrication error and change the inductor which is broken one.

FILE	ISSUE DATE	PREPARED BY	CONTROLLED BY	APPROVED BY
\\manfile\PISIRICICHAZLARFAB\Urun Audit\MÜŞTERİ DESTEK\SERVİS KILAVUZU\SERVİS BİLGİ FORMLARI	13.02.2017	CUSTOMER SUPPORT		



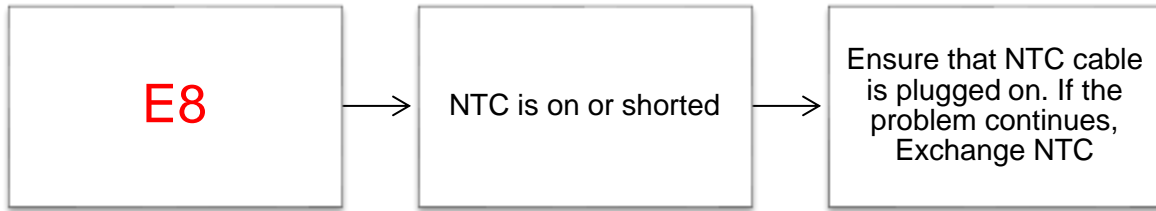
This error is about connection between NTC and control panel. Check below cables. If there any shortcircuit, change the inductor.



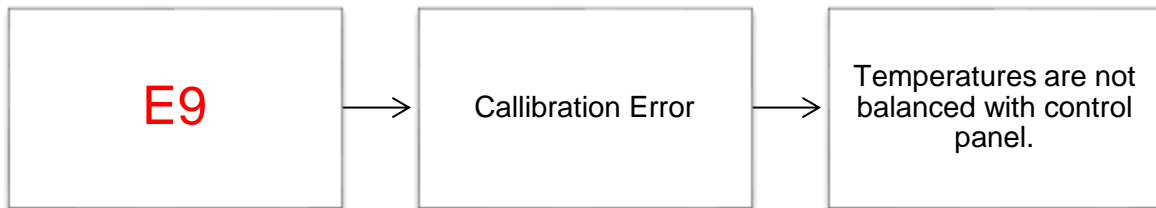
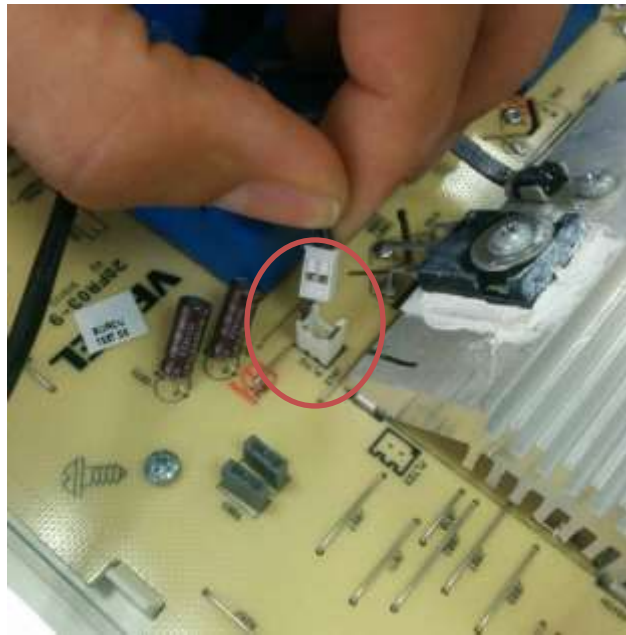
E7 error is showed when coil temperature could not be measured. Check the cable and plug in.



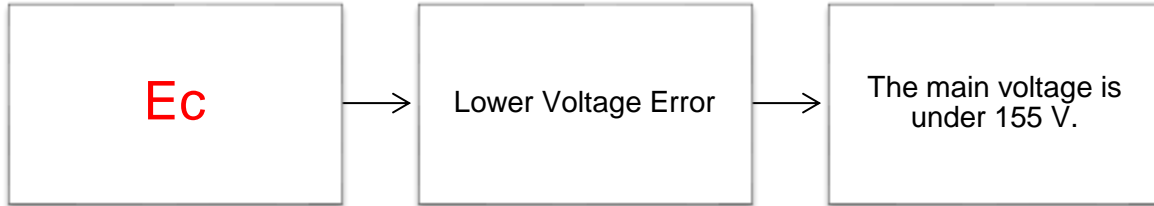
FILE	ISSUE DATE	PREPARED BY	CONTROLLED BY	APPROVED BY
\\manfile\PISIRICICHAZLARFAB\Ur un Audit\MÜŞTERİ DESTEK\SERVİS KILAVUZU\SERVİS BİLGİ FORMLARI	13.02.2017	CUSTOMER SUPPORT		



This error is about cooling sensor. Check the cable and plug in.

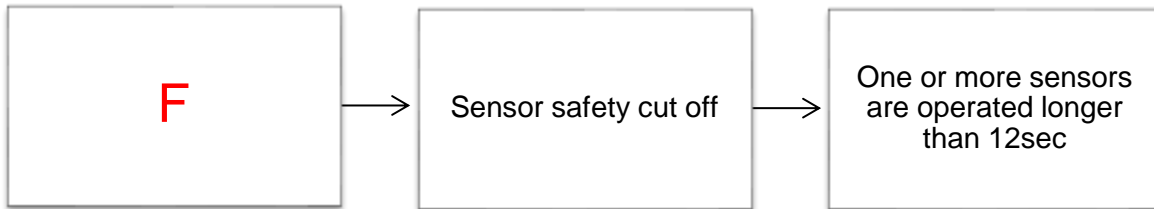


FILE	ISSUE DATE	PREPARED BY	CONTROLLED BY	APPROVED BY
\\manfile\PISIRICICHAZLARFAB\Ur un Audit\MÜŞTERİ DESTEK\SERVİS KILAVUZU\SERVİS BİLGİ FORMLARI	13.02.2017	CUSTOMER SUPPORT		



This error is related with low main voltage. After lower voltage issue solved, Ec continues to show during 20 seconds.

Induction Hob Display Safety Information/Warning:



To prevent the control from unwanted, random sensor operations, a sensor monitoring is included. In case of one or more sensors are operated longer than 12sec, the sensor monitoring routine detects and indicates acoustically and visibly that wrong operation (pot or other object placed on the sensor, water spilled, sensor failure, etc.) and cuts off the normal operation of the control.

Cooktop control is switched to the S-Mode even if key lock is active by disabling all heaters. “F” will flash in all heater displays and acoustically buzzer warning will be heard until removing the pot or object that placed on the sensor(s), etc.

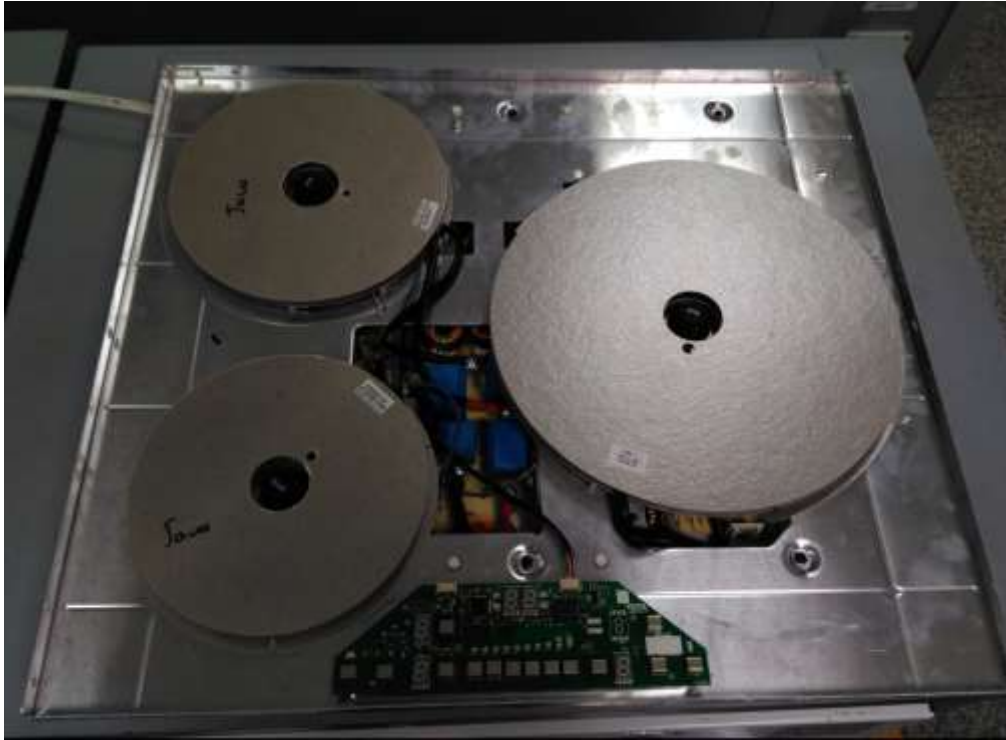
FILE	ISSUE DATE	PREPARED BY	CONTROLLED BY	APPROVED BY
\\manfile\PISIRICICHAZLARFAB\Ur un Audit\MÜŞTERİ DESTEK\SERVİS KILAVUZU\SERVİS BİLGİ FORMLARI	13.02.2017	CUSTOMER SUPPORT		

Disassembly The Induction Hob

Unscrew all surrounding screws of hob :



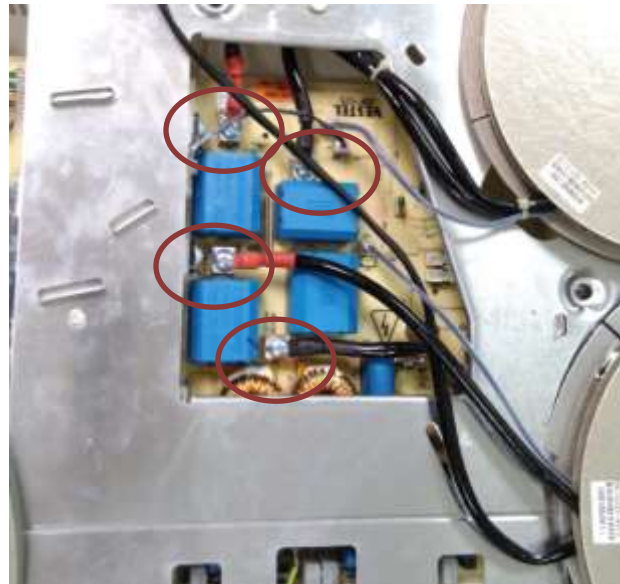
Inside of Induction HOB



FILE	ISSUE DATE	PREPARED BY	CONTROLLED BY	APPROVED BY
\\manfile\PISIRICICHAZLARFAB\Urun Audit\MÜŞTERİ DESTEK\SERVİS KILAVUZU\SERVİS BİLGİ FORMLARI	13.02.2017	CUSTOMER SUPPORT		

Changing Heating Element (IHE)

Pull off terminal connections on the heating element (IHE)
Remove heating element and change with another if necessary



FILE	ISSUE DATE	PREPARED BY	CONTROLLED BY	APPROVED BY
\\manfile\PISIRICICHAZLARFAB\Ur un Audit\MÜŞTERİ DESTEK\SERVİS KILAVUZU\SERVİS BİLGİ FORMLARI	13.02.2017	CUSTOMER SUPPORT		

Terminal Connection

There is a circuit diagram on terminal box. It could be changed by mains or customer offer.



Press on the hooks of connection unit for opening terminal box.



FILE	ISSUE DATE	PREPARED BY	CONTROLLED BY	APPROVED BY
\\manfile\PISIRICICHAZLARFAB\Ur un Audit\MÜŞTERİ DESTEK\SERVİS KILAVUZU\SERVİS BİLGİ FORMLARI	13.02.2017	CUSTOMER SUPPORT		

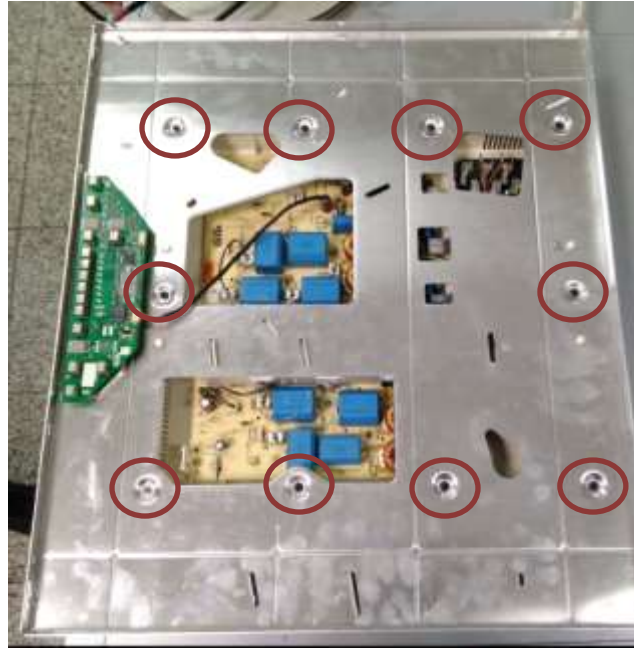
Check wiring or change according to sticker on terminal box



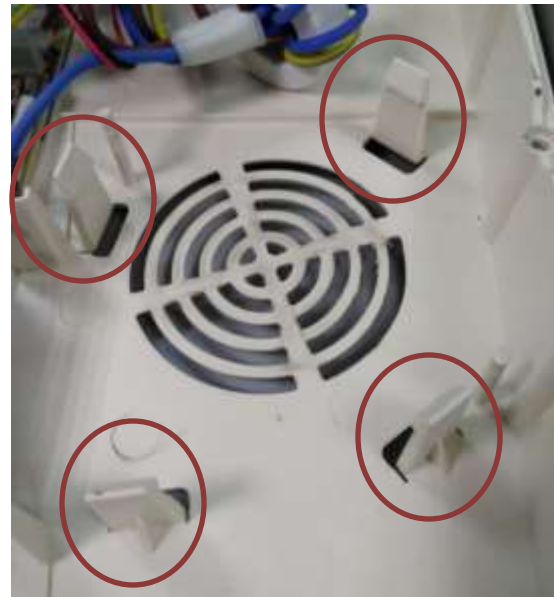
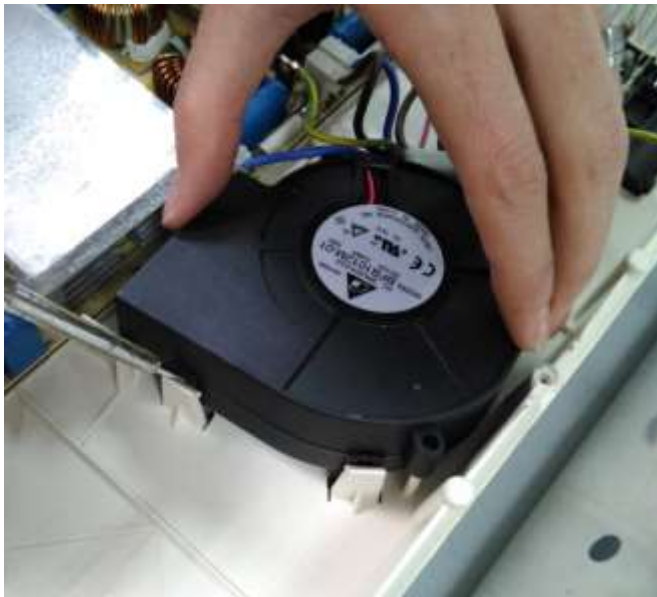
FILE	ISSUE DATE	PREPARED BY	CONTROLLED BY	APPROVED BY
\\manfile\PISIRICICHAZLARFAB\Ur un Audit\MÜŞTERİ DESTEK\SERVİS KILAVUZU\SERVİS BİLGİ FORMLARI	13.02.2017	CUSTOMER SUPPORT		

Changing Cooling Fan and Mainboard

Unscrew all screws which are shown with circles

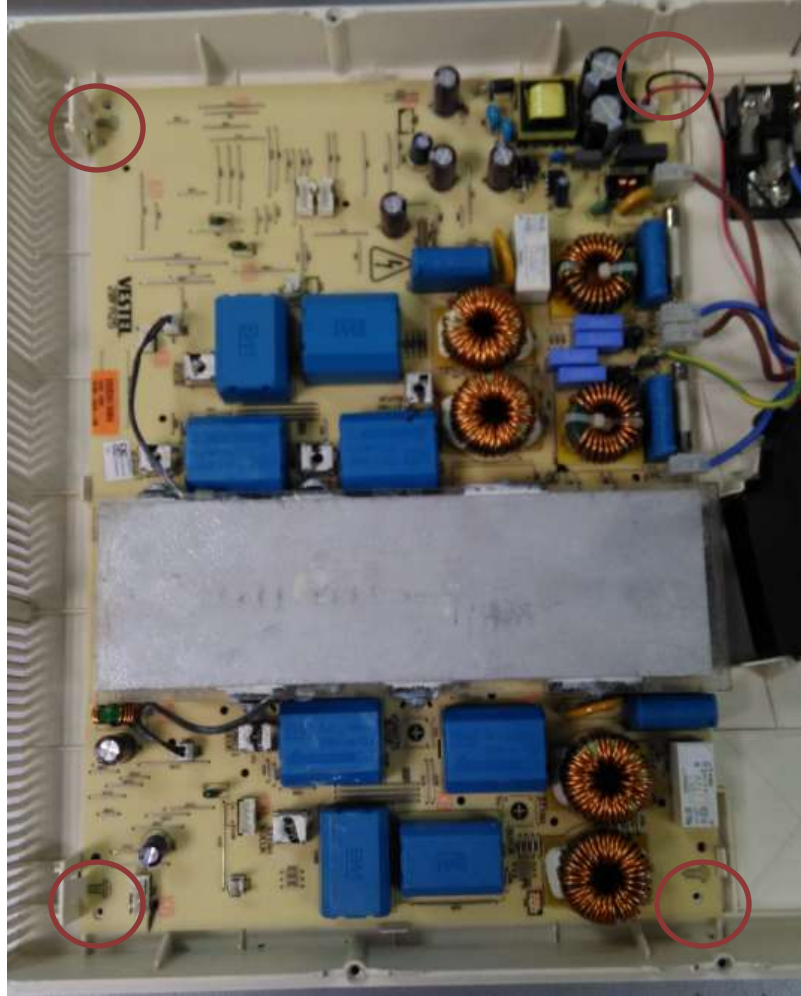


Free the cooling fan by using a tool from clips.



FILE	ISSUE DATE	PREPARED BY	CONTROLLED BY	APPROVED BY
\\manfile\PISIRICICHAZLARFAB\Urun Audit\MÜŞTERİ DESTEK\SERVİS KILAVUZU\SERVİS BİLGİ FORMLARI	13.02.2017	CUSTOMER SUPPORT		

Unscrew all screws which are shown with circles to change mainboard.

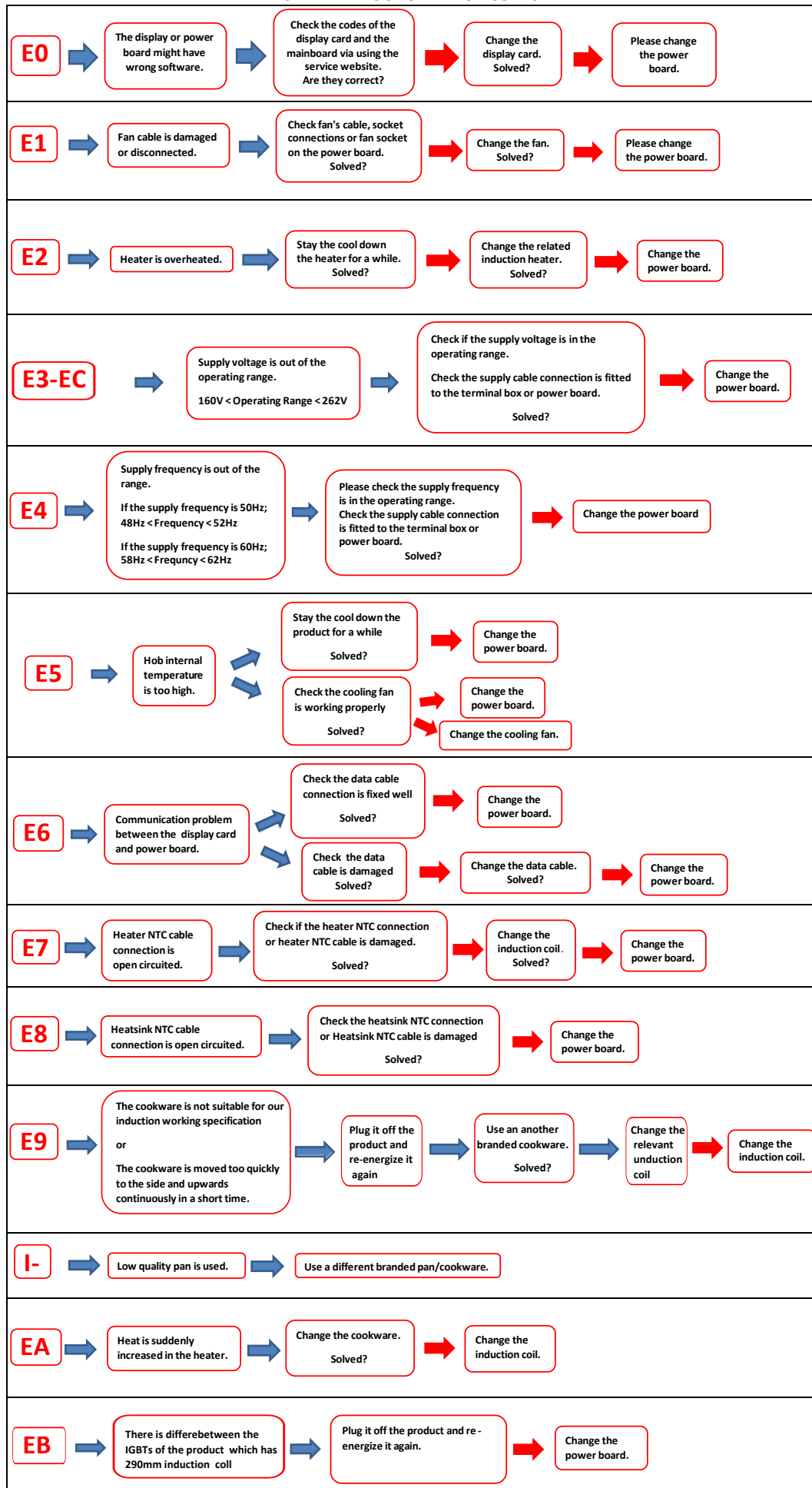


P.S. While reassembling please refer to circuit diagrams

FILE	ISSUE DATE	PREPARED BY	CONTROLLED BY	APPROVED BY
\\manfile\PISIRICICHAZLARFAB\Ur un Audit\MÜŞTERİ DESTEK\SERVİS KILAVUZU\SERVİS BİLGİ FORMLARI	13.02.2017	CUSTOMER SUPPORT		

HOBS SERVICE MANUAL

SERIE 2 INDUCTION ERROR CODES



HOBS SERVICE MANUAL

SERIE 2 INDUCTION ERROR CODES

