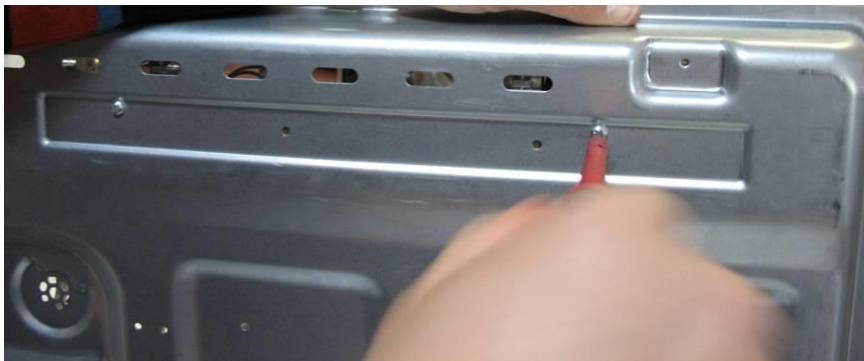


**HOBS SERVICE MANUAL CONTENTS**

<b>1. Gas Manifold and Valves</b>	<b>2</b>
<b>2. Burner Body</b>	<b>6</b>
<b>3. Thermocouple (For FFD Hobs)</b>	<b>8</b>
<b>4. Microswitch</b>	<b>9</b>
<b>5. Ignitor Box</b>	<b>10</b>
<b>6. Spark Plug</b>	<b>11</b>
<b>7. Wiring Harness (Electric Hobs)</b>	<b>12</b>
<b>8. Hot Surface Indicator Light</b>	<b>15</b>
<b>9. Induction Hob – Disassemble</b>	<b>16</b>
<b>10. Induction Heating Element &amp; Touch Control Unit</b>	<b>17</b>
<b>11. Terminal Connection</b>	<b>18</b>
<b>12. Induction Hob Errors and Display Errors</b>	<b>19</b>

**CHANGING GAS MANIFOLD AND VALVES**

Unscrew the manifold fixing screws under the bottom cover of hob.



The manifold assembly brackets are free then.



**HOBS SERVICE MANUAL**

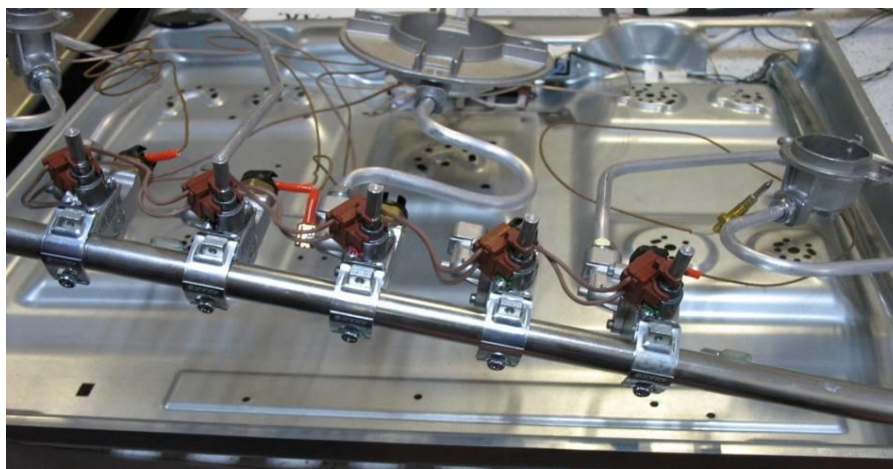
---



Unscrew all burner connections on the bottom cover.

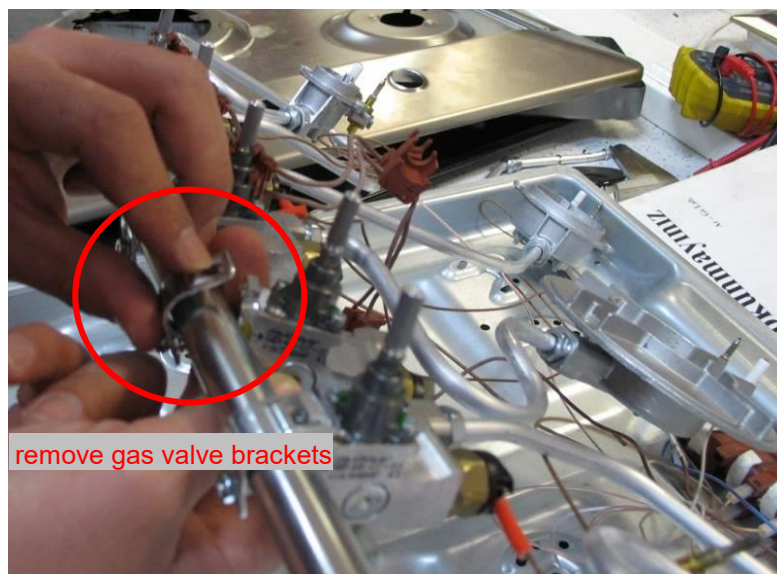


Unscrew all gas valve brackets from the manifold.



## HOBS SERVICE MANUAL

---



The manifold is free to change.

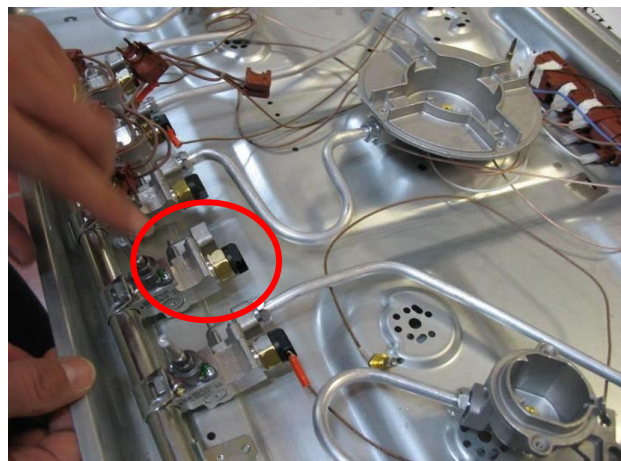
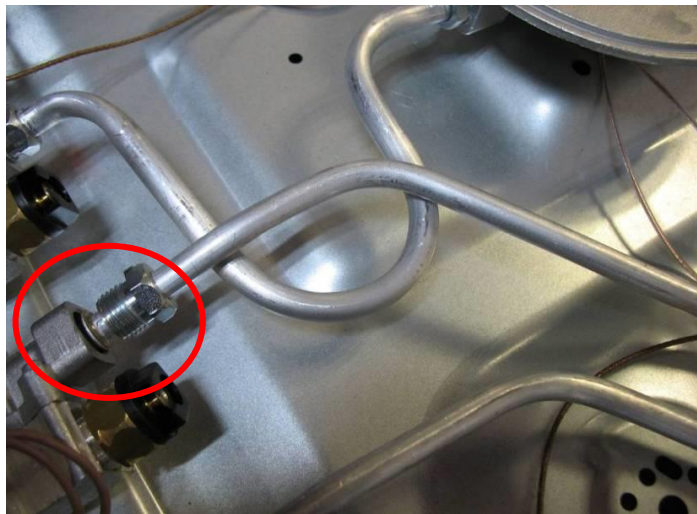
In order to change gas valves ;

Do all above mentioned procedure and follow the below steps:

Take off the microswitches from the valves ( for knob-controlled hobs only )



Remove gas delivery pipe from the gas valve.



The gas valve is free to change.

**\* Reassemble the gas valves in their correct order**

**\* Detect gas leak after reassembly !**

**Changing Burner Body**

Firstly, unscrew the burner body connection on the bottom cover.



Then remove cooktop.



Unscrew the gas delivery pipe connection nut ( with a wrench no:13 )

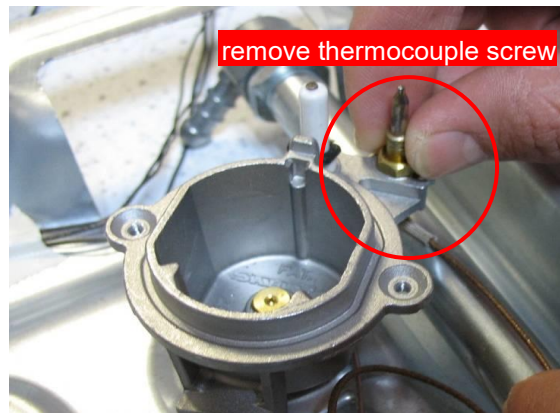


## HOBS SERVICE MANUAL

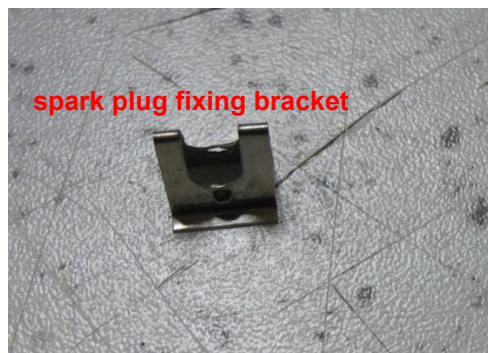
---

For a FFD hob;

Unscrew the thermocouple from the burner body (with a wrench no: 8)



Press the spark plug segment and press the fixing bracket at bottom.



Hold the spark plug up and remove.



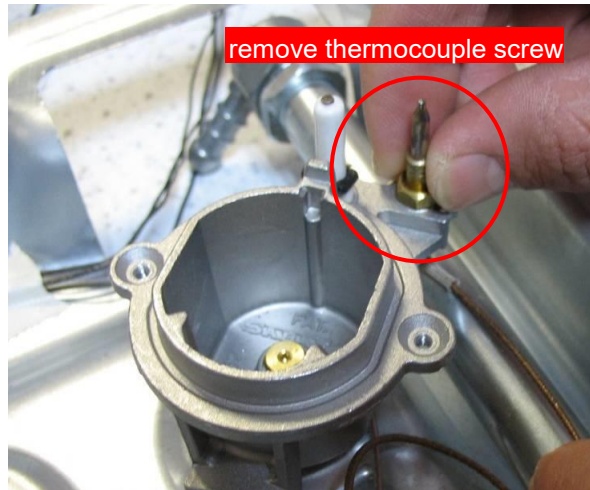
## HOBS SERVICE MANUAL

---

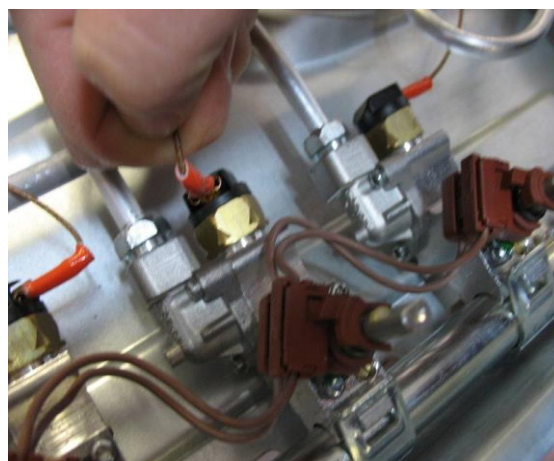
### Changing Thermocouple ( For FFD Hobs )

Remove the cooktop.

Unscrew the thermocouple from the burner body (with a wrench no:8)



Pull off the gas valve end of ffd connection.



Repeat the same procedure backwards for assembling a new FFD.

## HOBS SERVICE MANUAL

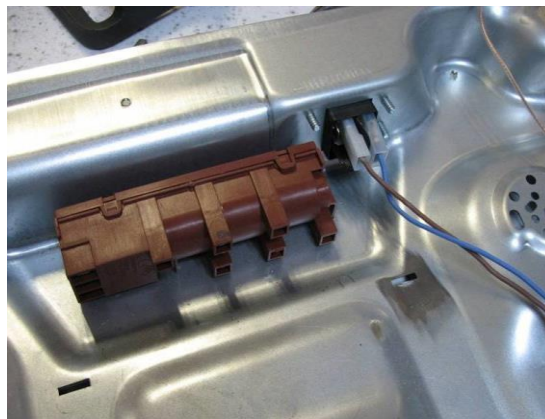
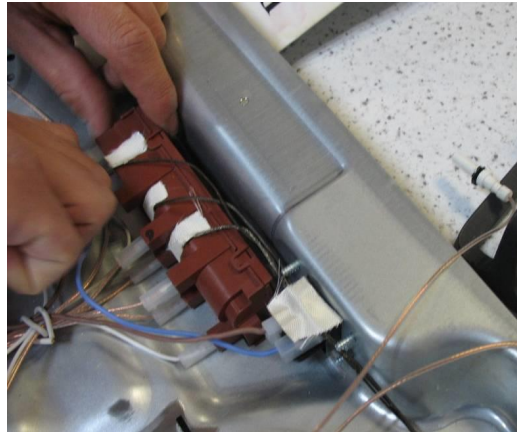
---

### Changing Microswitch\*

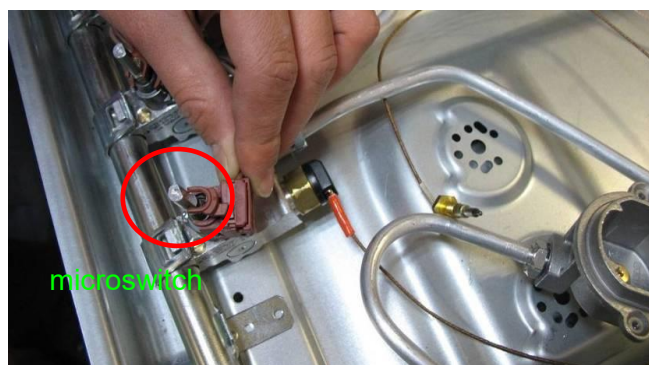
\*For knob-controlled hobs

Remove the cooktop.

Take off the microswitch terminal contacts from the ignitor box.



Remove the microswitch on the gas valve.



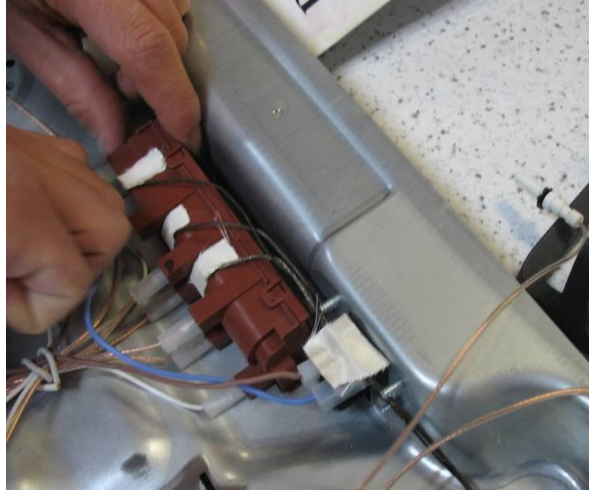
Microswitches are together a total group with its wiring.

So you have to remove all microswitches to change any of them.

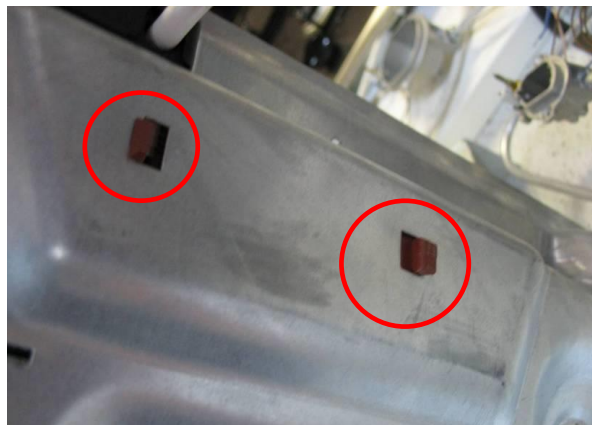
**Changing the Ignitor Box**

Remove the cooktop.

Remove all cable contacts from the ignitor box.



Press the hooks (at bottom cover) of ignitor box and remove.



You may change it with a new one.

**Attention:**

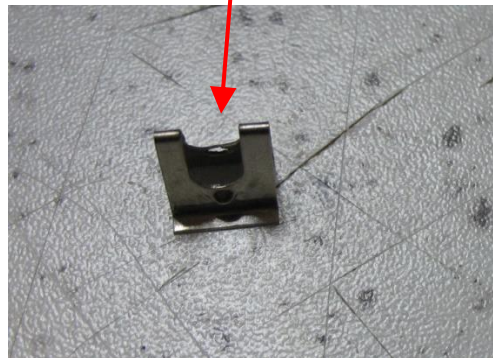
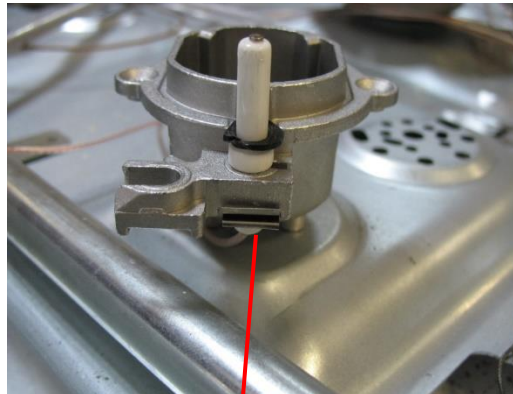
For 5 gas burner hobs; Ignitor earthing cable must be connected on the ignitor box. Please check before use. Otherwise, one of the burners will not light.



### Changing the Spark Plug

Remove the cooktop.

Press the spark plug segment and press the fixing bracket at bottom.



Hold the spark plug up and remove. (The spark plug must be removed with its cable.)



Take off the spark plug terminal connection on the ignitor box.

Please apply this procedure backwards to assemble a new one.

## HOBS SERVICE MANUAL

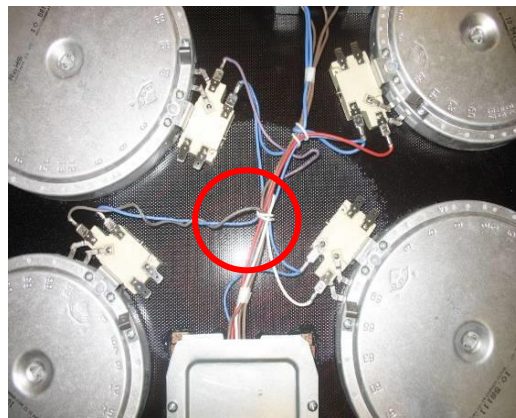
---

### Removing Wiring Harness ( Electric Hobs )

Unscrew the hob bottom cover.



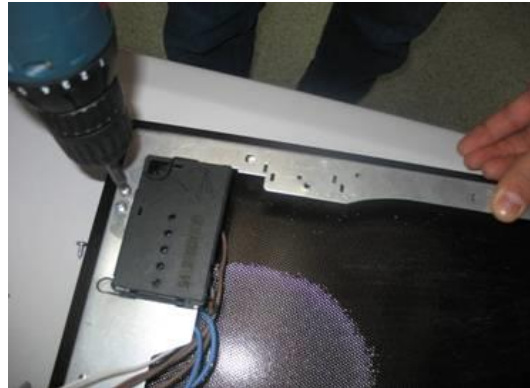
Loosen the silicone cable – to release the wiring harness.



## HOBS SERVICE MANUAL

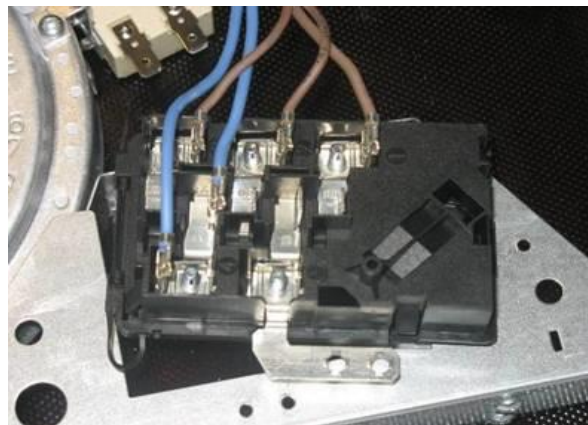
---

Unscrew the terminal box and remove.

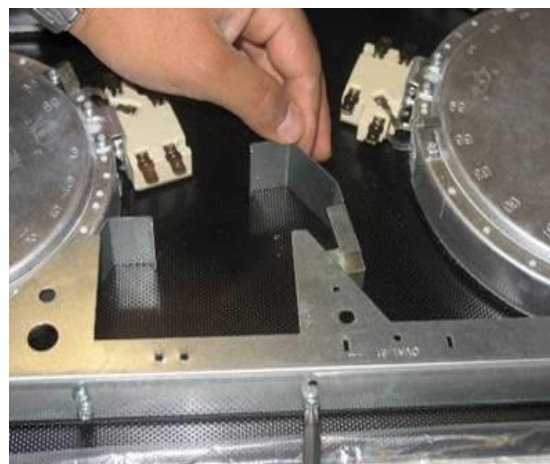


Pull the wiring sockets off terminal box.

Please do not forget that rewiring must be done appropriately.



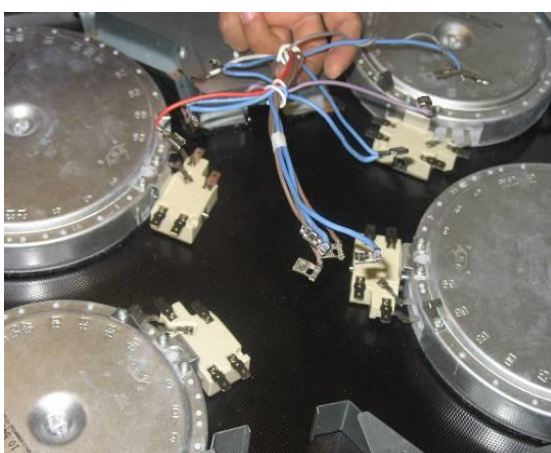
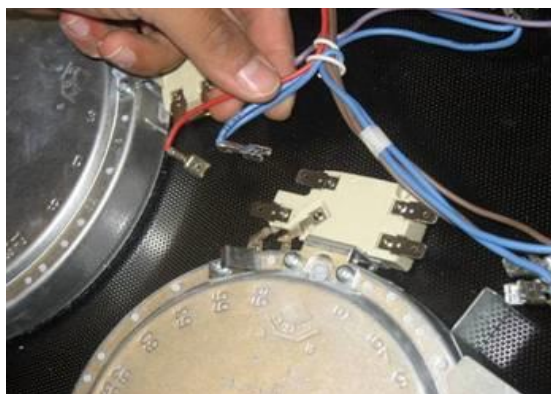
Remove terminal box heat insulating cover.



## HOBS SERVICE MANUAL

---

Take the wiring terminals off the heating elements.



Unscrew the regulator cover and then remove the regler.

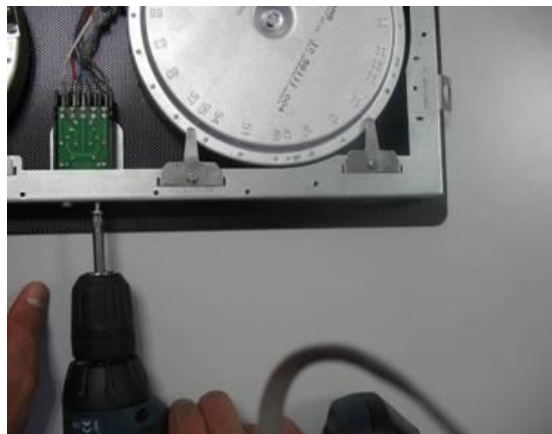


## HOBS SERVICE MANUAL

---

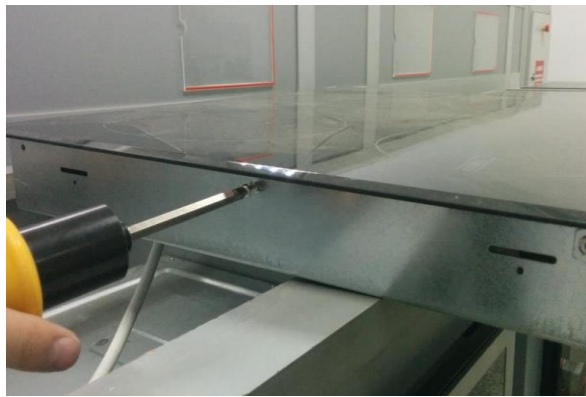
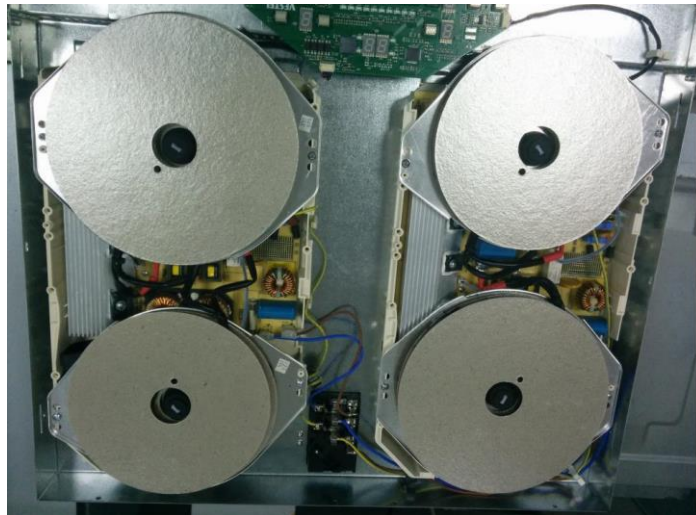
Remove the hot surface indicator light group.

Wiring connections are free.



**Disassemble The Induction Hob**

Unscrew all surrounding screws of the hob.

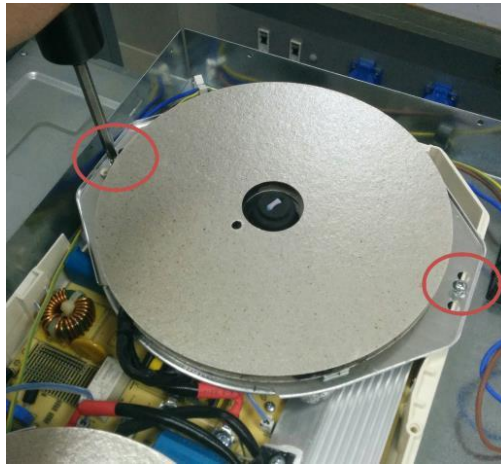
**Inside of Induction Hob**

## HOBS SERVICE MANUAL

---

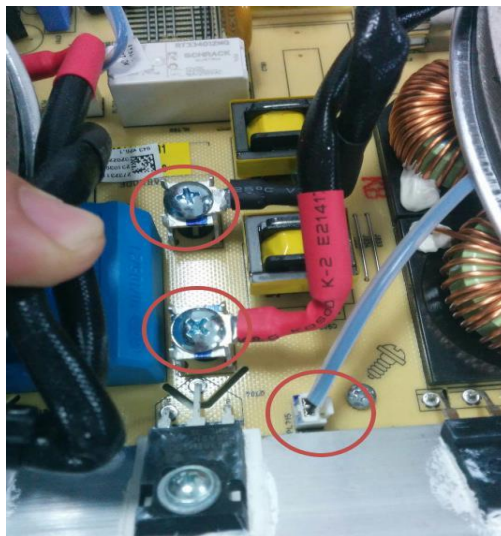
### Changing Heating Element ( IHE ) & Touch Control Unit

Unscrew holder screws of IHE:



Pull off terminal connections on the heating element.

Remove heating element and change with another one if necessary.



To change the touch control unit: remove connected wirings.

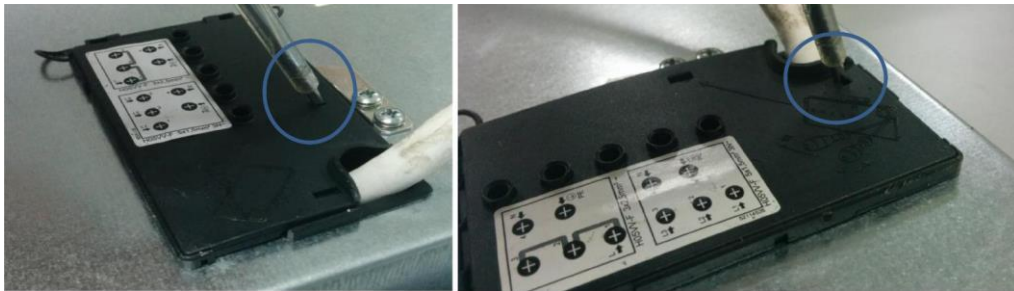


**Terminal Connection**

There is a circuit diagram on terminal box.



Press on the hooks of connection unit for opening terminal box.



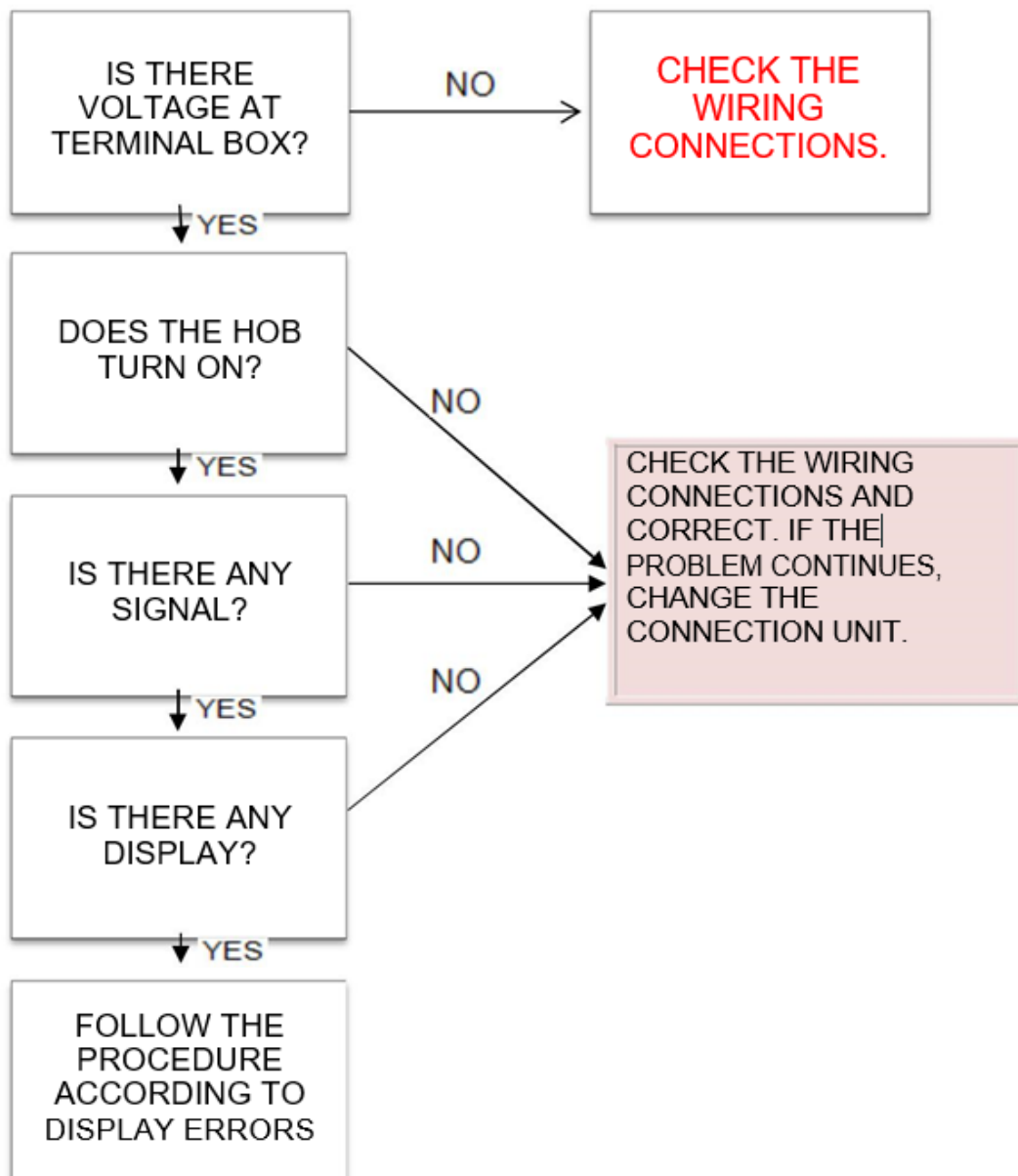
Check wiring or change according to sticker on terminal box

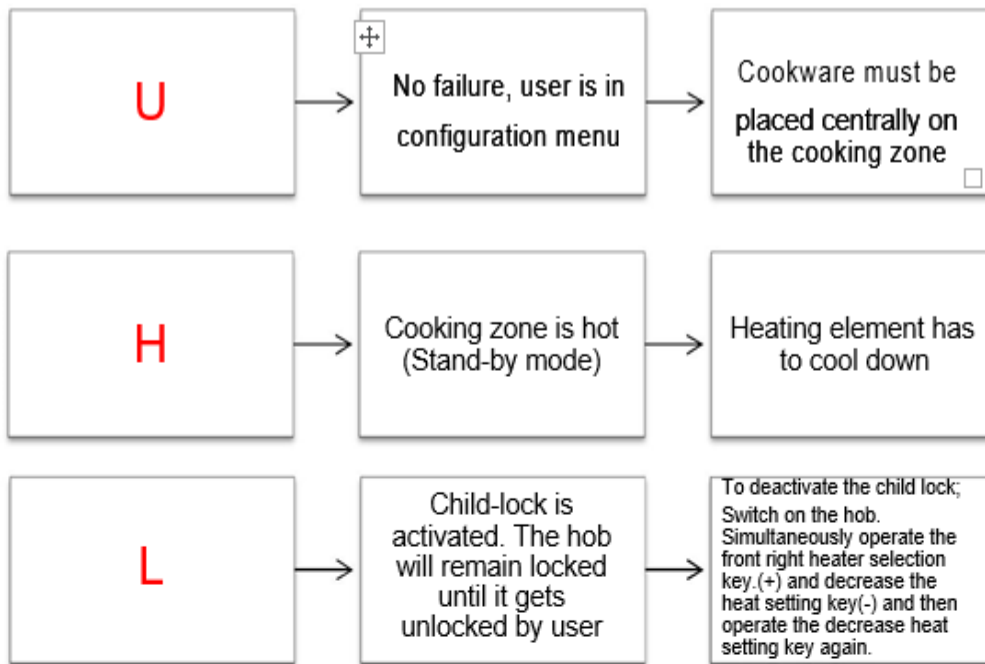


P.S. While reassembling please refer to circuit diagrams

**INDUCTION HOB ERRORS**

**Induction Hob Not Working:**





**Induction Hob Display Errors:**



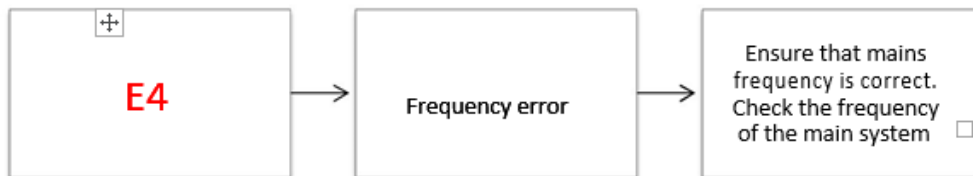
For solving problem, reconnect the cable on below picture.  
While reassembling please refer to circuit diagrams



**E2** Induction coil is too high, switch the hob off by pressing on/off button and let the coil cool down



That could be fixed by turn off hob. If problem continue ,please check electric distribution network.



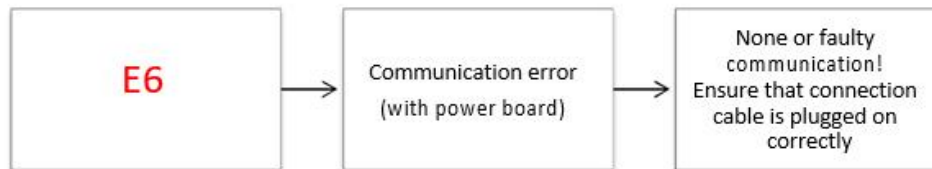
E4 error is shown when hob frequency is different from mains frequency. You could check inductors to know 50 Hz or 60 Hz. If there isnt any difference between mains and hob, turn off it and start again.



NTC is warmed too high, turn off the hob and wait for cooling. If NTC is warming on seconds, it is a fabrication error and change the inductor which is broken one.

## HOBS SERVICE MANUAL

---



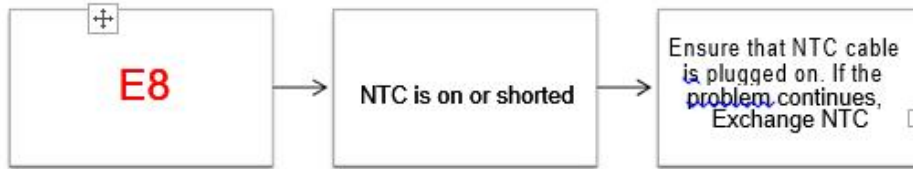
This error is about connection between NTC and control panel. Check below cables. If there any shortcircuit, change the inductor.



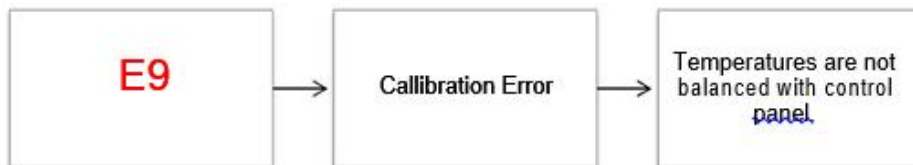
E7 error is showed when coil temperature could not be measured. Check the cable and plug in.



**HOBS SERVICE MANUAL**



This error is about cooling sensor. Check the cable and plug in.



Error code	Cause	Solution
C1--C8	Control Error	C error occurs during the update of the software. It is updated itself periodically to get Class B certification. Please replace the TC board for the solution. Before replacing the TC board, please unplug the hob from the main or turn off and on the main switch. If the error dissappears you don't need to replace the TC board.