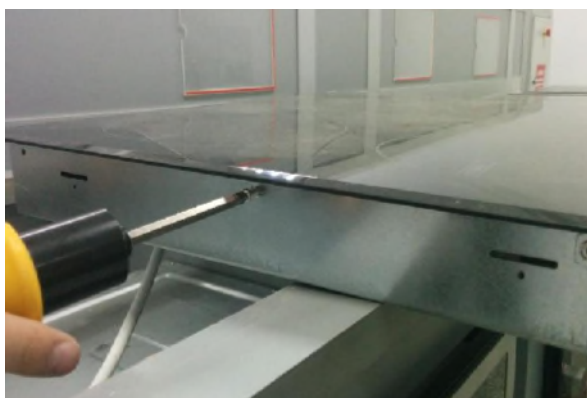
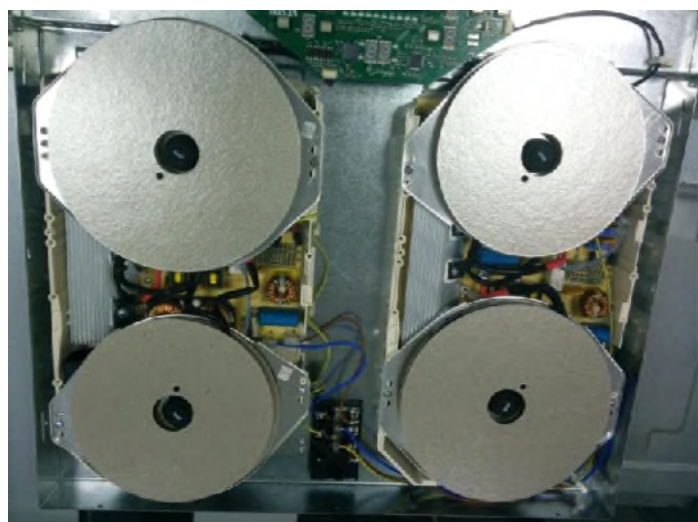


Disassemble The Induction Hob

Unscrew all surrounding screws of the hob.



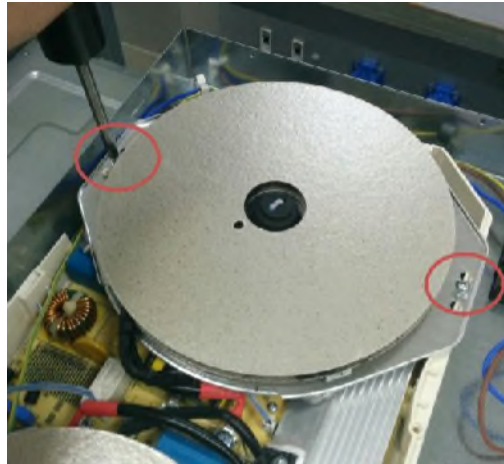
Inside of Induction Hob



HOBS SERVICE MANUAL

Changing Heating Element (IHE) & Touch Control Unit

Unscrew holder screws of IHE:



Pull off terminal connections on the heating element.

Remove heating element and change with another one if necessary.



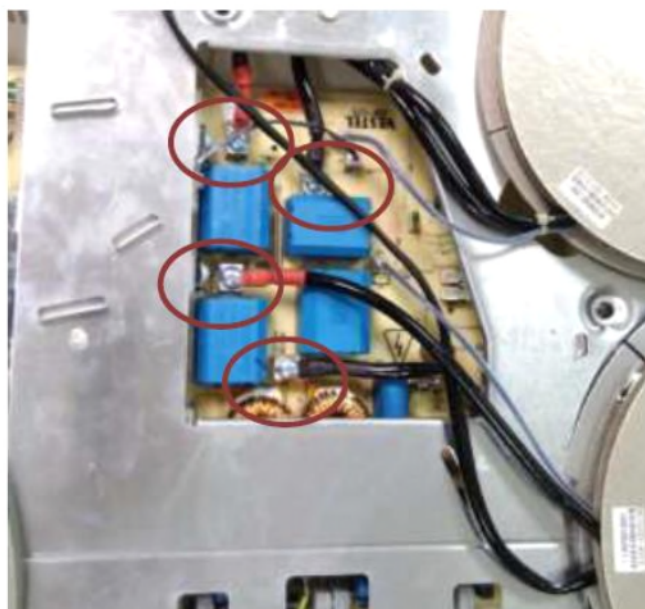
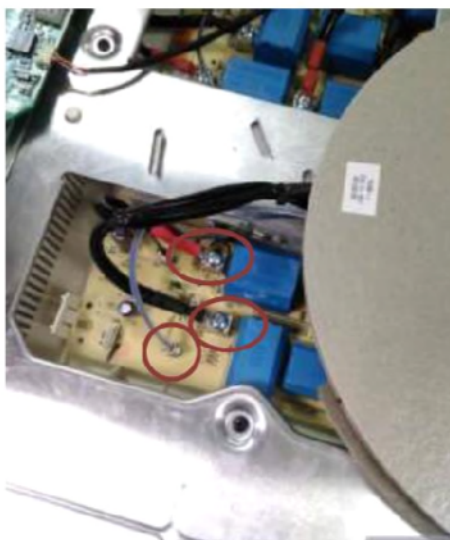
To change the touch control unit: remove connected wirings.



Changing Heating Element (Serie 2)

Changing Heating Element (IHE)

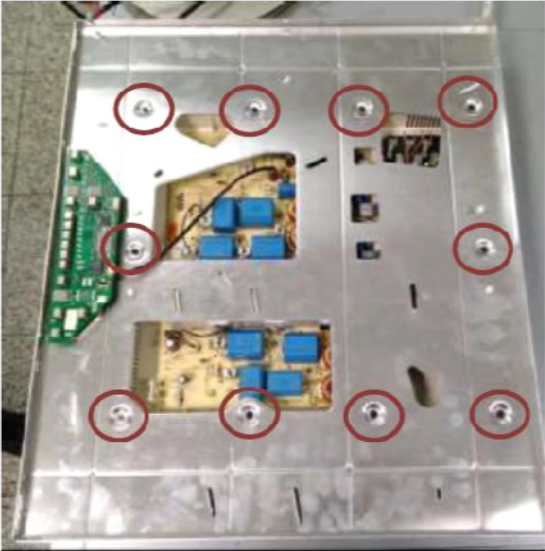
Pull off terminal connections on the heating element (IHE)
Remove heating element and change with another if necessary



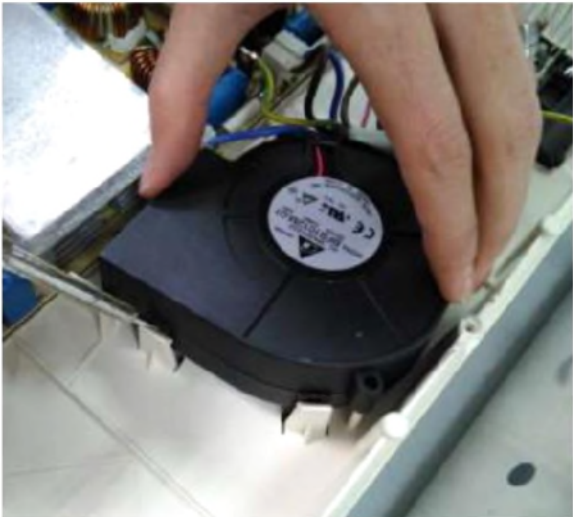
Changing Cooling Fan and Mainboard (Serie 2)

Changing Cooling Fan and Mainboard

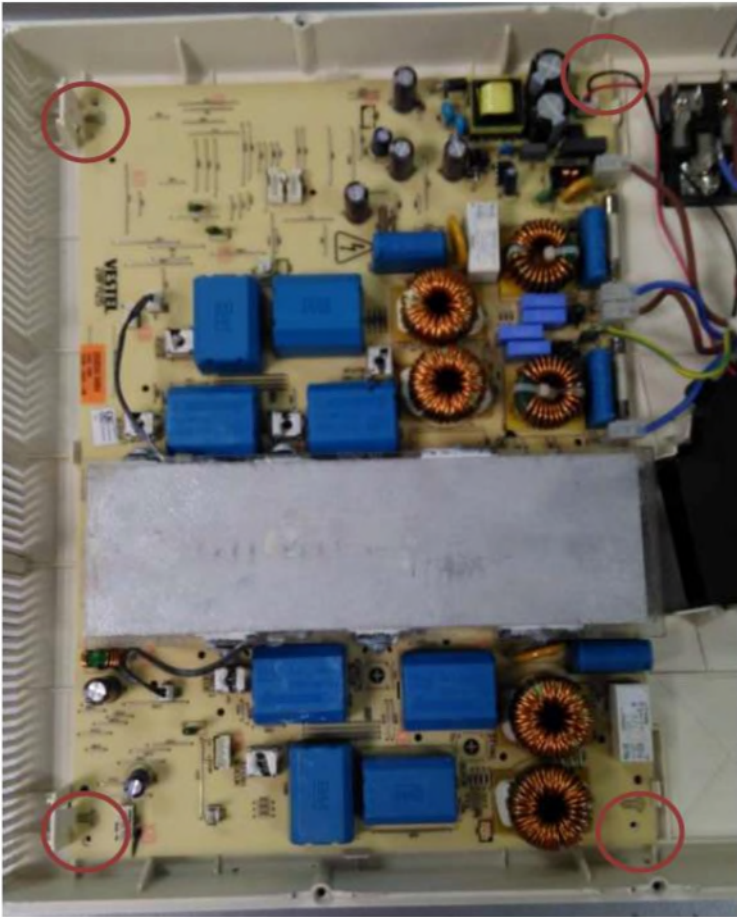
Unscrew all screws which are shown with circles



Free the cooling fan by using a tool from clips.



Unscrew all screws which are shown with circles to change mainboard.

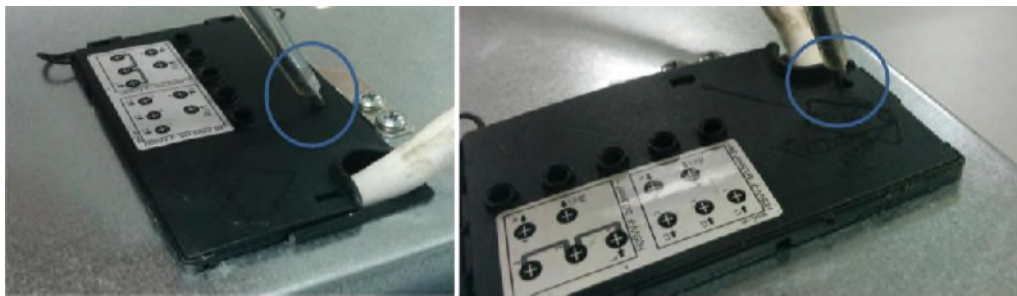


Terminal Connection

There is a circuit diagram on terminal box.



Press on the hooks of connection unit for opening terminal box.



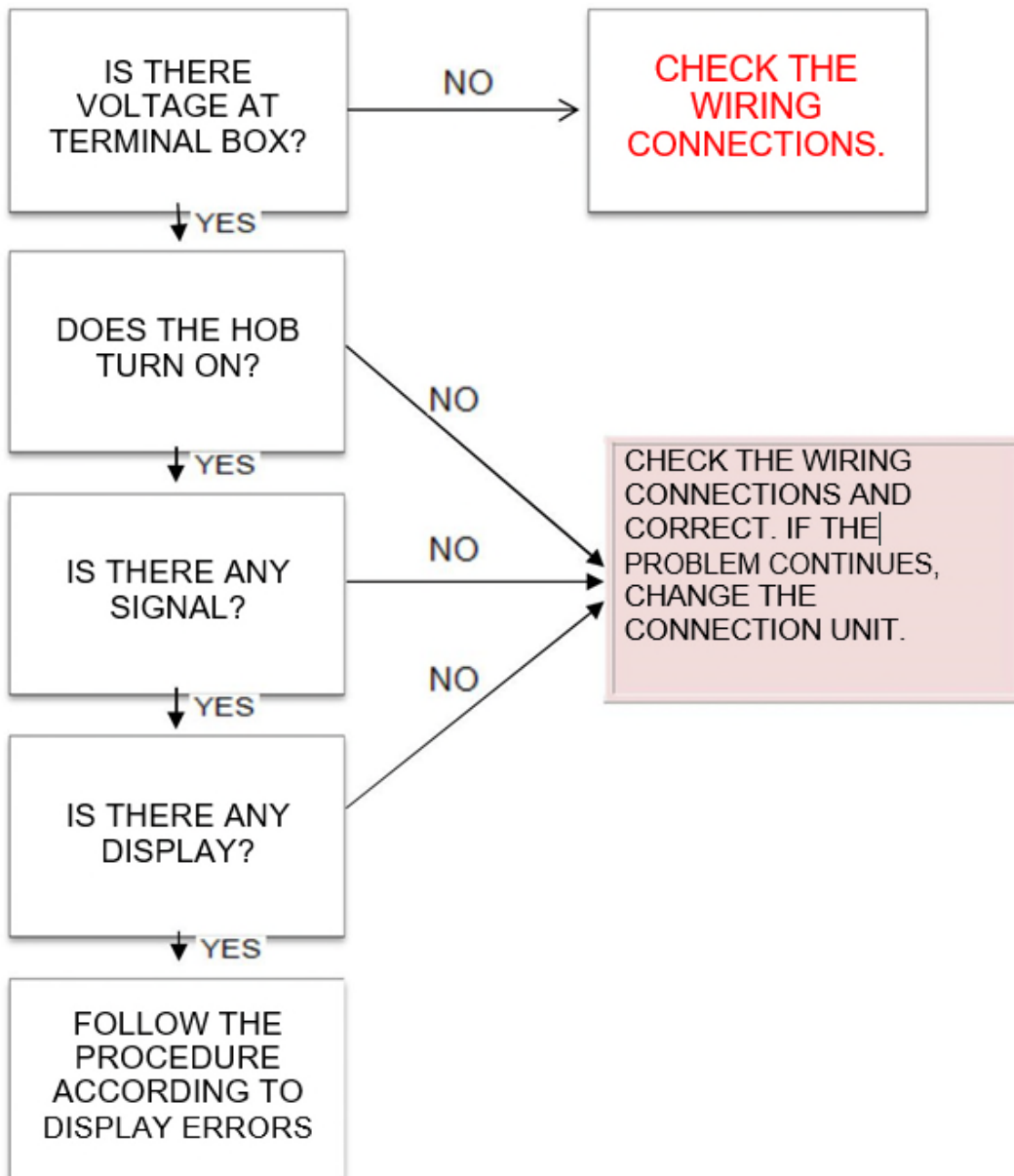
Check wiring or change according to sticker on terminal box

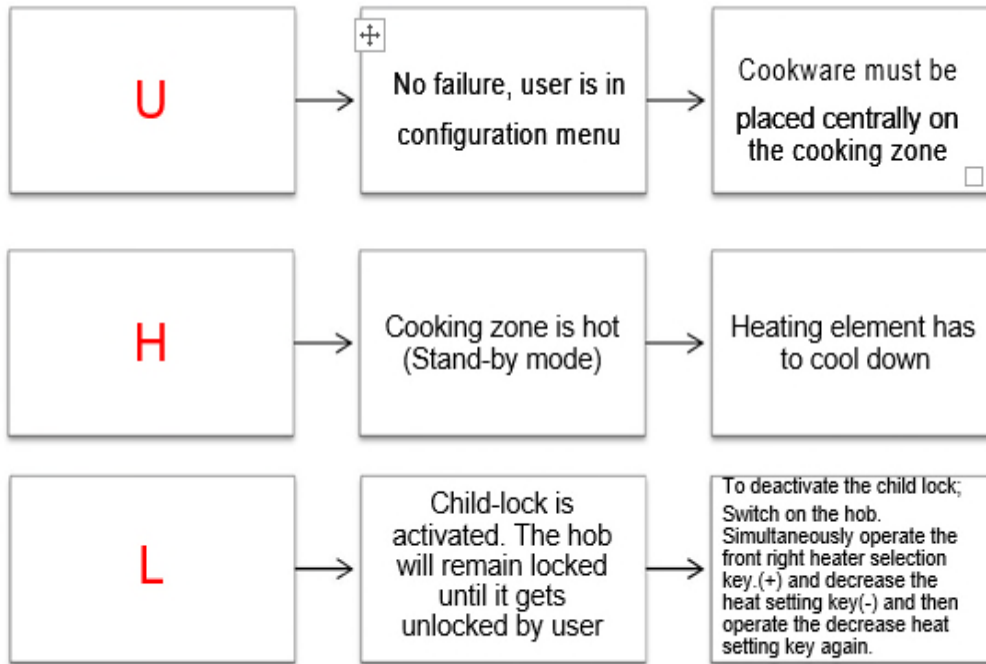


P.S. While reassembling please refer to circuit diagrams

INDUCTION HOB ERRORS

Induction Hob Not Working:





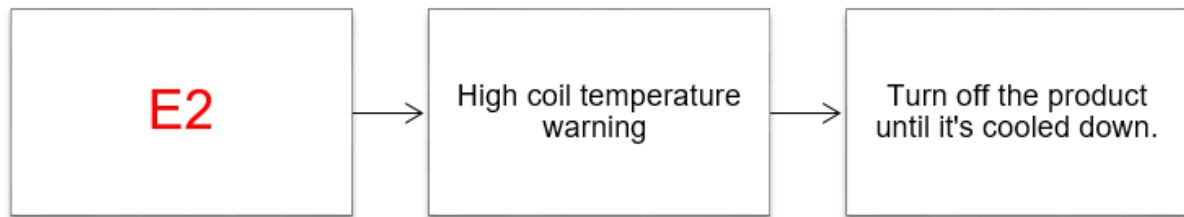
Induction Hob Display Errors:



For solving problem, reconnect the cable on below picture.
While reassembling please refer to circuit diagrams



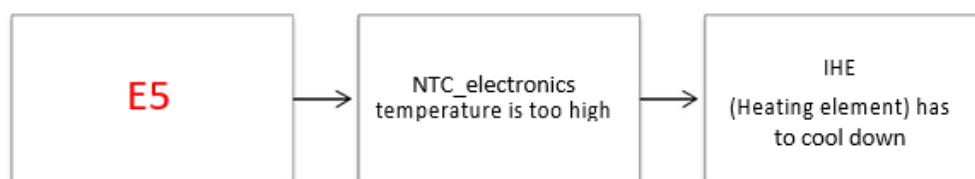
HOBS SERVICE MANUAL



That could be fixed by turn off hob. If problem continue ,please check electric distribution network.

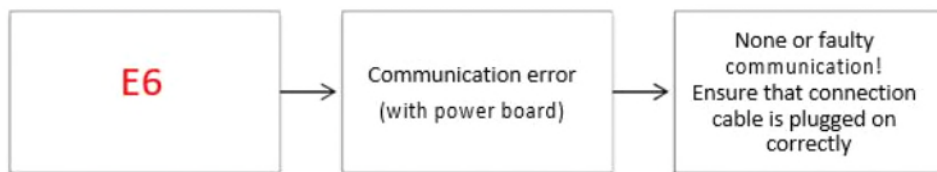


E4 error is shown when hob frequency is different from mains frequency. You could check inductors to know 50 Hz or 60 Hz. If there isnt any difference between mains and hob, turn off it and start again.

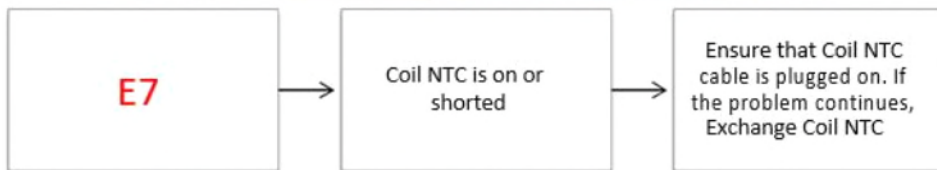
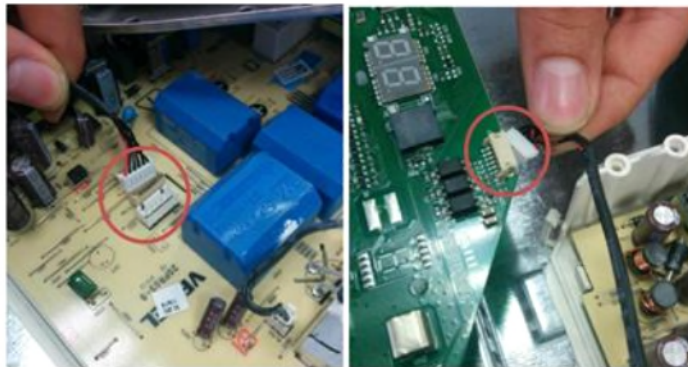


NTC is warmed too high, turn off the hob and wait for cooling. If NTC is warming on seconds, it is a fabrication error and change the inductor which is broken one.

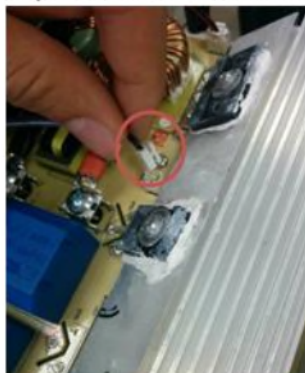
HOBS SERVICE MANUAL



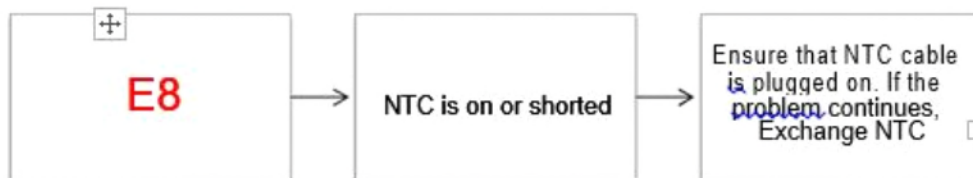
This error is about connection between NTC and control panel. Check below cables. If there any shortcircuit, change the inductor.



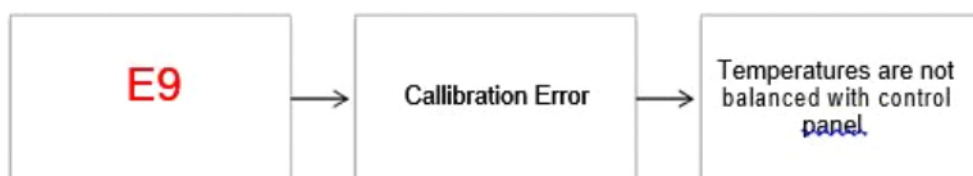
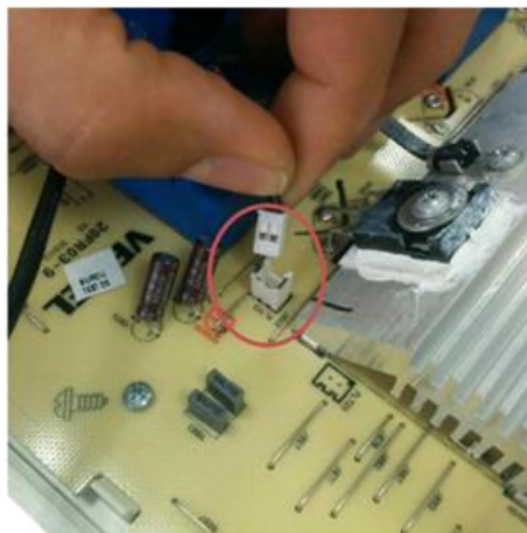
E7 error is showed when coil temperature could not be measured. Check the cable and plug in.



HOBS SERVICE MANUAL

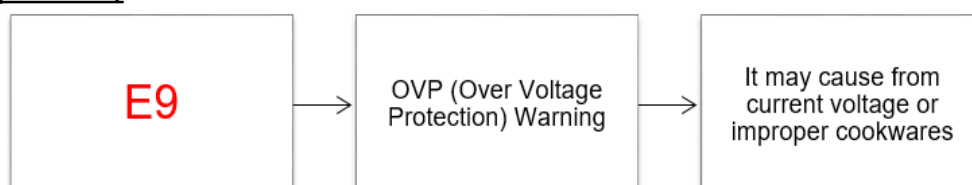


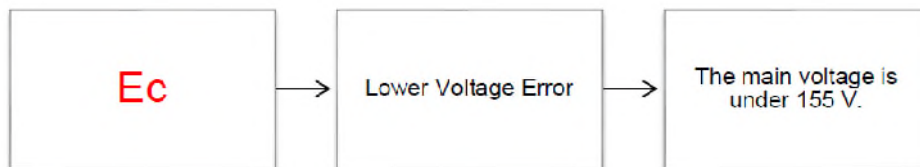
This error is about cooling sensor. Check the cable and plug in.



Error code	Cause	Solution
C1- -C8	Control Error	C error occurs during the update of the software. It is updated itself periodically to get Class B certification. Please replace the TC board for the solution. Before replacing the TC board, please unplug the hob from the main or turn off and on the main switch. If the error disappears you don't need to replace the TC board.

For Serie 2 products;





This error is related with low main voltage. After lower voltage issue solved, E_c continues to show during 20 seconds.

Induction Hob Display Safety Information/Warning:



To prevent the control from unwanted, random sensor operations, a sensor monitoring is included. In case of one or more sensors are operated longer than 12sec, the sensor monitoring routine detects and indicates acoustically and visibly that wrong operation (pot or other object placed on the sensor, water spilled, sensor failure, etc.) and cuts off the normal operation of the control.

Cooktop control is switched to the S-Mode even if key lock is active by disabling all heaters. "F" will flash in all heater displays and acoustically buzzer warning will be heard until removing the pot or object that placed on the sensor(s). etc.